

Nur für Forschungszwecke

UBE2I-Specific Monoklonaler Antikörper

Katalog-Nr.:67660-1-Ig



Allgemeine Informationen

Katalog-Nr.: 67660-1-Ig	GenBank-Zugangsnummer: NM_003345	Reinigungsmethode: Protein-G-Reinigung
Größe: 150ul , Konzentration: 1900 µg/ml von7329 Nanodrop und 1000 µg/ml durch die Bradford-Methode mit BSA als Standard;	GeneID (NCBI): 150000	CloneNo.: 1G8A2
Wirt: Maus	Vollständiger Name: ubiquitin-conjugating enzyme E2I (UBC9 homolog, yeast)	Empfohlene Verdünnungen: WB 1:5000-1:50000
Isotyp: IgG1	Berechnete Masse: 18 kDa	
	Beobachtete Masse: 18 kDa	

Anwendungen

Geprüfte Anwendungen: WB,ELISA	Positivkontrollen: WB : A549-Zellen, HEK-293-Zellen, HeLa-Zellen, HepG2-Zellen, Jurkat-Zellen, NIH/3T3-Zellen
Getestete Reaktivität: Human, Maus, Ratte	

Hintergrundinformationen

UBC9 is also named as UBE2I, UBCE9 and belongs to the ubiquitin-conjugating enzyme family. It is a homologue of the E2 ubiquitin conjugating enzyme and participates in the covalent linking of SUMO-1 molecule to the target protein. This protein is present at a high level in spleen and lung. Moderate level of UBC9 is detected in kidney and liver. Low amount of UBC9 is observed in brain, whereas the 18 kDa band of UBC9 is barely visible or absent in heart and skeletal muscle. In heart and muscle extracts the UBC9 antibodies recognizes a 38 kDa protein band, but this band is not visible in extracts of other rat tissues(PMID:14739995).

Lagerung

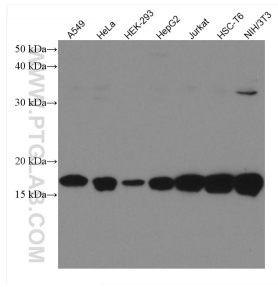
Lagerungsbedingungen:
Bei -20°C lagern.
Lagerungspuffer:
PBS mit 0.02% Natriumazid und 50% Glycerin pH 7.3.
Aliquotieren ist nicht notwendig bei -20°C Lagerung

***** 20ul-Größen enthalten 0.1% BSA**

For technical support and original validation data for this product please contact:
T: 1 (888) 4PTGLAB (1-888-478-4522) (toll free in USA), or 1(312) 455-8498 (outside USA)
E: proteintech@ptglab.com
W: ptglab.com

This product is exclusively available under Proteintech Group brand and is not available to purchase from any other manufacturer.

Ausgewählte Validierungsdaten



Various lysates were subjected to SDS PAGE followed by western blot with 67660-1-Ig (UBE21-Specific antibody) at dilution of 1:10000 incubated at room temperature for 1.5 hours.