

Nur für Forschungszwecke

cyclin B1 Monoklonaler Antikörper

Katalog-Nr.:67686-1-Ig

Vorgestelltes Produkt

9 Publikationen



Allgemeine Informationen

Katalog-Nr.: 67686-1-Ig	GenBank-Zugangsnummer: BC006510	Reinigungsmethode: Protein-A-Reinigung
Größe: 150ul , Konzentration: 1000 µg/ml von891 Nanodrop und 403 µg/ml durch die Bradford-Methode mit BSA als Standard;	GeneID (NCBI): 1F3G11	CloneNo.: 1F3G11
Wirt: Maus	Vollständiger Name: cyclin B1	Empfohlene Verdünnungen: WB 1:2000-1:10000 IHC 1:1000-1:4000 IF 1:400-1:1600
Isotyp: IgG1	Berechnete Masse: 48 kDa	
Immunogen Katalognummer: AG29444	Beobachtete Masse: 55 kDa	

Anwendungen

Geprüfte Anwendungen: FC, IF, IHC, WB, ELISA	Positivkontrollen: WB : A549-Zellen, HEK-293-Zellen, HeLa-Zellen, Jurkat-Zellen, K-562-Zellen, NIH/3T3-Zellen
In Publikationen genannte Anwendungen: WB	IHC : humanes Tonsillitisgewebe,
Getestete Reaktivität: Human, Maus, Ratte	IF : HeLa-Zellen, HT-29-Zellen
Zitierte Arten: Human	

Hinweis-IHC: Antigenmaskierung mit TE-Puffer pH 9,0 empfohlen. (*) Wahlweise kann die Antigenmaskierung auch mit Citratpuffer pH 6,0 erfolgen.

Hintergrundinformationen

Cyclin B1 is a regulatory protein involved in mitosis. The gene product complexes with p34(cdc2) to form the maturation-promoting factor (MPF). Two alternative transcripts have been found, a constitutively expressed transcript and a cell cycle-regulated transcript, that is expressed predominantly during G2/M phase of the cell cycle. The different transcripts result from the use of alternate transcription initiation sites. The antibody is specific to CCNB1. We got a 55-60 kDa band in western blotting maybe due to phosphorylation.

Bemerkenswerte Veröffentlichungen

Verfasser	Pubmed ID	Journal	Anwendung
Li Zhu	34631884	Biomed Res Int	WB
Tsung-Teng Huang	36499211	Int J Mol Sci	WB
Silu Hou	36427601	Food Chem Toxicol	WB

Lagerung

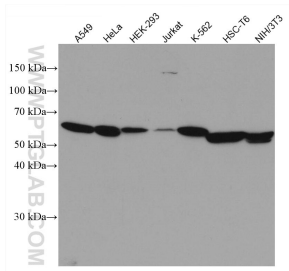
Lagerungsbedingungen:
Bei -20°C lagern. Nach dem Versand ein Jahr lang stabil
Lagerungspuffer:
PBS mit 0.02% Natriumazid und 50% Glycerin pH 7.3.
Aliquotieren ist nicht notwendig bei -20°C Lagerung

*** 20ul-Größen enthalten 0.1% BSA

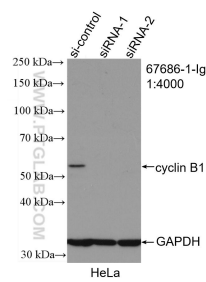
For technical support and original validation data for this product please contact:
T: 1 (888) 4PTGLAB (1-888-478-4522) (toll free in USA), or 1(312) 455-8498 (outside USA)
E: proteintech@ptglab.com
W: ptglab.com

This product is exclusively available under Proteintech Group brand and is not available to purchase from any other manufacturer.

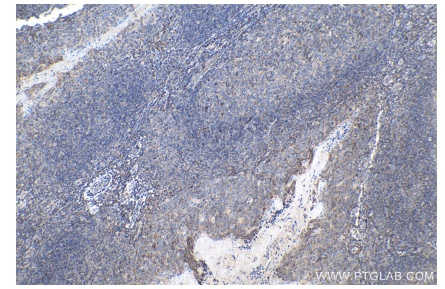
Ausgewählte Validierungsdaten



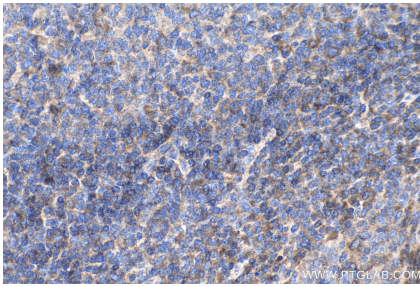
Various lysates were subjected to SDS PAGE followed by western blot with 67686-1-Ig (cyclin B1 antibody) at dilution of 1:4000 incubated at room temperature for 1.5 hours.



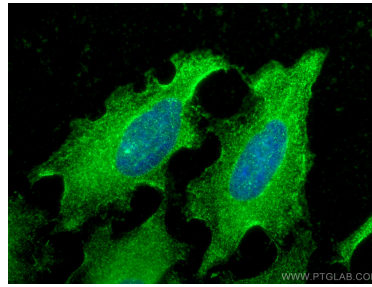
WB result of cyclin B1 antibody (67686-1-Ig; 1:3200; incubated at room temperature for 1.5 hours) with sh-Control and sh-cyclin B1 transfected HeLa cells.



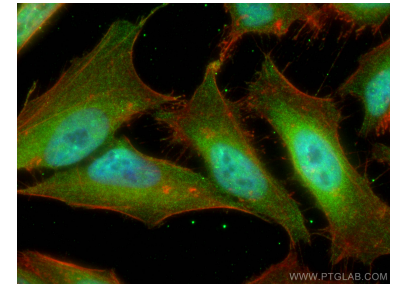
Immunohistochemical analysis of paraffin-embedded human tonsillitis tissue slide using 67686-1-Ig (cyclin B1 antibody) at dilution of 1:1600 (under 10x lens). Heat mediated antigen retrieval with Tris-EDTA buffer (pH 9.0).



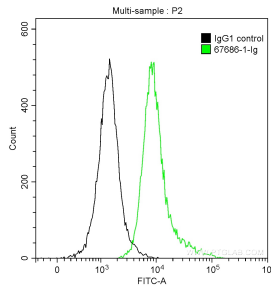
Immunohistochemical analysis of paraffin-embedded human tonsillitis tissue slide using 67686-1-Ig (cyclin B1 antibody) at dilution of 1:1600 (under 40x lens). Heat mediated antigen retrieval with Tris-EDTA buffer (pH 9.0).



Immunofluorescent analysis of (-20°C Ethanol) fixed HeLa cells using cyclin B1 antibody (67686-1-Ig, Clone: 1F3G11) at dilution of 1:300 and CoralLite@488-Conjugated AffiniPure Goat Anti-Mouse IgG(H+L).



Immunofluorescent analysis of (4% PFA) fixed HeLa cells using cyclin B1 antibody (67686-1-Ig, Clone: 1F3G11) at dilution of 1:650 and CoralLite@488-Conjugated AffiniPure Goat Anti-Mouse IgG(H+L), CL594-Phalloidin (red).



1×10^6 Jurkat cells were intracellularly stained with 0.2 ug Anti-Human cyclin B1 (67686-1-Ig, Clone:1F3G11) and CoralLite@488-Conjugated AffiniPure Goat Anti-Mouse IgG(H+L) at dilution 1:1000 (green), or 0.2 ug Mouse IgG1 Isotype Control (66360-1-Ig, Clone: T1F8D3F10) (black). Cells were fixed with 90% MeOH.