

Nur für Forschungszwecke

ASL Monoklonaler Antikörper

Katalog-Nr.:67692-1-Ig



Allgemeine Informationen

Katalog-Nr.: 67692-1-Ig	GenBank-Zugangsnummer: BC008195	Reinigungsmethode: Protein-A-Reinigung
Größe: 150ul , Konzentration: 1000 µg/ml von435 Nanodrop und 500 µg/ml durch die Bradford-Methode mit BSA als Standard;	GeneID (NCBI): Vollständiger Name: argininosuccinate lyase	CloneNo.: 1G9H3
Wirt: Maus	Berechnete Masse: 55 kDa	Empfohlene Verdünnungen: WB 1:5000-1:50000
Isotyp: IgG2b	Beobachtete Masse: 50 kDa	
Immunogen Katalognummer: AG30517		

Anwendungen

Geprüfte Anwendungen: WB,ELISA	Positivkontrollen: WB : Hausschwein-Nierengewebe, Hausschwein- Lebergewebe, K-562-Zellen, LNCaP-Zellen, Mauslebergewebe, Mausnierengewebe, Rattenlebergewebe, Rattennierengewebe
Getestete Reaktivität: Hausschwein, Human, Maus, Ratte	

Hintergrundinformationen

Argininosuccinate lyase (ASL), one of the significant UC enzymes, catalyzes argininosuccinate cleavage to generate arginine and fumarate. Arginine is then catalyzed by arginase to ornithine and polyamines, which are found to promote cancer cell proliferation and growth. Importantly, ASL ectopic expression is closely associated with poor prognosis of colorectal cancer, hepatocellular. ASL is a member of the aspartase/fumarase superfamily. Enzymes of this superfamily share similar tetrameric structure and active site, though the sequence identities between different members are quite low (less than 20%). Members of this superfamily have been recognised as drug targets for microbial infections. ASL is a 464-amino-acid enzyme with a molecular mass of 49.7 kDa. (PMID: 22386318 PMID: 31018905)

Lagerung

Lagerungsbedingungen:
Bei -20°C lagern.
Lagerungspuffer:
PBS mit 0.02% Natriumazid und 50% Glycerin pH 7.3.
Aliquotieren ist nicht notwendig bei -20°C Lagerung

***** 20ul-Größen enthalten 0.1% BSA**

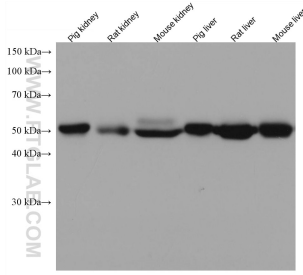
For technical support and original validation data for this product please contact:

T: 1 (888) 4PTGLAB (1-888-478-4522) (toll free
in USA), or 1(312) 455-8498 (outside USA)

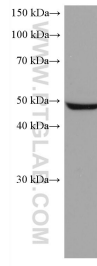
E: proteintech@ptglab.com
W: ptglab.com

This product is exclusively available under Proteintech Group brand and is not available to purchase from any other manufacturer.

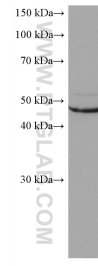
Ausgewählte Validierungsdaten



Various lysates were subjected to SDS PAGE followed by western blot with 67692-1-Ig (ASL antibody) at dilution of 1:20000 incubated at room temperature for 1.5 hours.



LNCaP cells were subjected to SDS PAGE followed by western blot with 67692-1-Ig (ASL antibody) at dilution of 1:20000 incubated at room temperature for 1.5 hours.



K-562 cells were subjected to SDS PAGE followed by western blot with 67692-1-Ig (ASL antibody) at dilution of 1:20000 incubated at room temperature for 1.5 hours.