

## Allgemeine Informationen

<b>Katalog-Nr.:</b> 67698-1-Ig	<b>GenBank-Zugangsnummer:</b> BC003623	<b>Reinigungsmethode:</b> Caprylsäure/Ammoniumsulfat-Präzipitation
<b>Größe:</b> 150ul , Konzentration: 700 µg/ml von Nanodrop und 500 µg/ml durch die Bradford-Methode mit BSA als Standard;	<b>GeneID (NCBI):</b> 7534	<b>CloneNo.:</b> 3G12B10
<b>Wirt:</b> Maus	<b>Vollständiger Name:</b> tyrosine 3-monooxygenase/tryptophan 5-monooxygenase activation protein, zeta polypeptide	<b>Empfohlene Verdünnungen:</b> WB 1:5000-1:50000 IHC 1:200-1:800
<b>Isotyp:</b> IgM	<b>Berechnete Masse:</b> 28 kDa	
<b>Immunogen Katalognummer:</b> AG6667	<b>Beobachtete Masse:</b> 28-30 kDa	

## Anwendungen

### Geprüfte Anwendungen:

IHC, WB, ELISA

### Getestete Reaktivität:

Human, Maus, Ratte

**Hinweis-IHC: Antigendemaskierung mit TE-Puffer pH 9,0 empfohlen. (\*) Wahlweise kann die Antigendemaskierung auch mit Citratpuffer pH 6,0 erfolgen.**

### Positivkontrollen:

**WB** : A549-Zellen, HEK-293-Zellen, HeLa-Zellen, Jurkat-Zellen, K-562-Zellen, NIH3T3-Zellen, PC-12-Zellen, RAW 264.7-Zellen

**IHC** : humanes Lungenkarzinomgewebe, humanes Leberkarzinomgewebe

## Hintergrundinformationen

YWHAZ (also known as 14-3-3 zeta) is a member of 14-3-3 proteins which were the first phosphoserine/phosphothreonine-binding proteins to be discovered. 14-3-3 family members interact with a wide spectrum of proteins and possess diverse functions. Mammals express seven distinct 14-3-3 isoforms (gamma, epsilon, beta, zeta, sigma, theta, tau) that form multiple homo- and hetero- dimers. 14-3-3 proteins display the highest expression levels in the brain, and have been implicated in several neurodegenerative diseases, including Alzheimer's disease and amyotrophic lateral sclerosis.

## Lagerung

### Lagerungsbedingungen:

Bei -20°C lagern.

### Lagerungspuffer:

PBS mit 0.02% Natriumazid und 50% Glycerin pH 7.3.

Aliquotieren ist nicht notwendig bei -20°C Lagerung

**\*\*\* 20ul-Größen enthalten 0.1% BSA**

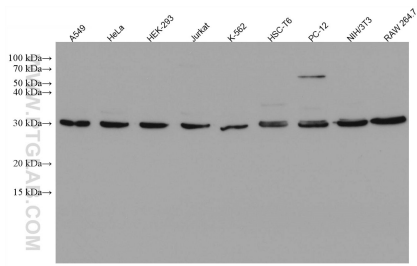
For technical support and original validation data for this product please contact:

T: 1 (888) 4PTGLAB (1-888-478-4522) (toll free in USA), or 1(312) 455-8498 (outside USA)

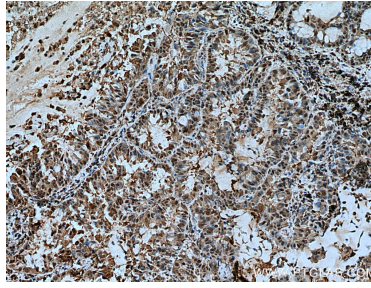
E: [proteintech@ptglab.com](mailto:proteintech@ptglab.com)  
W: [ptglab.com](http://ptglab.com)

**This product is exclusively available under Proteintech Group brand and is not available to purchase from any other manufacturer.**

## Ausgewählte Validierungsdaten



Various lysates were subjected to SDS PAGE followed by western blot with 67698-1-Ig (YWHAZ antibody) at dilution of 1:50000 incubated at room temperature for 1.5 hours.



Immunohistochemical analysis of paraffin-embedded human lung cancer tissue slide using 67698-1-Ig (YWHAZ antibody) at dilution of 1:400 (under 10x lens). Heat mediated antigen retrieval with Tris-EDTA buffer (pH 9.0).