

Nur für Forschungszwecke

# PPT1 Monoklonaler Antikörper

Katalog-Nr.:67699-1-Ig

Vorgestelltes Produkt



## Allgemeine Informationen

**Katalog-Nr.:**

67699-1-Ig

**GenBank-Zugangsnummer:**

BC008426

**Reinigungsmethode:**

Protein-A-Reinigung

**Größe:**

150ul , Konzentration: 1000 µg/ml von5538

**GeneID (NCBI):**

1A1A3

**CloneNo.:**

1A1A3

Nanodrop und 500 µg/ml durch die Bradford-Methode mit BSA als Standard;

**Vollständiger Name:**

palmitoyl-protein thioesterase 1

**Empfohlene Verdünnungen:**

WB 1:2000-1:10000

**Wirt:**

Maus

**Berechnete Masse:**

34 kDa

**Beobachtete Masse:**

32-34 kDa

**Isotyp:**

IgG2a

**Immunogen Katalognummer:**

AG30550

## Anwendungen

**Geprüfte Anwendungen:**

WB, ELISA

**Positivkontrollen:**

WB : A549-Zellen, Hausschwein-Cerebellum-Gewebe, Hausschwein-Herzgewebe, Hausschwein-Hirngewebe, HeLa-Zellen, Jurkat-Zellen, K-562-Zellen, Kaninchen-Cerebellum-Gewebe, Kaninchenhirngewebe, LNCaP-Zellen

**Getestete Reaktivität:**

Hausschwein, Human, Kaninchen

## Hintergrundinformationen

The defective gene behind the INCL (infantile neuronal ceroid lipofuscinoses) disease, CLN1, encodes for palmitoyl protein thioesterase 1 (PPT1). It consists of 306 amino acids, including a signal sequence of 26 amino acids and three N-linked glycosylation sites. This protein exists with a molecular mass of 32 kDa, 34 kDa, 36 kDa, and 38 kDa. The enzyme is transported into lysosomes of non-neuronal cells by the mannose 6-phosphate receptor (M6PR) mediated pathway and a significant amount of native PPT1 resides in a complex rather than in a monomeric form (PMID:17565660).

## Lagerung

**Lagerungsbedingungen:**

Bei -20°C lagern. Nach dem Versand ein Jahr lang stabil

**Lagerungspuffer:**

PBS mit 0.02% Natriumazid und 50% Glycerin pH 7.3.

Aliquotieren ist nicht notwendig bei -20°C Lagerung

\*\*\* 20ul-Größen enthalten 0.1% BSA

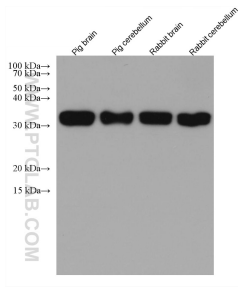
For technical support and original validation data for this product please contact:

T: 1 (888) 4PTGLAB (1-888-478-4522) (toll free in USA), or 1(312) 455-8498 (outside USA)

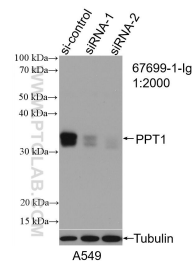
E: proteintech@ptglab.com  
W: ptglab.com

This product is exclusively available under Proteintech Group brand and is not available to purchase from any other manufacturer.

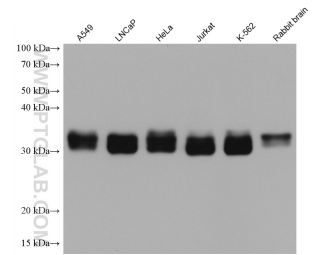
## Ausgewählte Validierungsdaten



Various lysates were subjected to SDS PAGE followed by western blot with 67699-1-Ig (PPT1 antibody) at dilution of 1:5000 incubated at room temperature for 1.5 hours.



WB result of PPT1 antibody (67699-1-Ig; 1:2000; incubated at room temperature for 1.5 hours) with sh-Control and sh-PPT1 transfected A549 cells.



Various lysates were subjected to SDS PAGE followed by western blot with 67699-1-Ig (PPT1 antibody) at dilution of 1:5000 incubated at room temperature for 1.5 hours.