

Allgemeine Informationen

Katalog-Nr.:

67702-1-Ig

GenBank-Zugangsnummer:

BC018696

Reinigungsmethode:

Protein-G-Reinigung

Größe:

150ul, Konzentration: 1100 µg/ml von1738

GeneID (NCBI):

2E7G5

CloneNo.:

2E7G5

Nanodrop und 500 µg/ml durch die Bradford-Methode mit BSA als Standard;

Vollständiger Name:

dihydrolipoamide dehydrogenase

Empfohlene Verdünnungen:

WB 1:2000-1:10000

IHC 1:250-1:1000

Wirt:

Maus

Berechnete Masse:

509 aa, 54 kDa

Beobachtete Masse:

54 kDa

Isotyp:

IgG1

Immunogen Katalognummer:

AG9680

Anwendungen

Geprüfte Anwendungen:

IHC, WB, ELISA

Positivkontrollen:

WB : HuH-7-Zellen, HeLa-Zellen, HepG2-Zellen, Jurkat-Zellen, L02-Zellen, NIH/3T3-Zellen

Getestete Reaktivität:

Human, Maus, Ratte

IHC : humanes Leberkarzinomgewebe,

Hinweis-IHC: Antigenmaskierung mit TE-Puffer pH 9,0 empfohlen. (*) Wahlweise kann die Antigenmaskierung auch mit Citratpuffer pH 6,0 erfolgen.

Hintergrundinformationen

DLD(Dihydrolipoamide dehydrogenase, mitochondrial) is also named as GCSL, LAD, PHE3 and belongs to the class-I pyridine nucleotide-disulfide oxidoreductase family. It catalyzes the oxidation of dihydrolipoamide, hE3 uses two molecules : non-covalently bound FAD and a transiently bound substrate, NAD+. DLD is involved in the hyperactivation of spermatazoa during capacitation and in the spermatazoal acrosome reaction.

Lagerung

Lagerungsbedingungen:

Bei -20°C lagern.

Lagerungspuffer:

PBS mit 0.02% Natriumazid und 50% Glycerin pH 7.3.

Aliquotieren ist nicht notwendig bei -20°C Lagerung

*** 20ul-Größen enthalten 0.1% BSA

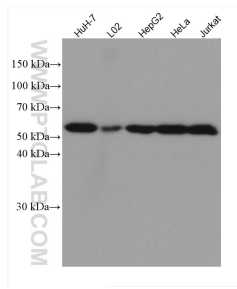
For technical support and original validation data for this product please contact:

T: 1 (888) 4PTGLAB (1-888-478-4522) (toll free in USA), or 1(312) 455-8498 (outside USA)

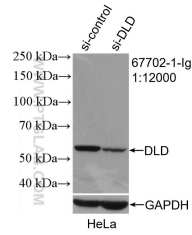
E: proteintech@ptglab.com
W: ptglab.com

This product is exclusively available under Proteintech Group brand and is not available to purchase from any other manufacturer.

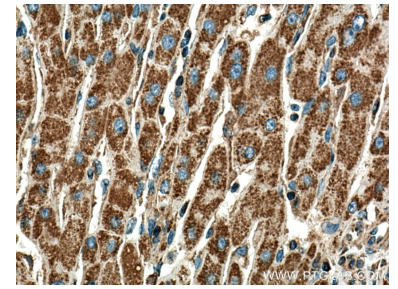
Ausgewählte Validierungsdaten



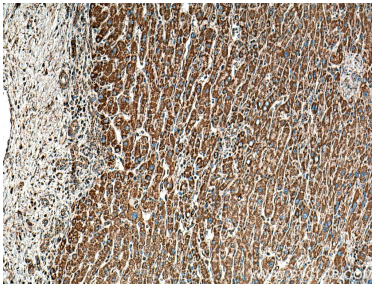
Various lysates were subjected to SDS PAGE followed by western blot with 67702-1-Ig (DLD antibody) at dilution of 1:5000 incubated at room temperature for 1.5 hours.



WB result of DLD antibody (67702-1-Ig; 1:12000; incubated at room temperature for 1.5 hours) with sh-Control and sh-DLD transfected HeLa cells.



Immunohistochemical analysis of paraffin-embedded human liver cancer tissue slide using 67702-1-Ig (DLD antibody) at dilution of 1:500 (under 40x lens). Heat mediated antigen retrieval with Tris-EDTA buffer (pH 9.0).



Immunohistochemical analysis of paraffin-embedded human liver cancer tissue slide using 67702-1-Ig (DLD antibody) at dilution of 1:500 (under 10x lens). Heat mediated antigen retrieval with Tris-EDTA buffer (pH 9.0).