

Allgemeine Informationen

Katalog-Nr.: 67712-1-Ig	GenBank-Zugangsnummer: BC126275	Reinigungsmethode: Protein-A-Reinigung
Größe: 150ul , Konzentration: 500 µg/ml durch die Bradford-Methode mit BSA als Standard;	GeneID (NCBI): 2058	CloneNo.: 1B7G2
Wirt: Maus	Vollständiger Name: glutamyl-prolyl-tRNA synthetase	Empfohlene Verdünnungen: WB 1:5000-1:50000 IHC 1:500-1:2000 IF 1:50-1:500
Isotyp: IgG2a	Berechnete Masse: 1512 aa, 171 kDa	
Immunogen Katalognummer: AG19184	Beobachtete Masse: 171 kDa	

Anwendungen

Geprüfte Anwendungen: IF, IHC, WB, ELISA	Positivkontrollen:
Getestete Reaktivität: Human, Maus, Ratte	WB : HT-29-Zellen, HEK-293-Zellen, HeLa-Zellen, HepG2-Zellen, Jurkat-Zellen, LNCaP-Zellen, NIH/3T3- Zellen, PC-12-Zellen
Hinweis-IHC: Antigendemaskierung mit TE- Puffer pH 9,0 empfohlen. (*) Wahlweise kann die Antigendemaskierung auch mit Citratpuffer pH 6,0 erfolgen.	IHC : humanes Lungenkarzinomgewebe, IF : HeLa-Zellen,

Hintergrundinformationen

Human EPRS is a 172 kDa, 1512 amino acid polypeptide consisting of three major domains. The N and C termini contain ERS and PRS catalytic domains, respectively, joined by a 300 amino acid linker containing three tandem WHEP-TRS (referred to as WHEP) domains. EPRS is a bifunctional aminoacyl-tRNA synthetase that catalyzes the aminoacylation of glutamic acid and proline tRNA species. EPRS has a special role in GAIT-mediated translational control, as it is solely responsible for recognition and interaction with GAIT elements in target mRNAs. (PMID: 29576217, PMID: 22386318, PMID: 19647514)

Lagerung

Lagerungsbedingungen:
Bei -20°C lagern.
Lagerungspuffer:
PBS mit 0.02% Natriumazid und 50% Glycerin pH 7.3.
Aliquotieren ist nicht notwendig bei -20°C Lagerung

*** 20ul-Größen enthalten 0.1% BSA

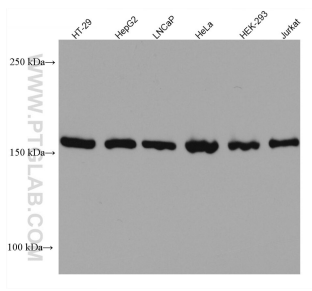
For technical support and original validation data for this product please contact:

T: 1 (888) 4PTGLAB (1-888-478-4522) (toll free
in USA), or 1(312) 455-8498 (outside USA)

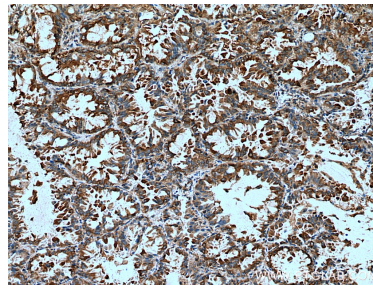
E: proteintech@ptglab.com
W: ptglab.com

This product is exclusively available under Proteintech Group brand and is not available to purchase from any other manufacturer.

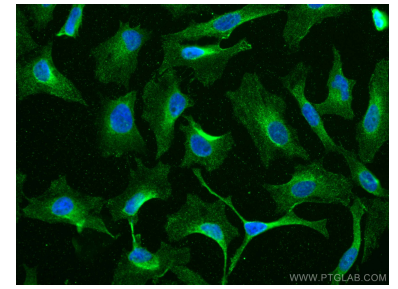
Ausgewählte Validierungsdaten



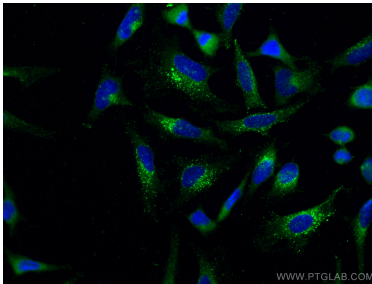
Various lysates were subjected to SDS PAGE followed by western blot with 67712-1-Ig (EPRS antibody) at dilution of 1:20000 incubated at room temperature for 1.5 hours.



Immunohistochemical analysis of paraffin-embedded human lung cancer tissue slide using 67712-1-Ig (EPRS antibody) at dilution of 1:1000 (under 10x lens). Heat mediated antigen retrieval with Tris-EDTA buffer (pH 9.0).



Immunofluorescent analysis of (-20°C Methanol) fixed HeLa cells using EPRS antibody (67712-1-Ig, Clone: 1B7G2) at dilution of 1:200 and CoraLite®488-Conjugated AffiniPure Goat Anti-Mouse IgG(H+L).



Immunofluorescent analysis of (-20°C Methanol) fixed HeLa cells using EPRS antibody (67712-1-Ig, Clone: 1B7G2) at dilution of 1:800 and CoraLite®488-Conjugated AffiniPure Goat Anti-Mouse IgG(H+L). DAPI (blue).