

Nur für Forschungszwecke

# CEP290 Monoklonaler Antikörper

Katalog-Nr.:67716-1-Ig



## Allgemeine Informationen

<b>Katalog-Nr.:</b> 67716-1-Ig	<b>GenBank-Zugangsnummer:</b> BC008641	<b>Reinigungsmethode:</b> Protein-A-Reinigung
<b>Größe:</b> 150ul , Konzentration: 2100 µg/ml von80184 Nanodrop und 1000 µg/ml durch die Bradford-Methode mit BSA als Standard;	<b>GeneID (NCBI):</b> 2479	<b>CloneNo.:</b> 2C10G2
<b>Wirt:</b> Maus	<b>Vollständiger Name:</b> centrosomal protein 290kDa	<b>Empfohlene Verdünnungen:</b> WB 1:1000-1:4000
<b>Isotyp:</b> IgG2b	<b>Berechnete Masse:</b> 2479 aa, 290 kDa	
<b>Immunogen Katalognummer:</b> AG17457	<b>Beobachtete Masse:</b> 290 kDa	

## Anwendungen

<b>Geprüfte Anwendungen:</b> WB,ELISA	<b>Positivkontrollen:</b> WB : HEK-293-Zellen, HeLa-Zellen, K-562-Zellen, NCCIT-Zellen
<b>Getestete Reaktivität:</b> Human, Maus, Ratte	

## Hintergrundinformationen

Studies in the Chlamydomonas model system has shown that the ciliary protein CEP290 is a critical component of these Y-link junctions. Additionally, numerous studies have demonstrated that CEP290's function is critical for IFT- in CEP290 knockdown experiments, many proteins that would normally localize to the cilium fail to do so, and cilium formation is disrupted or absent. Mutations in CEP290 are accountable for cases of nephronophthisis, Leber congenital amaurosis and Joubert syndrome. In IF analysis of HeLa cells, the white arrows show centrosome and cilium staining. Two isoforms were produced by alternative splicing with predicted MW of 290 and 180 kDa according to UniProt.

## Lagerung

**Lagerungsbedingungen:**  
Bei -20°C lagern.  
**Lagerungspuffer:**  
PBS mit 0.02% Natriumazid und 50% Glycerin pH 7.3.  
Aliquotieren ist nicht notwendig bei -20°C Lagerung

**\*\*\* 20ul-Größen enthalten 0.1% BSA**

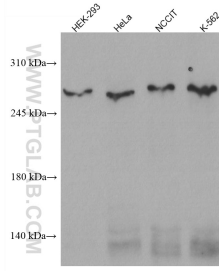
For technical support and original validation data for this product please contact:

T: 1 (888) 4PTGLAB (1-888-478-4522) (toll free  
in USA), or 1(312) 455-8498 (outside USA)

E: proteintech@ptglab.com  
W: ptglab.com

**This product is exclusively available under Proteintech Group brand and is not available to purchase from any other manufacturer.**

## Ausgewählte Validierungsdaten



Various lysates were subjected to SDS PAGE followed by western blot with 67716-1-Ig (CEP290 antibody) at dilution of 1:2000 incubated at room temperature for 1.5 hours.