

Nur für Forschungszwecke

ATG4B Monoklonaler Antikörper

Katalog-Nr.: 67727-1-Ig **1 Publikationen**



Allgemeine Informationen

Katalog-Nr.: 67727-1-Ig	GenBank-Zugangsnummer: BC000719	Reinigungsmethode: Protein-A-Reinigung
Größe: 150ul, Konzentration: 1000 µg/ml von 23192 Nanodrop und 499 µg/ml durch die Bradford-Methode mit BSA als Standard;	GeneID (NCBI): 23192	CloneNo.: 1G5A7
Wirt: Maus	Vollständiger Name: ATG4 autophagy related 4 homolog B (S. cerevisiae)	Empfohlene Verdünnungen: WB 1:2000-1:10000 IHC 1:250-1:1000 IF 1:200-1:800
Isotyp: IgG2a	Berechnete Masse: 44 kDa	
Immunogen Katalognummer: AG30510	Beobachtete Masse: 44 kDa	

Anwendungen

Geprüfte Anwendungen: IF, IHC, WB, ELISA	Positivkontrollen: WB: HeLa-Zellen, 4T1-Zellen, HEK-293-Zellen, HepG2-Zellen, Jurkat-Zellen, K-562-Zellen, NIH/3T3-Zellen, PC-12-Zellen
In Publikationen genannte Anwendungen: WB	IHC: humanes Nierengewebe, humanes Kolongewebe
Getestete Reaktivität: Human, Maus, Ratte	IF: HeLa-Zellen,
Zitierte Arten: Hausschwein, Human	
Hinweis-IHC: Antigendemaskierung mit TE-Puffer pH 9,0 empfohlen. (*) Wahlweise kann die Antigendemaskierung auch mit Citratpuffer pH 6,0 erfolgen.	

Hintergrundinformationen

ATG4B (autophagy 4) is also named as APG4B, AURL1, KIAA0943 and belongs to the peptidase C54 family. It is a homolog of yeast Apg4, a cysteine protease involved in autophagy and is a cytoplasmic enzyme. This protein is highly expressed in skeletal muscle, with lower expression in heart, liver, and pancreas and no expression is detected in fetal tissues by the northern blot. ATG4B is widely expressed in tumor cell lines (PMID:12446702). It has some isoforms produced by alternative splicing with molecular mass of 31-52 kDa.

Bemerkenswerte Veröffentlichungen

Verfasser	Pubmed ID	Journal	Anwendung
Sujie Dong	36049346	Vet Microbiol	WB

Lagerung

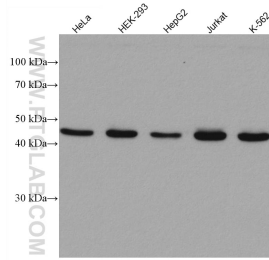
Lagerungsbedingungen:
Bei -20°C lagern.
Lagerungspuffer:
PBS mit 0.02% Natriumazid und 50% Glycerin pH 7.3.
Aliquotieren ist nicht notwendig bei -20°C Lagerung

***** 20ul-Größen enthalten 0.1% BSA**

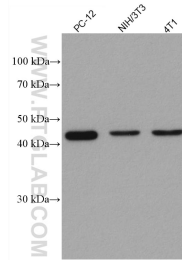
For technical support and original validation data for this product please contact:
T: 1 (888) 4PTGLAB (1-888-478-4522) (toll free in USA), or 1(312) 455-8498 (outside USA)
E: proteintech@ptglab.com
W: ptglab.com

This product is exclusively available under Proteintech Group brand and is not available to purchase from any other manufacturer.

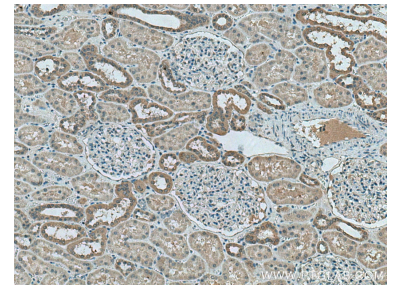
Ausgewählte Validierungsdaten



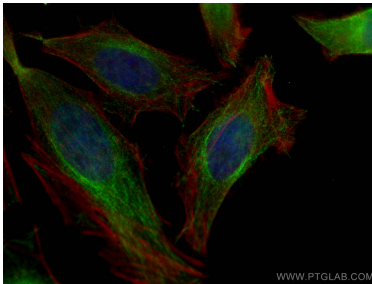
Various lysates were subjected to SDS PAGE followed by western blot with 67727-1-Ig (ATG4B antibody) at dilution of 1:5000 incubated at room temperature for 1.5 hours.



Various lysates were subjected to SDS PAGE followed by western blot with 67727-1-Ig (ATG4B antibody) at dilution of 1:5000 incubated at room temperature for 1.5 hours.



Immunohistochemical analysis of paraffin-embedded human kidney tissue slide using 67727-1-Ig (ATG4B antibody) at dilution of 1:500 (under 10x lens). Heat mediated antigen retrieval with Tris-EDTA buffer (pH 9.0).



Immunofluorescent analysis of (4% PFA) fixed HeLa cells using ATG4B antibody (67727-1-Ig, Clone: 1G5A7) at dilution of 1:400 and CoraLite®488-Conjugated AffiniPure Goat Anti-Mouse IgG(H+L), CL594-Phalloidin (red).