

Nur für Forschungszwecke

METTL3 Monoklonaler Antikörper

Katalog-Nr.:67733-1-Ig

Vorgestelltes Produkt

7 Publikationen



Allgemeine Informationen

Katalog-Nr.: 67733-1-Ig	GenBank-Zugangsnummer: BC001650	Reinigungsmethode: Protein-G-Reinigung
Größe: 150ul, Konzentration: 1000 µg/ml von56339 Nanodrop und 398 µg/ml durch die Bradford-Methode mit BSA als Standard;	GeneID (NCBI): von56339	CloneNo.: 2D8H1
Wirt: Maus	Vollständiger Name: methyltransferase like 3	Empfohlene Verdünnungen: WB 1:5000-1:50000 IHC 1:500-1:2000 IF 1:200-1:800
Isotyp: IgG1	Berechnete Masse: 64 kDa	
Immunogen Katalognummer: AG7110	Beobachtete Masse: 65-70 kDa	

Anwendungen

Geprüfte Anwendungen: FC, IF, IHC, WB, ELISA	Positivkontrollen:
In Publikationen genannte Anwendungen: IF, IHC, IP, WB	WB : HeLa-Zellen, A549-Zellen, HEK-293-Zellen, HepG2-Zellen, Jurkat-Zellen, K-562-Zellen
Getestete Reaktivität: Human, Maus	IHC : humanes Lungenkarzinomgewebe, humanes Kolonkarzinomgewebe, humanes Ösophaguskarzinomgewebe, humanes Urothelkarzinomgewebe
Zitierte Arten: Human, Maus	IF : Maushodengewebe,
Hinweis-IHC: Antigenmaskierung mit TE-Puffer pH 9,0 empfohlen. (*) Wahlweise kann die Antigenmaskierung auch mit Citratpuffer pH 6,0 erfolgen.	

Hintergrundinformationen

METTL3 is a key S-adenosyl-L-methionine-binding subunit, which is component of a complex multicomponent enzyme that catalyzes the methylation of internal adenosine residues in eukaryotic mRNA, forming N6-methyladenosine. It contains 2 putative nuclear localization signals and 2 consensus methylation motifs. The calculated molecular weight of METTL3 is 64 kDa, but modified METTL3 is about 65-70 kDa.

Bemerkenswerte Veröffentlichungen

Verfasser	Pubmed ID	Journal	Anwendung
Yanan Wang	36293529	Int J Mol Sci	WB,IHC
Zewei Sun	36368640	Clin Immunol	IF,IP
Yang Wang	36333630	Apoptosis	WB

Lagerung

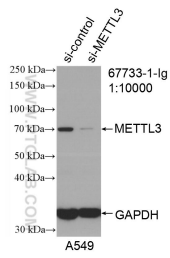
Lagerungsbedingungen:
Bei -20°C lagern. Nach dem Versand ein Jahr lang stabil
Lagerungspuffer:
PBS mit 0.02% Natriumazid und 50% Glycerin pH 7.3.
Aliquotieren ist nicht notwendig bei -20°C Lagerung

*** 20ul-Größen enthalten 0.1% BSA

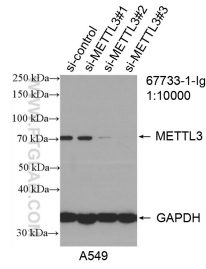
For technical support and original validation data for this product please contact:
T: 1 (888) 4PTGLAB (1-888-478-4522) (toll free in USA), or 1(312) 455-8498 (outside USA)
E: proteintech@ptglab.com
W: ptglab.com

This product is exclusively available under Proteintech Group brand and is not available to purchase from any other manufacturer.

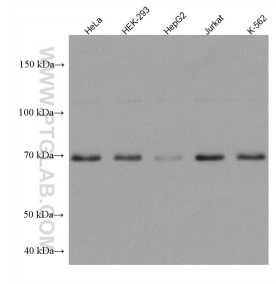
Ausgewählte Validierungsdaten



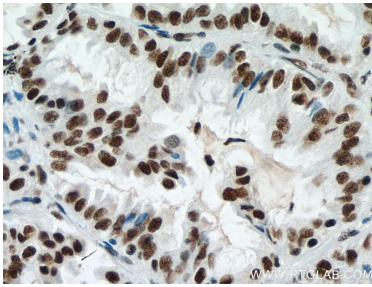
WB result of METTL3 antibody (67733-1-Ig; 1:10000; incubated at room temperature for 1.5 hours) with sh-Control and sh-METTL3 transfected A549 cells.



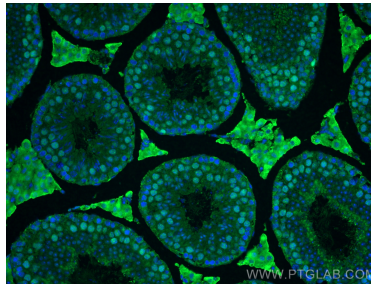
WB result of METTL3 antibody (67733-1-Ig; 1:10000; incubated at room temperature for 1.5 hours) with sh-Control and sh-METTL3 transfected A549 cells.



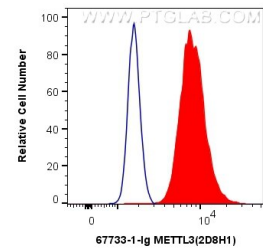
Various lysates were subjected to SDS PAGE followed by western blot with 67733-1-Ig (METTL3 antibody) at dilution of 1:10000 incubated at room temperature for 1.5 hours.



Immunohistochemical analysis of paraffin-embedded human lung cancer tissue slide using 67733-1-Ig (METTL3 antibody) at dilution of 1:1000 (under 40x lens). Heat mediated antigen retrieval with Tris-EDTA buffer (pH 9.0).



Immunofluorescent analysis of (4% PFA) fixed mouse testis tissue using METTL3 antibody (67733-1-Ig, Clone: 2D8H1) at dilution of 1:400 and CoraLite®488-Conjugated AffiniPure Goat Anti-Mouse IgG(H+L).



1×10^6 HEK-293 cells were intracellularly stained with 0.4 μ g Anti-Human METTL3 (67733-1-Ig, Clone: 2D8H1) and CoraLite®488-Conjugated AffiniPure Goat Anti-Mouse IgG(H+L) at dilution 1:1000 (red), or 0.4 μ g Control Antibody. Cells were fixed and permeabilized with Transcription Factor Staining Buffer Kit (PF00011).