

## Allgemeine Informationen

<b>Katalog-Nr.:</b> 67734-1-Ig	<b>GenBank-Zugangsnummer:</b> BC034986	<b>Reinigungsmethode:</b> Protein-A-Reinigung
<b>Größe:</b> 150ul , Konzentration: 1000 µg/ml von56474 Nanodrop und 692 µg/ml durch die Bradford-Methode mit BSA als Standard;	<b>GeneID (NCBI):</b> 56474	<b>CloneNo.:</b> 1A3B8
<b>Wirt:</b> Maus	<b>Vollständiger Name:</b> CTP synthase II	<b>Empfohlene Verdünnungen:</b> WB 1:2000-1:10000 IHC 1:250-1:1000 IF 1:400-1:1600
<b>Isotyp:</b> IgG2a	<b>Berechnete Masse:</b> 586 aa, 66 kDa	
<b>Immunogen Katalognummer:</b> AG30258	<b>Beobachtete Masse:</b> 66 kDa	

## Anwendungen

<b>Geprüfte Anwendungen:</b> IF, IHC, WB, ELISA	<b>Positivkontrollen:</b>
<b>Getestete Reaktivität:</b> Human, Maus	<b>WB :</b> LNCaP-Zellen, HEK-293-Zellen, HeLa-Zellen, HepG2-Zellen, K-562-Zellen, NIH/3T3-Zellen, PC-12- Zellen, RAW 264.7-Zellen, U2OS-Zellen
<b>Hinweis-IHC: Antigendemaskierung mit TE- Puffer pH 9,0 empfohlen. (*) Wahlweise kann die Antigendemaskierung auch mit Citratpuffer pH 6,0 erfolgen.</b>	<b>IHC :</b> humanes Prostatakarzinomgewebe, <b>IF :</b> PC-12-Zellen, humanes Prostatakarzinomgewebe

## Hintergrundinformationen

CTPS2 (CTP synthase 2) is also named as UTP--ammonia ligase 2 and belongs to the CTP synthase family.It catalyzes the ATP-dependent amination of UTP to CTP with either L-glutamine or ammonia as the source of nitrogen and constitutes the rate-limiting enzyme in the synthesis of cytosine nucleotides.

## Lagerung

**Lagerungsbedingungen:**  
Bei -20°C lagern. Nach dem Versand ein Jahr lang stabil  
**Lagerungspuffer:**  
PBS mit 0.02% Natriumazid und 50% Glycerin pH 7.3.  
**Aliquotieren ist nicht notwendig bei -20°C Lagerung**

\*\*\* 20ul-Größen enthalten 0.1% BSA

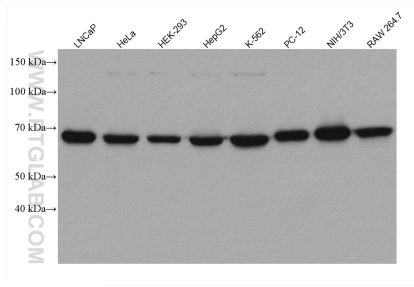
For technical support and original validation data for this product please contact:

T: 1 (888) 4PTGLAB (1-888-478-4522) (toll free  
in USA), or 1(312) 455-8498 (outside USA)

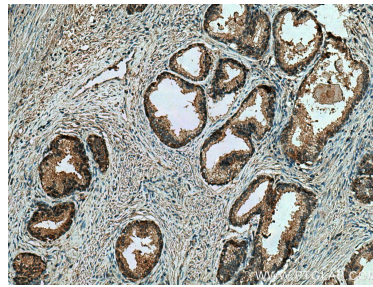
E: proteintech@ptglab.com  
W: ptglab.com

This product is exclusively available under Proteintech Group brand and is not available to purchase from any other manufacturer.

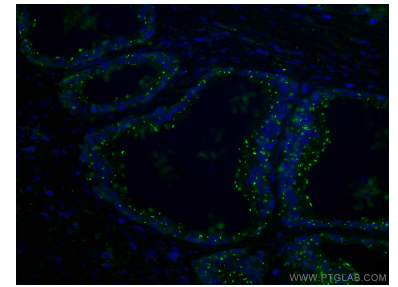
## Ausgewählte Validierungsdaten



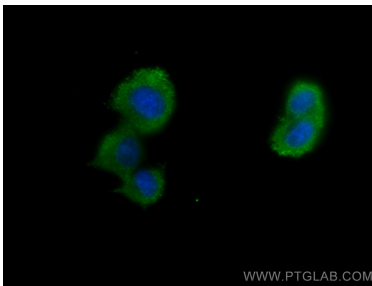
Various lysates were subjected to SDS PAGE followed by western blot with 67734-1-Ig (CTPS2 antibody) at dilution of 1:5000 incubated at room temperature for 1.5 hours.



Immunohistochemical analysis of paraffin-embedded human prostate cancer tissue slide using 67734-1-Ig (CTPS2 antibody) at dilution of 1:500 (under 10x lens). Heat mediated antigen retrieval with Tris-EDTA buffer (pH 9.0).



Immunofluorescent analysis of (4% PFA) fixed human prostate cancer tissue using CTPS2 antibody (67734-1-Ig, Clone: 1A3B8) at dilution of 1:400 and CoraLite®488-Conjugated AffiniPure Goat Anti-Mouse IgG(H+L).



Immunofluorescent analysis of (-20°C Methanol) fixed PC-12 cells using CTPS2 antibody (67734-1-Ig, Clone: 1A3B8) at dilution of 1:800 and CoraLite®488-Conjugated AffiniPure Goat Anti-Mouse IgG(H+L).