

Nur für Forschungszwecke

smooth muscle actin specific Monoklonaler Antikörper



Katalog-Nr.: 67735-1-Ig **53 Publikationen**

Allgemeine Informationen

Katalog-Nr.: 67735-1-Ig	GenBank-Zugangsnummer: NM_001613	Reinigungsmethode: Protein-A-Reinigung
Größe: 150ul, Konzentration: 500 µg/ml von 59 Nanodrop und 252 µg/ml durch die Bradford-Methode mit BSA als Standard;	GeneID (NCBI): 59	CloneNo.: 1E9A11
Wirt: Maus	Vollständiger Name: actin, alpha 2, smooth muscle, aorta	Empfohlene Verdünnungen: WB 1:20000-1:100000 IHC 1:2500-1:10000 IF 1:200-1:800
Isotyp: IgG1	Berechnete Masse: 42 kDa	
	Beobachtete Masse: 42 kDa	

Anwendungen

Gepriüfte Anwendungen:

FC, IF, IHC, WB, ELISA

In Publikationen genannte Anwendungen:

IF, IHC, WB

Getestete Reaktivität:

Hausschwein, Human, Maus, Ratte

Zitierte Arten:

Human, Maus, Ratte, Zebrafisch

Hinweis-IHC: Antigendemaskierung mit TE-Puffer pH 9,0 empfohlen. (*) Wahlweise kann die Antigendemaskierung auch mit Citratpuffer pH 6,0 erfolgen.

Positivkontrollen:

WB: Ratten-Magengewebe, Hausschwein-Kolongewebe, Hausschwein-Venengewebe, Hausschwein-Magengewebe, Kaninchen-Magengewebe, Maus-Kolongewebe, Ratten-Kolongewebe

IHC: humanes Kolongewebe, humanes Appendizitis-Gewebe, humanes Lebergewebe, humanes Leberkarzinomgewebe, Ratten-Kolongewebe

IF: Rattenherzgewebe, C2C12-Zellen

Hintergrundinformationen

ACTA2 (also known as α -smooth muscle actin or α -SMA) belongs to the actin family. Actins are highly conserved proteins that are involved in various types of cell motility and are ubiquitously expressed in all eukaryotic cells. ACTA2 is primarily expressed in vascular smooth muscle and anti-ACTA2 is commonly used to marker smooth muscle cells.

Bemerkenswerte Veröffentlichungen

Verfasser	Pubmed ID	Journal	Anwendung
Longxiang Tu	34546211	Plast Reconstr Surg	WB
Silvia Specia	34529707	PLoS One	WB,IF
Ji-Ting Liu	34604241	Front Cell Dev Biol	WB

Lagerung

Lagerungsbedingungen:

Bei -20°C lagern. Nach dem Versand ein Jahr lang stabil

Lagerungspuffer:

PBS mit 0.02% Natriumazid und 50% Glycerin pH 7.3.

Aliquotieren ist nicht notwendig bei -20°C Lagerung

***** 20ul-Größen enthalten 0.1% BSA**

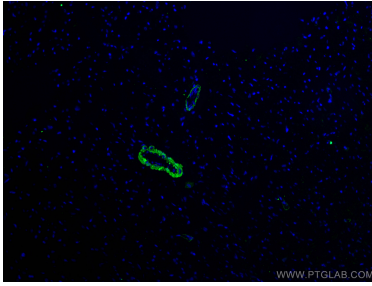
For technical support and original validation data for this product please contact:

T: 1 (888) 4PTGLAB (1-888-478-4522) (toll free in USA), or 1(312) 455-8498 (outside USA)

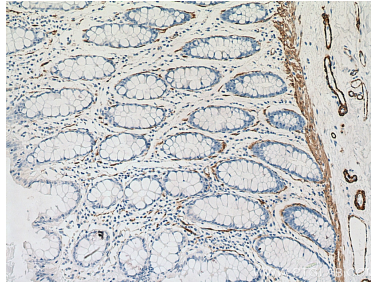
E: proteintech@ptglab.com
W: ptglab.com

This product is exclusively available under Proteintech Group brand and is not available to purchase from any other manufacturer.

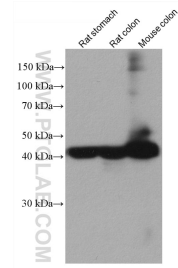
Ausgewählte Validierungsdaten



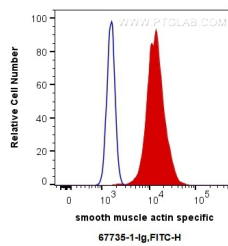
Immunofluorescent analysis of (4% PFA) fixed rat heart tissue using a-SMA specific antibody (67735-1-Ig, Clone: 1E9A11) at dilution of 1:400 and CoraLite®488-Conjugated AffiniPure Goat Anti-Mouse IgG(H+L).



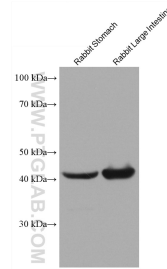
Immunohistochemical analysis of paraffin-embedded human colon tissue slide using 67735-1-Ig (a-SMA specific antibody) at dilution of 1:5000 (under 10x lens). Heat mediated antigen retrieval with Tris-EDTA buffer (pH 9.0).



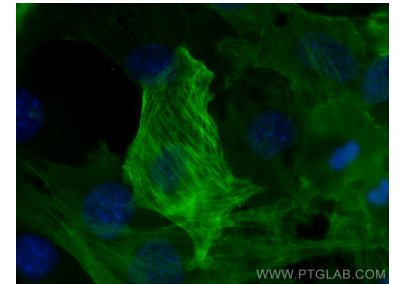
Various lysates were subjected to SDS PAGE followed by western blot with 67735-1-Ig (a-SMA specific antibody) at dilution of 1:50000 incubated at room temperature for 1.5 hours.



1x10⁶ C2C12 cells were intracellularly stained with 0.4 ug Anti-Human smooth muscle actin specific (67735-1-Ig, Clone:1E9A11) and CoraLite®488-Conjugated AffiniPure Goat Anti-Mouse IgG(H+L) at dilution 1:1000 (red), or 0.4 ug Control Antibody. Cells were fixed with 4% PFA and permeabilized with Flow Cytometry Perm Buffer (PF00011-C).



Various lysates were subjected to SDS PAGE followed by western blot with 67735-1-Ig (smooth muscle actin specific antibody) at dilution of 1:50000 incubated at room temperature for 1.5 hours.



Immunofluorescent analysis of (-20°C Methanol) fixed C2C12 cells using smooth muscle actin specific antibody (67735-1-Ig, Clone: 1E9A11) at dilution of 1:400 and CoraLite®488-Conjugated AffiniPure Goat Anti-Mouse IgG(H+L).