

Nur für Forschungszwecke

# PTGES3 Monoklonaler Antikörper

Katalog-Nr.: 67736-1-Ig **1 Publikationen**



## Allgemeine Informationen

<b>Katalog-Nr.:</b> 67736-1-Ig	<b>GenBank-Zugangsnummer:</b> BC003005	<b>Reinigungsmethode:</b> Protein-G-Reinigung
<b>Größe:</b> 150ul, Konzentration: 1000 µg/ml von10728 Nanodrop;	<b>GeneID (NCBI):</b> 10728	<b>CloneNo.:</b> 3C11D11
<b>Wirt:</b> Maus	<b>Vollständiger Name:</b> prostaglandin E synthase 3 (cytosolic)	<b>Empfohlene Verdünnungen:</b> WB 1:5000-1:50000 IHC 1:500-1:2000 IF 1:200-1:800
<b>Isotyp:</b> IgG1	<b>Berechnete Masse:</b> 19 kDa	
<b>Immunogen Katalognummer:</b> AG7870	<b>Beobachtete Masse:</b> 22 kDa	

## Anwendungen

### Geprüfte Anwendungen:

IF, IHC, WB, ELISA

### In Publikationen genannte Anwendungen:

WB

### Getestete Reaktivität:

Hausschwein, Human, Maus, Ratte

### Zitierte Arten:

Human

**Hinweis-IHC: Antigendemaskierung mit TE-Puffer pH 9,0 empfohlen. (\*) Wahlweise kann die Antigendemaskierung auch mit Citratpuffer pH 6,0 erfolgen.**

### Positivkontrollen:

WB: A549-Zellen, Hausschwein-Hirngewebe, HeLa-Zellen, HepG2-Zellen, NIH/3T3-Zellen, PC-3-Zellen

IHC: humanes Lungenkarzinomgewebe,

IF: HepG2-Zellen,

## Hintergrundinformationen

P23, encoded by the gene PTGES3, plays a key role in glucocorticoid signaling and was increased at the mRNA level in the DLPFC in individuals with schizophrenia (PMID: 24345775). In the GR heterocomplex in vitro, p23 is an obligatory co-factor<sup>19</sup> and is the limiting component of the complex<sup>44</sup>, functioning to stabilize the interaction of the complex with GR in the cytoplasm. Paradoxically, p23 also acts in the nucleus to inhibit GR-mediated gene transcription and disassemble GR transcriptional machinery in the nucleus (PMID: 12077419). In vivo, p23 is critical for appropriate glucocorticoid responsiveness (PMID: 17000766).

## Bemerkenswerte Veröffentlichungen

Verfasser	Pubmed ID	Journal	Anwendung
Pengxiang Gao	35820363	Int Immunopharmacol	WB

## Lagerung

### Lagerungsbedingungen:

Bei -20°C lagern. Nach dem Versand ein Jahr lang stabil

### Lagerungspuffer:

PBS mit 0.02% Natriumazid und 50% Glycerin pH 7.3.

Aliquotieren ist nicht notwendig bei -20°C Lagerung

**\*\*\* 20ul-Größen enthalten 0.1% BSA**

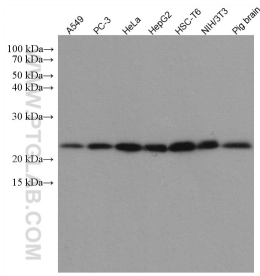
For technical support and original validation data for this product please contact:

T: 1 (888) 4PTGLAB (1-888-478-4522) (toll free in USA), or 1(312) 455-8498 (outside USA)

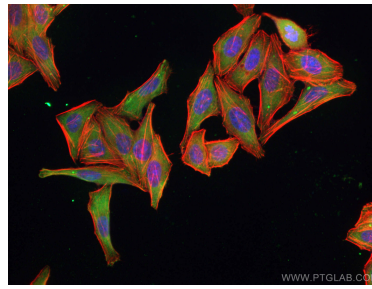
E: proteintech@ptglab.com  
W: ptglab.com

**This product is exclusively available under Proteintech Group brand and is not available to purchase from any other manufacturer.**

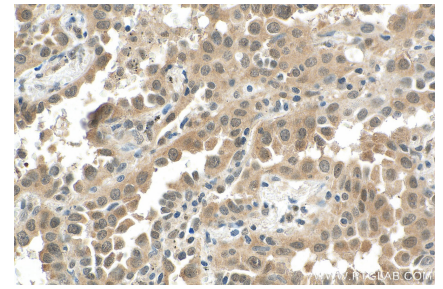
## Ausgewählte Validierungsdaten



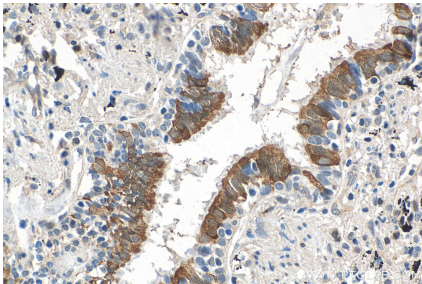
Various lysates were subjected to SDS PAGE followed by western blot with 67736-1-Ig (PTGES3 antibody) at dilution of 1:10000 incubated at room temperature for 1.5 hours.



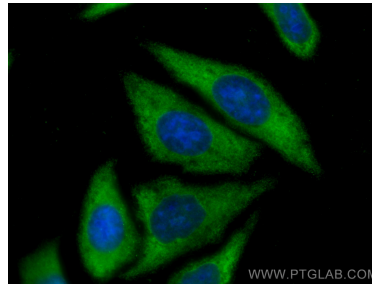
Immunofluorescent analysis of (-20°C Ethanol) fixed HepG2 cells using PTGES3 antibody (67736-1-Ig, Clone: 3C11D11 ) at dilution of 1:400 and CoraLite®488-Conjugated AffiniPure Goat Anti-Mouse IgG(H+L).



Immunohistochemical analysis of paraffin-embedded human lung cancer tissue slide using 67736-1-Ig (PTGES3 antibody) at dilution of 1:1000 (under 40x lens). Heat mediated antigen retrieval with Tris-EDTA buffer (pH 9.0).



Immunohistochemical analysis of paraffin-embedded human lung cancer tissue slide using 67736-1-Ig (PTGES3 antibody) at dilution of 1:1000 (under 40x lens). Heat mediated antigen retrieval with Tris-EDTA buffer (pH 9.0).



Immunofluorescent analysis of (-20°C Ethanol) fixed HepG2 cells using PTGES3 antibody (67736-1-Ig, Clone: 3C11D11 ) at dilution of 1:800 and CoraLite®488-Conjugated AffiniPure Goat Anti-Mouse IgG(H+L).