

Allgemeine Informationen

| | | |
|---|---|--|
| Katalog-Nr.: 67738-1-Ig | GenBank-Zugangsnummer: BC000525 | Reinigungsmethode: Protein-G-Reinigung |
| Größe: 150ul , Konzentration: 1000 µg/ml von2806 Nanodrop; | GeneID (NCBI): 150000 | CloneNo.: 1B6C6 |
| Wirt: Maus | Vollständiger Name: glutamic-oxaloacetic transaminase 2, mitochondrial (aspartate aminotransferase 2) | Empfohlene Verdünnungen: WB 1:2000-1:10000 IHC 1:4000-1:16000 |
| Isotyp: IgG1 | Berechnete Masse: 47 kDa | |
| Immunogen Katalognummer: AG6600 | Beobachtete Masse: 39-40 kDa | |

Anwendungen

Geprüfte Anwendungen:

IHC, WB, ELISA

Getestete Reaktivität:

Hausschwein, Huhn, Human, Maus, Ratte

Hinweis-IHC: Antigendemaskierung mit TE-Puffer pH 9,0 empfohlen. (*) Wahlweise kann die Antigendemaskierung auch mit Citratpuffer pH 6,0 erfolgen.

Positivkontrollen:

WB : Hausschwein-Hirngewebe, A431-Zellen, HEK-293-Zellen, HepG2-Zellen

IHC : Mausherzgewebe, Rattenherzgewebe, Rattenhirngewebe

Hintergrundinformationen

GOT2 encodes the mitochondrial glutamate oxaloacetate transaminase and plays an essential role in the intracellular NAD(H) redox balance. Upregulation of GOT2 has been reported in various cancers, including breast cancer and pancreatic cancer. GOT2 mutation leads to autosomal recessive neurometabolic disorder.

Lagerung

Lagerungsbedingungen:

Bei -20°C lagern.

Lagerungspuffer:

PBS mit 0.02% Natriumazid und 50% Glycerin pH 7.3.

Aliquotieren ist nicht notwendig bei -20°C Lagerung

***** 20ul-Größen enthalten 0.1% BSA**

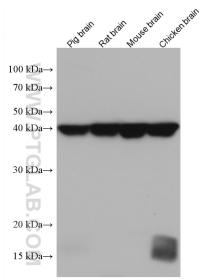
For technical support and original validation data for this product please contact:

T: 1 (888) 4PTGLAB (1-888-478-4522) (toll free in USA), or 1(312) 455-8498 (outside USA)

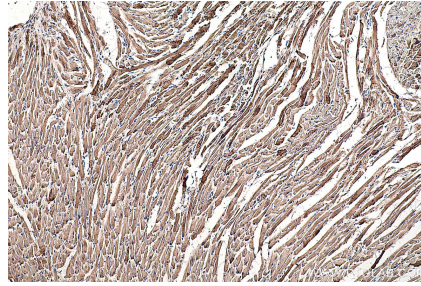
E: proteintech@ptglab.com
W: ptglab.com

This product is exclusively available under Proteintech Group brand and is not available to purchase from any other manufacturer.

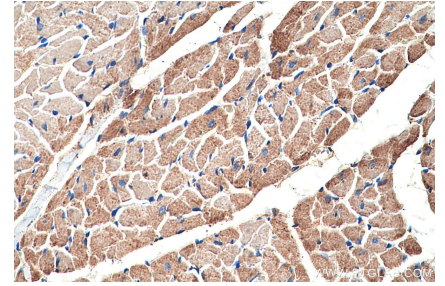
Ausgewählte Validierungsdaten



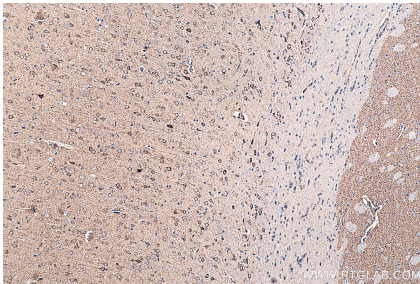
Various lysates were subjected to SDS PAGE followed by western blot with 67738-1-Ig (GOT2 antibody) at dilution of 1:5000 incubated at room temperature for 1.5 hours.



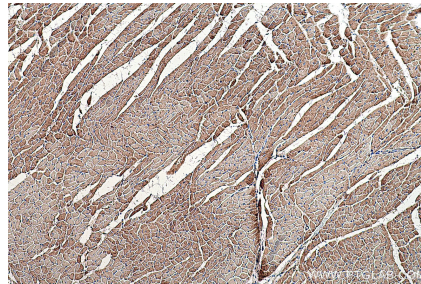
Immunohistochemical analysis of paraffin-embedded mouse heart tissue slide using 67738-1-Ig (GOT2 antibody) at dilution of 1:8000 (under 10x lens). Heat mediated antigen retrieval with Tris-EDTA buffer (pH 9.0).



Immunohistochemical analysis of paraffin-embedded rat heart tissue slide using 67738-1-Ig (GOT2 antibody) at dilution of 1:8000 (under 40x lens). Heat mediated antigen retrieval with Tris-EDTA buffer (pH 9.0).



Immunohistochemical analysis of paraffin-embedded rat brain tissue slide using 67738-1-Ig (GOT2 antibody) at dilution of 1:8000 (under 10x lens). Heat mediated antigen retrieval with Tris-EDTA buffer (pH 9.0).



Immunohistochemical analysis of paraffin-embedded rat heart tissue slide using 67738-1-Ig (GOT2 antibody) at dilution of 1:8000 (under 10x lens). Heat mediated antigen retrieval with Tris-EDTA buffer (pH 9.0).