

Nur für Forschungszwecke

SIX1 Monoklonaler Antikörper

Katalog-Nr.:67741-1-Ig



Allgemeine Informationen

Katalog-Nr.: 67741-1-Ig	GenBank-Zugangsnummer: BC008874	Reinigungsmethode: Protein-A-Reinigung
Größe: 150ul , Konzentration: 1000 µg/ml von6495 Nanodrop;	GeneID (NCBI): 6495	CloneNo.: 2D7D1
Wirt: Maus	Vollständiger Name: SIX homeobox 1	Empfohlene Verdünnungen: WB 1:1000-1:4000
Isotyp: IgG1	Berechnete Masse: 32 kDa	
Immunogen Katalognummer: AG28570	Beobachtete Masse: 30-35 kDa	

Anwendungen

Geprüfte Anwendungen: WB, ELISA	Positivkontrollen: WB : LO2-Zellen, HeLa-Zellen, Maus-Skelettmuskelgewebe, Ratten-Skelettmuskelgewebe
Getestete Reaktivität: Hausschwein, Human, Kaninchen, Maus, Ratte	

Hintergrundinformationen

SIX1 belongs to SIX family that contains a divergent DNA-binding homeodomain and an upstream SIX domain, which may participate both in determining DNA-binding specificity and in mediating protein-protein interactions. It may be involved in limb tendon and ligament development, and specifically expressed in skeletal muscle. SIX1 plays a essential role in the development of numerous organs and shows littl to no expression in most non-neoplastic adult tissue, yet is overexpression in a number of meoplasms where it increases cell proliferation and survival. The calcualted molecular weight of SIX1 is 32kDa, but modified SIX1 is about 35 kDa.

Lagerung

Lagerungsbedingungen:
Bei -20°C lagern. Nach dem Versand ein Jahr lang stabil
Lagerungspuffer:
PBS mit 0.02% Natriumazid und 50% Glycerin pH 7.3.
Aliquotieren ist nicht notwendig bei -20°C Lagerung

*** 20ul-Größen enthalten 0.1% BSA

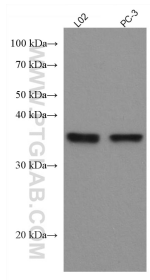
For technical support and original validation data for this product please contact:

T: 1 (888) 4PTGLAB (1-888-478-4522) (toll free in USA), or 1(312) 455-8498 (outside USA)

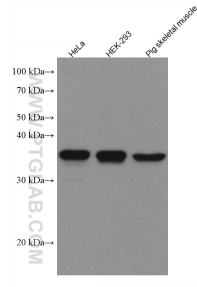
E: proteintech@ptglab.com
W: ptglab.com

This product is exclusively available under Proteintech Group brand and is not available to purchase from any other manufacturer.

Ausgewählte Validierungsdaten



Various lysates were subjected to SDS PAGE followed by western blot with 67741-1-Ig (SIX1 antibody) at dilution of 1:2000 incubated at room temperature for 1.5 hours.



Various lysates were subjected to SDS PAGE followed by western blot with 67741-1-Ig (SIX1 antibody) at dilution of 1:2000 incubated at room temperature for 1.5 hours.