

Nur für Forschungszwecke

RUVBL1 Monoklonaler Antikörper

Katalog-Nr.:67750-1-Ig



Allgemeine Informationen

Katalog-Nr.: 67750-1-Ig	GenBank-Zugangsnummer: BC002993	Reinigungsmethode: Protein-G-Reinigung
Größe: 150ul , Konzentration: 1000 µg/ml von8607 Nanodrop;	GeneID (NCBI): 1F2D9	CloneNo.: 1F2D9
Wirt: Maus	Vollständiger Name: RuvB-like 1 (E. coli)	Empfohlene Verdünnungen: WB 1:5000-1:50000
Isotyp: IgG1	Berechnete Masse: 456 aa, 50 kDa	
Immunogen Katalognummer: AG16688	Beobachtete Masse: 50 kDa	

Anwendungen

Geprüfte Anwendungen:
WB, ELISA
Getestete Reaktivität:
Human, Ratte

Positivkontrollen:

WB : U2OS-Zellen, A431-Zellen, A549-Zellen, HCT 116-Zellen, HeLa-Zellen, HT-1080.Zellen, K-562-Zellen

Hintergrundinformationen

RUVBL1 is a member of the AAA (ATPase associated with diverse cellular activities) family of proteins that is associated with several chromatin-remodelling complexes and has important roles in transcriptional regulation, the DNA damage response, telomerase activity, snoRNP assembly, cellular transformation and cancer metastasis[PMID: 21617703]. It consists of 456 amino acids (50 kDa) and interacts with TATA-binding protein (TBP), which is a central component for transcriptional regulation by forming complexes with various transcription regulators. RUVBL1 is a component of a large nuclear protein complex, possibly the RNA polymerase II holoenzyme. RUVBL1 is also highly homologous to RuvB proteins that function as a DNA helicase promote branch migration of the Holliday junction[PMID: 9588198].

Lagerung

Lagerungsbedingungen:
Bei -20°C lagern. Nach dem Versand ein Jahr lang stabil
Lagerungspuffer:
PBS mit 0.02% Natriumazid und 50% Glycerin pH 7.3.
Aliquotieren ist nicht notwendig bei -20°C Lagerung

*** 20ul-Größen enthalten 0.1% BSA

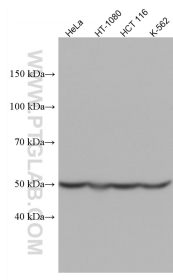
For technical support and original validation data for this product please contact:

T: 1 (888) 4PTGLAB (1-888-478-4522) (toll free
in USA), or 1(312) 455-8498 (outside USA)

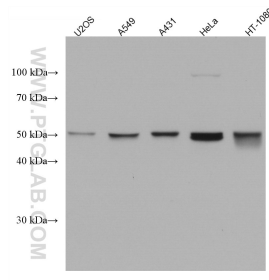
E: proteintech@ptglab.com
W: ptglab.com

This product is exclusively available under Proteintech Group brand and is not available to purchase from any other manufacturer.

Ausgewählte Validierungsdaten



Various lysates were subjected to SDS PAGE followed by western blot with 67750-1-Ig (RUVBL1 antibody) at dilution of 1:2000 incubated at room temperature for 1.5 hours.



Various lysates were subjected to SDS PAGE followed by western blot with 67750-1-Ig (RUVBL1 antibody) at dilution of 1:10000 incubated at room temperature for 1.5 hours.