

Nur für Forschungszwecke

Human IgG lambda chain Monoklonaler Antikörper



Katalog-Nr.:67762-1-Ig

Allgemeine Informationen

Katalog-Nr.: 67762-1-Ig	GenBank-Zugangsnummer: BC007782	Reinigungsmethode: Protein-A-Reinigung
Größe: 150ul, Konzentration: 500 µg/ml von Nanodrop;	GeneID (NCBI): 3537	CloneNo.: 1D12B5
Wirt: Maus	Vollständiger Name: immunoglobulin lambda constant 1 (Mcg marker)	Empfohlene Verdünnungen: WB 1:2000-1:10000 IHC 1:1250-1:5000 IF 1:400-1:1600
Isotyp: IgG2a	Berechnete Masse: 233 aa, 25 kDa	
Immunogen Katalognummer: AG14783	Beobachtete Masse: ~25 kDa	

Anwendungen

Geprüfte Anwendungen:

IF, IHC, WB, ELISA

Getestete Reaktivität:

Human

Hinweis-IHC: Antigenmaskierung mit TE-Puffer pH 9,0 empfohlen. (*) Wahlweise kann die Antigenmaskierung auch mit Citratpuffer pH 6,0 erfolgen.

Positivkontrollen:

WB : human plasma,

IHC : humanes Tonsillitisgewebe,

IF : humanes Tonsillitisgewebe,

Hintergrundinformationen

This antibody detects Lambda chain of human IgG.

Lagerung

Lagerungsbedingungen:

Bei -20°C lagern.

Lagerungspuffer:

PBS mit 0.02% Natriumazid und 50% Glycerin pH 7.3.

Aliquotieren ist nicht notwendig bei -20°C Lagerung

*** 20ul-Größen enthalten 0.1% BSA

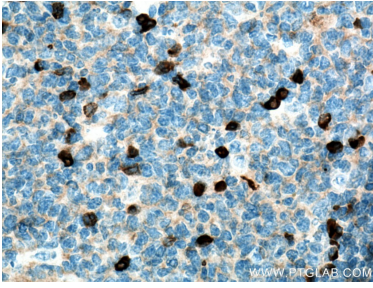
For technical support and original validation data for this product please contact:

T: 1 (888) 4PTGLAB (1-888-478-4522) (toll free
in USA), or 1(312) 455-8498 (outside USA)

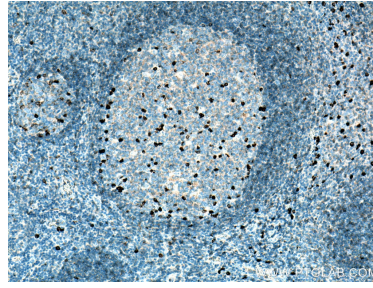
E: proteintech@ptglab.com
W: ptglab.com

This product is exclusively available under Proteintech Group brand and is not available to purchase from any other manufacturer.

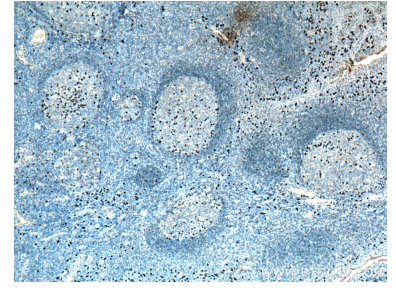
Ausgewählte Validierungsdaten



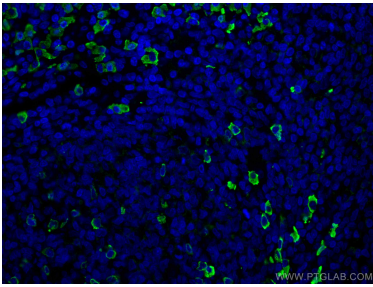
Immunohistochemical analysis of paraffin-embedded human tonsillitis tissue slide using 67762-1-Ig (Human IgG lambda chain antibody) at dilution of 1:2500 (under 40x lens). Heat mediated antigen retrieval with Tris-EDTA buffer (pH 9.0).



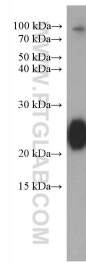
Immunohistochemical analysis of paraffin-embedded human tonsillitis tissue slide using 67762-1-Ig (Human IgG lambda chain antibody) at dilution of 1:2500 (under 10x lens). Heat mediated antigen retrieval with Tris-EDTA buffer (pH 9.0).



Immunohistochemical analysis of paraffin-embedded human tonsillitis tissue slide using 67762-1-Ig (Human IgG lambda chain antibody) at dilution of 1:2500 (under 4x lens). Heat mediated antigen retrieval with Tris-EDTA buffer (pH 9.0).



Immunofluorescent analysis of (4% PFA) fixed human tonsillitis tissue using Human IgG lambda chain antibody (67762-1-Ig, Clone: 1D12B5) at dilution of 1:150 and CoraLite® 488-Conjugated AffiniPure Goat Anti-Mouse IgG(H+L).



80 nL human plasma were subjected to SDS PAGE followed by western blot with 67762-1-Ig (Human IgG lambda chain antibody) at dilution of 1:5000 incubated at room temperature for 1.5 hours.