

Nur für Forschungszwecke

GOLPH3 Monoklonaler Antikörper

Katalog-Nr.: 67777-1-Ig **1 Publikationen**



Allgemeine Informationen

Katalog-Nr.: 67777-1-Ig	GenBank-Zugangsnummer: BC033725	Reinigungsmethode: Protein-A-Reinigung
Größe: 150ul, Konzentration: 1000 µg/ml von 64083	GeneID (NCBI): 64083	CloneNo.: 3H2A5
Nanodrop;	Vollständiger Name: golgi phosphoprotein 3 (coat-protein)	Empfohlene Verdünnungen: WB 1:5000-1:50000
Wirt: Maus	Berechnete Masse: 298 aa, 34 kDa	IHC 1:500-1:2000 IF 1:200-1:800
Isotyp: IgG2a	Immunogen Katalognummer: AG5443	

Anwendungen

Geprüfte Anwendungen:

IF, IHC, WB, ELISA

In Publikationen genannte Anwendungen:

PLA

Getestete Reaktivität:

Human, Maus, Ratte

Zitierte Arten:

Human

Positivkontrollen:

WB: HeLa-Zellen, 4T1-Zellen, Jurkat-Zellen, K-562-Zellen, NIH/3T3-Zellen

IHC: humanes Kolonkarzinomgewebe, humanes Leberkarzinomgewebe

IF: HeLa-Zellen,

Hinweis-IHC: Antigendemaskierung mit TE-Puffer pH 9,0 empfohlen. (*) Wahlweise kann die Antigendemaskierung auch mit Citratpuffer pH 6,0 erfolgen.

Hintergrundinformationen

GOLPH3 (also called GPP34, GMx33, MIDAS, or yeast Vps74p) is a 34-kDa Golgi-associated protein conserved from yeast to human. GOLPH3 binds to PtdIns(4)P-rich trans-Golgi membranes and MYO18A conveying a tensile force required for efficient tubule and vesicle formation (PMID: 19837035). GOLPH3 has been recently demonstrated as a novel oncoprotein amplified in various types of human malignancies, including melanoma, breast, non-small cell lung cancer, gliomas and connective tissue tumors (PMID:19553991; 23006319; 21499727; 22745132). Enhanced activation of mTOR signalling represents a molecular basis for the oncogenic activity of GOLPH3 (PMID: 19553991).

Bemerkenswerte Veröffentlichungen

Verfasser	Pubmed ID	Journal	Anwendung
Jun-Wei Song	34671013	Cell Death Dis	PLA

Lagerung

Lagerungsbedingungen:

Bei -20°C lagern.

Lagerungspuffer:

PBS mit 0.02% Natriumazid und 50% Glycerin pH 7.3.

Aliquotieren ist nicht notwendig bei -20°C Lagerung

***** 20ul-Größen enthalten 0.1% BSA**

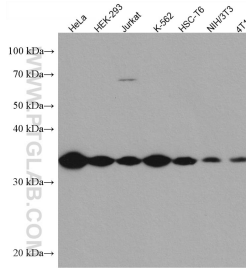
For technical support and original validation data for this product please contact:

T: 1 (888) 4PTGLAB (1-888-478-4522) (toll free in USA), or 1(312) 455-8498 (outside USA)

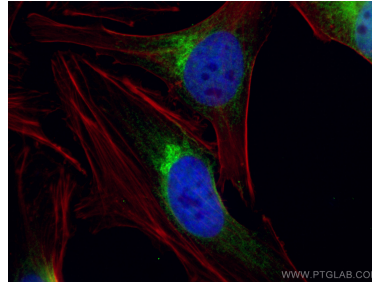
E: proteintech@ptglab.com
W: ptglab.com

This product is exclusively available under Proteintech Group brand and is not available to purchase from any other manufacturer.

Ausgewählte Validierungsdaten



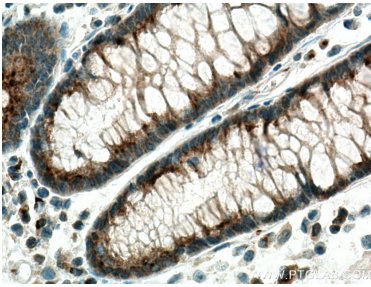
Various lysates were subjected to SDS PAGE followed by western blot with 67777-1-Ig (GOLPH3 antibody) at dilution of 1:10000 incubated at room temperature for 1.5 hours.



Immunofluorescent analysis of (4% PFA) fixed HeLa cells using GOLPH3 antibody (67777-1-Ig, Clone: 3H2A5) at dilution of 1:400 and CoraLite®488-Conjugated AffiniPure Goat Anti-Mouse IgG(H+L), CL594-Phalloidin (red).



Immunohistochemical analysis of paraffin-embedded human colon cancer tissue slide using 67777-1-Ig (GOLPH3 antibody) at dilution of 1:1000 (under 40x lens). Heat mediated antigen retrieval with Tris-EDTA buffer (pH 9.0).



Immunohistochemical analysis of paraffin-embedded human colon cancer tissue slide using 67777-1-Ig (GOLPH3 antibody) at dilution of 1:1000 (under 40x lens). Heat mediated antigen retrieval with Tris-EDTA buffer (pH 9.0).