

Allgemeine Informationen

Katalog-Nr.: 67779-1-Ig	GenBank-Zugangsnummer: BC021958	Reinigungsmethode: Protein-A-Reinigung
Größe: 150ul , Konzentration: 1000 µg/ml von51099 Nanodrop und 512 µg/ml durch die Bradford-Methode mit BSA als Standard;	GeneID (NCBI): 51099	CloneNo.: 2B12C2
Wirt: Maus	Vollständiger Name: abhydrolase domain containing 5	Empfohlene Verdünnungen: WB 1:1000-1:6000 IF 1:200-1:800
Isotyp: IgG2b	Berechnete Masse: 349 aa, 39 kDa	
Immunogen Katalognummer: AG30256	Beobachtete Masse: 39 kDa	

Anwendungen

Geprüfte Anwendungen: IF, WB, ELISA	Positivkontrollen:
Getestete Reaktivität: Human	WB : LNCaP-Zellen, HEK-293-Zellen, HeLa-Zellen, HepG2-Zellen, Jurkat-Zellen, K-562-Zellen, Raji- Zellen, THP-1-Zellen
	IF : HepG2-Zellen,

Hintergrundinformationen

ABHD5, also named as NCIE2 and CGI-58, belongs to the peptidase S33 family. ABHD4/ABHD5 subfamily. It is a Lysophosphatidic acid acyltransferase which functions in phosphatidic acid biosynthesis. ABHD5 may regulate the cellular storage of triacylglycerol through activation of the phospholipase PNPLA2. It is involved in keratinocyte differentiation. ABHD5 is an evolutionarily conserved protein that acts as a potent activator of Atgl. Abhd5 is expressed in several tissues that lack Plin , raising the possibility that this co-activator might interact with additional PAT proteins. Abhd5 and Mldp are highly colocalized on individual lipid droplets.(PMID:19064991) Defects in ABHD5 are the cause of Chanarin-Dorfman syndrome (CDS).

Lagerung

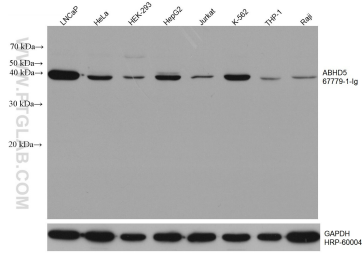
Lagerungsbedingungen:
Bei -20°C lagern. Nach dem Versand ein Jahr lang stabil

Lagerungspuffer:
PBS mit 0.02% Natriumazid und 50% Glycerin pH 7.3.

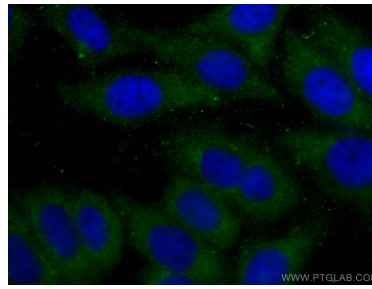
Aliquotieren ist nicht notwendig bei -20°C Lagerung

***** 20ul-Größen enthalten 0.1% BSA**

Ausgewählte Validierungsdaten



Various lysates were subjected to SDS PAGE followed by western blot with 67779-1-Ig (ABHD5 antibody) at dilution of 1:3000 incubated at room temperature for 1.5 hours. The membrane was stripped and reblotted with HRP-conjugated GAPDH Monoclonal antibody (HRP-60004) as loading control.



Immunofluorescent analysis of (-20°C Ethanol) fixed HepG2 cells using ABHD5 antibody (67779-1-Ig, Clone: 2B12C2) at dilution of 1:400 and CoraLite®488-Conjugated AffiniPure Goat Anti-Mouse IgG(H+L).