

Nur für Forschungszwecke

PPP2R2A/B/C Monoklonaler Antikörper



Katalog-Nr.: 67783-1-Ig **1 Publikationen**

Allgemeine Informationen

Katalog-Nr.: 67783-1-Ig	GenBank-Zugangsnummer: BC031790	Reinigungsmethode: Protein-G-Reinigung
Größe: 150ul, Konzentration: 1000 µg/ml von 5521 Nanodrop;	GeneID (NCBI): 5521	CloneNo.: 2E1D5
Wirt: Maus	Vollständiger Name: protein phosphatase 2 (formerly 2A), regulatory subunit B, beta isoform	Empfohlene Verdünnungen: WB 1:1000-1:6000 IHC 1:50-1:500
Isotyp: IgG1	Berechnete Masse: 443 aa, 52 kDa	
Immunogen Katalognummer: AG30774	Beobachtete Masse: 52 kDa	

Anwendungen

Geprüfte Anwendungen:

IHC, WB, ELISA

In Publikationen genannte Anwendungen:

WB

Getestete Reaktivität:

Hausschwein, Human, Kaninchen, Maus, Ratte

Zitierte Arten:

Human

Hinweis-IHC: Antigendemaskierung mit TE-Puffer pH 9,0 empfohlen. (*) Wahlweise kann die Antigendemaskierung auch mit Citratpuffer pH 6,0 erfolgen.

Positivkontrollen:

WB: HepG2-Zellen, Hausschwein-Hirngewebe, HeLa-Zellen, Jurkat-Zellen, K-562-Zellen, Kaninchenhirngewebe, LNCaP-Zellen, Maushirngewebe, Rattenhirngewebe

IHC: Maushirngewebe, Maus-Cerebellum-Gewebe

Hintergrundinformationen

The PPP2R2B gene encodes a deduced 443 amino acid protein of approximately 52 kDa, which is a brain-specific regulatory subunit B of protein phosphatase 2. PPP2R2B is a Subunit of PP2A, a highly conserved constitutive enzyme (PMID:11719278). PPP2R2B (Bβ) is an important regulator of protein phosphatase 2A (PP2A) activity in the brain. Through differential promoter usage and alternative splicing, two major isoforms Bβ1 and Bβ2 with divergent sub-cellular targeting N termini are produced. Bβ plays an important role in neuronal survival. It has 5 isoforms produced by alternative splicing. This antibody can recognize PPP2R2A, PPP2R2B, and PPP2R2C due to the immunogen of PPP2R2B having high homology with PPP2R2A and PPP2R2C.

Bemerkenswerte Veröffentlichungen

Verfasser	Pubmed ID	Journal	Anwendung
Jiao Li	35441157	MedComm (2020)	WB

Lagerung

Lagerungsbedingungen:

Bei -20°C lagern. Nach dem Versand ein Jahr lang stabil

Lagerungspuffer:

PBS mit 0.02% Natriumazid und 50% Glycerin pH 7.3.

Aliquotieren ist nicht notwendig bei -20°C Lagerung

***** 20ul-Größen enthalten 0.1% BSA**

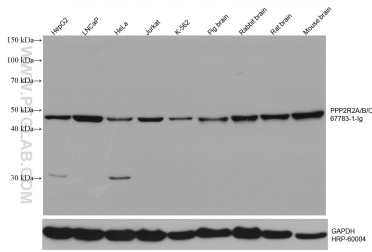
For technical support and original validation data for this product please contact:

T: 1 (888) 4PTGLAB (1-888-478-4522) (toll free in USA), or 1(312) 455-8498 (outside USA)

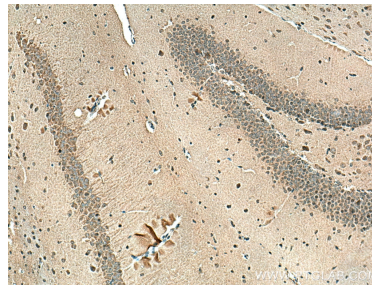
E: proteintech@ptglab.com
W: ptglab.com

This product is exclusively available under Proteintech Group brand and is not available to purchase from any other manufacturer.

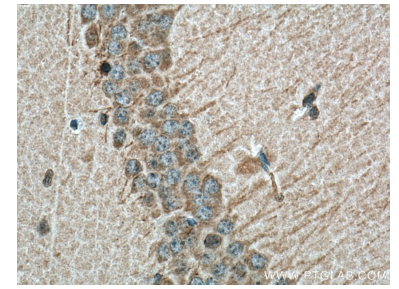
Ausgewählte Validierungsdaten



Various lysates were subjected to SDS PAGE followed by western blot with 67783-1-Ig (PPP2R2A/B/C antibody) at dilution of 1:3000 incubated at room temperature for 1.5 hours. The membrane was stripped and reblotted with HRP-conjugated GAPDH Monoclonal antibody (HRP-60004) as loading control.



Immunohistochemical analysis of paraffin-embedded mouse brain tissue slide using 67783-1-Ig (PPP2R2A/B/C antibody) at dilution of 1:200 (under 10x lens). Heat mediated antigen retrieval with Tris-EDTA buffer (pH 9.0).



Immunohistochemical analysis of paraffin-embedded mouse brain tissue slide using 67783-1-Ig (PPP2R2A/B/C antibody) at dilution of 1:200 (under 40x lens). Heat mediated antigen retrieval with Tris-EDTA buffer (pH 9.0).