

Nur für Forschungszwecke

# citrate synthase Monoklonaler Antikörper

Katalog-Nr.:67784-1-Ig



## Allgemeine Informationen

<b>Katalog-Nr.:</b> 67784-1-Ig	<b>GenBank-Zugangsnummer:</b> BC010106	<b>Reinigungsmethode:</b> Protein-G-Reinigung
<b>Größe:</b> 150ul, Konzentration: 1000 µg/ml von1431 Nanodrop;	<b>GeneID (NCBI):</b> 1431	<b>CloneNo.:</b> 2F9G6
<b>Wirt:</b> Maus	<b>Vollständiger Name:</b> citrate synthase	<b>Empfohlene Verdünnungen:</b> WB 1:2000-1:10000 IHC 1:500-1:2000 IF 1:400-1:1600
<b>Isotyp:</b> IgG1	<b>Berechnete Masse:</b> 466 aa, 52 kDa	
<b>Immunogen Katalognummer:</b> AG9255		

## Anwendungen

### Geprüfte Anwendungen:

IF, IHC, WB, ELISA

### Getestete Reaktivität:

Human, Maus, Ratte

**Hinweis-IHC: Antigendemaskierung mit TE-Puffer pH 9,0 empfohlen. (\*) Wahlweise kann die Antigendemaskierung auch mit Citratpuffer pH 6,0 erfolgen.**

### Positivkontrollen:

WB: LNCaP-Zellen, HEK-293-Zellen, HeLa-Zellen, HepG2-Zellen, Jurkat-Zellen, K-562-Zellen, NIH/3T3-Zellen, PC-12-Zellen

IHC: humanes Mammakarzinomgewebe,

IF: MCF-7-Zellen,

## Hintergrundinformationen

Citrate synthase (CS), the first and rate-limiting enzyme of the tricarboxylic acid cycle, plays a key role in regulating energy generation of mitochondrial respiration(PMID:19479947).It belongs to the citrate synthase family. The deduced 466-amino acid protein contains an N-terminal mitochondrial targeting sequence and a motif highly conserved in citrate synthases(PMID:12549038). It can exist as a dimer(PMID:8749851). Northern blot analysis detected no CS expression in thymus and small intestine(PMID:12549038). This antibody is specific to CS.

## Lagerung

### Lagerungsbedingungen:

Bei -20°C lagern. Nach dem Versand ein Jahr lang stabil

### Lagerungspuffer:

PBS mit 0.02% Natriumazid und 50% Glycerin pH 7.3.

Aliquotieren ist nicht notwendig bei -20°C Lagerung

\*\*\* 20ul-Größen enthalten 0.1% BSA

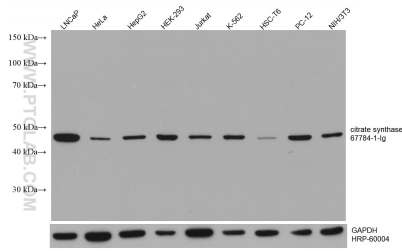
For technical support and original validation data for this product please contact:

T: 1 (888) 4PTGLAB (1-888-478-4522) (toll free in USA), or 1(312) 455-8498 (outside USA)

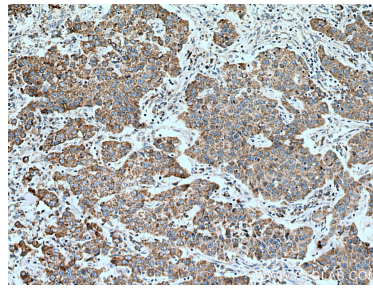
E: proteintech@ptglab.com  
W: ptglab.com

This product is exclusively available under Proteintech Group brand and is not available to purchase from any other manufacturer.

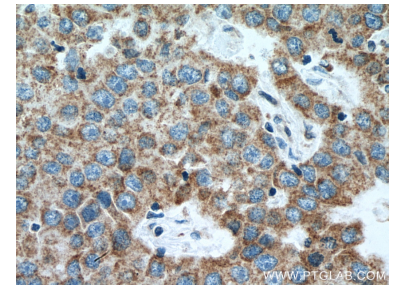
## Ausgewählte Validierungsdaten



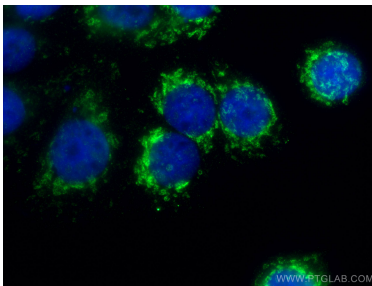
LNCaP cells were subjected to SDS PAGE followed by western blot with 67784-1-Ig (citrate synthase antibody) at dilution of 1:5000 incubated at room temperature for 1.5 hours. The membrane was stripped and reblotted with HRP-conjugated GAPDH Monoclonal antibody (HRP-60004) as loading control.



Immunohistochemical analysis of paraffin-embedded human breast cancer tissue slide using 67784-1-Ig (citrate synthase antibody) at dilution of 1:1000 (under 10x lens). Heat mediated antigen retrieval with Tris-EDTA buffer (pH 9.0).



Immunohistochemical analysis of paraffin-embedded human breast cancer tissue slide using 67784-1-Ig (citrate synthase antibody) at dilution of 1:1000 (under 40x lens). Heat mediated antigen retrieval with Tris-EDTA buffer (pH 9.0).



Immunofluorescent analysis of (4% PFA) fixed MCF-7 cells using citrate synthase antibody (67784-1-Ig, Clone: 2F9G6) at dilution of 1:800 and CoraLite@488-Conjugated AffiniPure Goat Anti-Mouse IgG(H+L). DAPI (blue).