

Nur für Forschungszwecke

TWF1 Monoklonaler Antikörper

Katalog-Nr.:67796-1-Ig



Allgemeine Informationen

Katalog-Nr.: 67796-1-Ig	GenBank-Zugangsnummer: BC022344	Reinigungsmethode: Protein-A-Reinigung
Größe: 150ul , Konzentration: 1000 µg/ml von5756 Nanodrop;	GeneID (NCBI): 5756	CloneNo.: 2F10F11
Wirt: Maus	Vollständiger Name: twinfilin, actin-binding protein, homolog 1 (Drosophila)	Empfohlene Verdünnungen: WB 1:2000-1:20000
Isotyp: IgG2a	Berechnete Masse: 368 aa, 42 kDa	
Immunogen Katalognummer: AG28630	Beobachtete Masse: 36-38 kDa	

Anwendungen

Geprüfte Anwendungen: WB, ELISA	Positivkontrollen: WB : LNCaP-Zellen, HEK-293-Zellen, HeLa-Zellen, HepG2-Zellen, Jurkat-Zellen
Getestete Reaktivität: Human	

Hintergrundinformationen

Twinfilin-1 (TWF1) is an actin-binding protein implicated in cell motility, invasion and migration. Its expression is linked to sensitivity to drugs and cancer progression. Overexpression of TWF1 has been reported in various cancers, including breast cancer and lung cancer.

Lagerung

Lagerungsbedingungen:
Bei -20°C lagern. Nach dem Versand ein Jahr lang stabil
Lagerungspuffer:
PBS mit 0.02% Natriumazid und 50% Glycerin pH 7.3.
Aliquotieren ist nicht notwendig bei -20°C Lagerung

*** 20ul-Größen enthalten 0.1% BSA

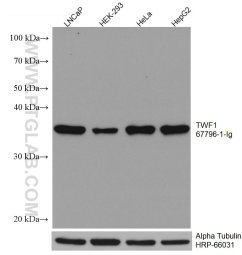
For technical support and original validation data for this product please contact:

T: 1 (888) 4PTGLAB (1-888-478-4522) (toll free
in USA), or 1(312) 455-8498 (outside USA)

E: proteintech@ptglab.com
W: ptglab.com

This product is exclusively available under Proteintech Group brand and is not available to purchase from any other manufacturer.

Ausgewählte Validierungsdaten



Various lysates were subjected to SDS PAGE followed by western blot with 67796-1-Ig (TWF1 antibody) at dilution of 1:10000 incubated at room temperature for 1.5 hours. The membrane was stripped and reblotted with HRP-conjugated Alpha Tubulin Monoclonal antibody (HRP-66031) as loading control.