

Nur für Forschungszwecke

# MFG-E8 Monoklonaler Antikörper

Katalog-Nr.:67797-1-Ig



## Allgemeine Informationen

<b>Katalog-Nr.:</b> 67797-1-Ig	<b>GenBank-Zugangsnummer:</b> BC003610	<b>Reinigungsmethode:</b> Protein-A-Reinigung
<b>Größe:</b> 150ul , Konzentration: 1000 µg/ml von4240 Nanodrop;	<b>GeneID (NCBI):</b> 4240	<b>CloneNo.:</b> 1A1A9
<b>Wirt:</b> Maus	<b>Vollständiger Name:</b> milk fat globule-EGF factor 8 protein	<b>Empfohlene Verdünnungen:</b> WB 1:5000-1:50000 IHC 1:4000-1:16000
<b>Isotyp:</b> IgG2b	<b>Berechnete Masse:</b> 43 kDa	
<b>Immunogen Katalognummer:</b> AG30666	<b>Beobachtete Masse:</b> 43 kDa	

## Anwendungen

**Geprüfte Anwendungen:**  
FC, IHC, WB, ELISA

**Getestete Reaktivität:**  
Human

**Hinweis-IHC: Antigenmaskierung mit TE-Puffer pH 9,0 empfohlen. (\*) Wahlweise kann die Antigenmaskierung auch mit Citratpuffer pH 6,0 erfolgen.**

**Positivkontrollen:**

**WB :** human milk, humanes Plazenta-Gewebe

**IHC :** humanes Plazenta-Gewebe,

## Hintergrundinformationen

Milk fat globule-epidermal growth factor-factor 8 (MFG-E8), also known as lactadherin, is a multifunctional secreted glycoprotein exhibiting versatile functions in cell physiology affecting health and diseases. It plays roles in clearance of apoptotic cells, anti-inflammatory, wound healing, arterial remodeling, angiogenesis, enhancing tumorigenicity and cancer metastasis (PMID: 23972256). MFG-E8 consists of two-repeated EGF-like domains, a mucin-like domain and two-repeated discoidin-like domains (C-domains), and contains an integrin-binding motif (RGD sequence) in the EGF-like domain (PMID: 11856354). It shows ubiquitous pattern of expression in various types of cells and tissues. Altered expression of MFG-E8 causes disruptions of homeostasis and is correlated with a number of diseases (PMID: 27429513).

## Lagerung

**Lagerungsbedingungen:**

Bei -20°C lagern.

**Lagerungspuffer:**

PBS mit 0.02% Natriumazid und 50% Glycerin pH 7.3.

Aliquotieren ist nicht notwendig bei -20°C Lagerung

\*\*\* 20ul-Größen enthalten 0.1% BSA

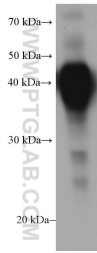
For technical support and original validation data for this product please contact:

T: 1 (888) 4PTGLAB (1-888-478-4522) (toll free in USA), or 1(312) 455-8498 (outside USA)

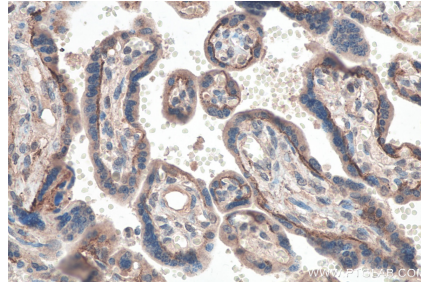
E: proteintech@ptglab.com  
W: ptglab.com

This product is exclusively available under Proteintech Group brand and is not available to purchase from any other manufacturer.

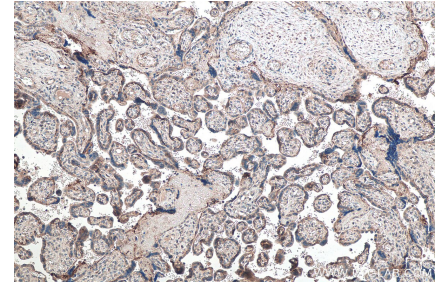
## Ausgewählte Validierungsdaten



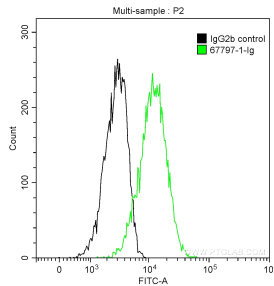
human milk were subjected to SDS PAGE followed by western blot with 67797-1-Ig (MFG-E8 antibody) at dilution of 1:20000 incubated at room temperature for 1.5 hours.



Immunohistochemical analysis of paraffin-embedded human placenta tissue slide using 67797-1-Ig (MFG-E8 antibody) at dilution of 1:8000 (under 40x lens). Heat mediated antigen retrieval with Tris-EDTA buffer (pH 9.0).



Immunohistochemical analysis of paraffin-embedded human placenta tissue slide using 67797-1-Ig (MFG-E8 antibody) at dilution of 1:8000 (under 10x lens). Heat mediated antigen retrieval with Tris-EDTA buffer (pH 9.0).



1X10<sup>6</sup> MDA-MB-231 cells were stained with 0.2 ug Anti-Human MFG-E8 (67797-1-Ig, Clone: 1A1A9) and CoraLite®488-Conjugated AffiniPure Goat Anti-Mouse IgG(H+L) at dilution 1:1000 (green), or stained with 0.2 ug isotype control and CoraLite®488-Conjugated AffiniPure Goat Anti-Mouse IgG(H+L) at dilution 1:1000 (black). Cells were fixed with 90% MeOH.