

Nur für Forschungszwecke

SMCR7L Monoklonaler Antikörper

Katalog-Nr.:67808-1-Ig



Allgemeine Informationen

| | | |
|---|---|---|
| Katalog-Nr.: 67808-1-Ig | GenBank-Zugangsnummer: BC002587 | Reinigungsmethode: Protein-A-Reinigung |
| Größe: 150ul, Konzentration: 1000 µg/ml von54471 Nanodrop; | GeneID (NCBI): von54471 | CloneNo.: 3B3G3 |
| Wirt: Maus | Vollständiger Name: Smith-Magenis syndrome chromosome region, candidate 7-like | Empfohlene Verdünnungen: WB 1:5000-1:50000 IHC 1:250-1:1000 IF 1:50-1:500 |
| Isotyp: IgG2b | Berechnete Masse: 463 aa, 51 kDa | |
| Immunogen Katalognummer: AG13775 | Beobachtete Masse: 48-51 kDa | |

Anwendungen

Geprüfte Anwendungen:

IF, IHC, WB, ELISA

Getestete Reaktivität:

Human, Maus, Ratte

Hinweis-IHC: Antigendemaskierung mit TE-Puffer pH 9,0 empfohlen. (*) Wahlweise kann die Antigendemaskierung auch mit Citratpuffer pH 6,0 erfolgen.

Positivkontrollen:

WB : LNCaP-Zellen, 4T1-Zellen, HEK-293-Zellen, HeLa-Zellen, Jurkat-Zellen, K-562-Zellen, NIH/3T3-Zellen, PC-12-Zellen

IHC : Maushodengewebe,

IF : Maushodengewebe,

Hintergrundinformationen

Human SMCR7L gene encodes, MID51, the mitochondrial dynamic protein of 51 kDa (also called mitochondrial elongation factor 1, MIEF1). MID51 is a single-pass membrane protein anchored to the mitochondrial outer membrane and regulates mitochondrial morphology. Mitochondrial morphology is controlled by two opposing processes: fusion and fission. Elevated MID51 levels induce extensive mitochondrial fusion, whereas depletion of MID51 causes mitochondrial fragmentation. MID51 interacts with and recruits Drp1 to mitochondria, suggesting a critical role of MID51 in regulation of mitochondrial fusion-fission machinery in vertebrates.

Lagerung

Lagerungsbedingungen:

Bei -20°C lagern. Nach dem Versand ein Jahr lang stabil

Lagerungspuffer:

PBS with 0.1% sodium azide and 50% glycerol pH 7.3.

Aliquotieren ist nicht notwendig bei -20°C Lagerung

*** 20ul-Größen enthalten 0.1% BSA

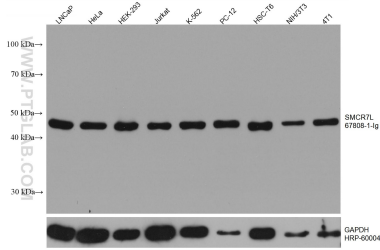
For technical support and original validation data for this product please contact:

T: 1 (888) 4PTGLAB (1-888-478-4522) (toll free in USA), or 1(312) 455-8498 (outside USA)

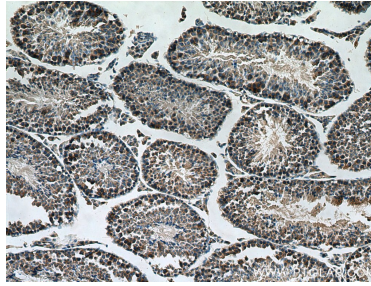
E: proteintech@ptglab.com
W: ptglab.com

This product is exclusively available under Proteintech Group brand and is not available to purchase from any other manufacturer.

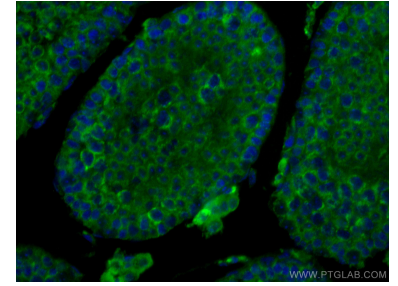
Ausgewählte Validierungsdaten



Various lysates were subjected to SDS PAGE followed by western blot with 67808-1-Ig (SMCR7L antibody) at dilution of 1:10000 incubated at room temperature for 1.5 hours. The membrane was stripped and reblotted with HRP-conjugated GAPDH Monoclonal antibody (HRP-60004) as loading control.



Immunohistochemical analysis of paraffin-embedded mouse testis tissue slide using 67808-1-Ig (SMCR7L antibody) at dilution of 1:500 (under 10x lens). Heat mediated antigen retrieval with Tris-EDTA buffer (pH 9.0).



Immunofluorescent analysis of (4% PFA) fixed mouse testis tissue using SMCR7L antibody (67808-1-Ig, Clone: 3B3G3) at dilution of 1:200 and CoraLite®488-Conjugated AffiniPure Goat Anti-Mouse IgG(H+L). DAPI (blue).