

Allgemeine Informationen

Katalog-Nr.: 67817-1-Ig	GenBank-Zugangsnummer: BC004427	Reinigungsmethode: Protein-G-Reinigung
Größe: 150ul , Konzentration: 1000 µg/ml von5688 Nanodrop und 475 µg/ml durch die Bradford-Methode mit BSA als Standard;	GeneID (NCBI): 15688	CloneNo.: 1F2C6
Wirt: Maus	Vollständiger Name: proteasome (prosome, macropain) subunit, alpha type, 7	Empfohlene Verdünnungen: WB 1:5000-1:50000 IHC 1:1000-1:4000 IF 1:200-1:800
Isotyp: IgG1	Berechnete Masse: 28 kDa	
Immunogen Katalognummer: AG7821	Beobachtete Masse: 28-30 kDa	

Anwendungen

Geprüfte Anwendungen:

IF, IHC, WB, ELISA

Getestete Reaktivität:

Human, Maus, Ratte

Hinweis-IHC: Antigenmaskierung mit TE-Puffer pH 9,0 empfohlen. (*) Wahlweise kann die Antigenmaskierung auch mit Citratpuffer pH 6,0 erfolgen.

Positivkontrollen:

WB : LNCaP-Zellen, 4T1-Zellen, HEK-293-Zellen, HeLa-Zellen, Jurkat-Zellen, K-562-Zellen, MCF-7-Zellen, NIH/3T3-Zellen, PC-12-Zellen

IHC : humanes Zervixkarzinomgewebe,

IF : HeLa-Zellen,

Hintergrundinformationen

PSMA7(Proteasome subunit alpha type-7) is also named HSPC and belongs to the peptidase T1A family. It is an α -type subunit of the 20S proteasome core complex and participates in degrading proteins through the ubiquitin-proteasome pathway (UPP) which plays an important role in the regulation of cell proliferation or cell cycle control, transcriptional regulation, immune and stress response, cell differentiation, and apoptosis(PMID: 19442227).

Lagerung

Lagerungsbedingungen:

Bei -20°C lagern. Nach dem Versand ein Jahr lang stabil

Lagerungspuffer:

PBS mit 0.02% Natriumazid und 50% Glycerin pH 7.3.

Aliquotieren ist nicht notwendig bei -20°C Lagerung

*** 20ul-Größen enthalten 0.1% BSA

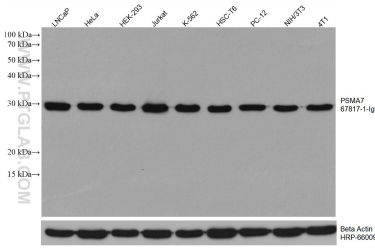
For technical support and original validation data for this product please contact:

T: 1 (888) 4PTGLAB (1-888-478-4522) (toll free in USA), or 1(312) 455-8498 (outside USA)

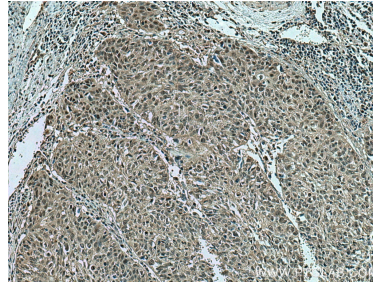
E: proteintech@ptglab.com
W: ptglab.com

This product is exclusively available under Proteintech Group brand and is not available to purchase from any other manufacturer.

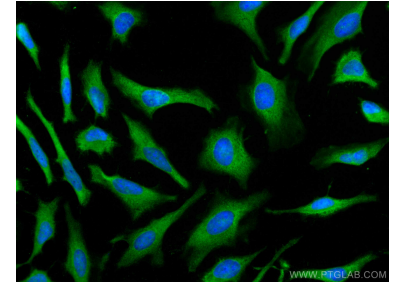
Ausgewählte Validierungsdaten



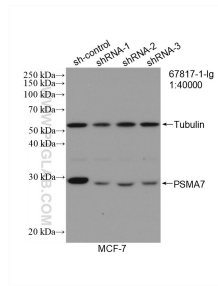
Various lysates were subjected to SDS PAGE followed by western blot with 67817-1-Ig (PSMA7 antibody) at dilution of 1:20000 incubated at room temperature for 1.5 hours. The membrane was stripped and reblotted with HRP-conjugated Beta Actin Monoclonal antibody (HRP-66009) as loading control.



Immunohistochemical analysis of paraffin-embedded human cervical cancer tissue slide using 67817-1-Ig (PSMA7 antibody) at dilution of 1:2000 (under 10x lens). Heat mediated antigen retrieval with Tris-EDTA buffer (pH 9.0).



Immunofluorescent analysis of (-20°C Methanol) fixed HeLa cells using PSMA7 antibody (67817-1-Ig, Clone: 1F2C6) at dilution of 1:400 and CoraLite®488-Conjugated AffiniPure Goat Anti-Mouse IgG(H+L).



WB result of PSMA7 antibody (67817-1-Ig; 1:40000; incubated at room temperature for 1.5 hours) with sh-Control and sh-PSMA7 transfected MCF-7 cells.