

Nur für Forschungszwecke

# LMCD1 Monoklonaler Antikörper

Katalog-Nr.:67834-1-Ig



## Allgemeine Informationen

|  |   |  |
|--|---|--|
| <b>Katalog-Nr.:</b><br>67834-1-Ig  | <b>GenBank-Zugangsnummer:</b><br>BC000646                     | <b>Reinigungsmethode:</b><br>Protein-G-Reinigung   |
| <b>Größe:</b><br>150ul , Konzentration: 1000 µg/ml von29995<br>Nanodrop; | <b>GeneID (NCBI):</b><br>2A7B3                                | <b>CloneNo.:</b><br>2A7B3  |
| <b>Wirt:</b><br>Maus   | <b>Vollständiger Name:</b><br>LIM and cysteine-rich domains 1 | <b>Empfohlene Verdünnungen:</b><br>WB 1:5000-1:50000<br>IHC 1:250-1:1000<br>IF 1:200-1:800 |
| <b>Isotyp:</b><br>IgG1   | <b>Berechnete Masse:</b><br>41 kDa                            |  |
| <b>Immunogen Katalognummer:</b><br>AG28331                               | <b>Beobachtete Masse:</b><br>~40 kDa                          |  |

## Anwendungen

### Geprüfte Anwendungen:

IF, IHC, WB, ELISA

### Getestete Reaktivität:

Human, Maus, Ratte

**Hinweis-IHC: Antigendemaskierung mit TE-Puffer pH 9,0 empfohlen. (\*) Wahlweise kann die Antigendemaskierung auch mit Citratpuffer pH 6,0 erfolgen.**

### Positivkontrollen:

WB : U2OS-Zellen, humanes Plazenta-Gewebe

IHC : humanes Kolongewebe, humanes Kolonkarzinomgewebe, Maus-Skelettmuskelgewebe, Ratten-Skelettmuskelgewebe

IF : MCF-7-Zellen,

## Hintergrundinformationen

LIM and cysteine-rich domains-1 (LMCD1) is a member of the LIM protein family, which contains an N-terminal cysteine-rich region, two C-terminal LIM domains and a central PET (Prickle, Espinas, and Testin) domain. LMCD1 has been reported in cardiac tissues and lung acting as a transcriptional repressor for GATA6. The mutations of LMCD1 promote cell migration and tumor metastasis in hepatocellular carcinoma. (PMID: 31501411) It has calculated molecular weight around 41kDa.

## Lagerung

### Lagerungsbedingungen:

Bei -20°C lagern.

### Lagerungspuffer:

PBS mit 0.02% Natriumazid und 50% Glycerin pH 7.3.

Aliquotieren ist nicht notwendig bei -20°C Lagerung

\*\*\* 20ul-Größen enthalten 0.1% BSA

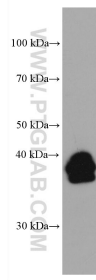
For technical support and original validation data for this product please contact:

T: 1 (888) 4PTGLAB (1-888-478-4522) (toll free in USA), or 1(312) 455-8498 (outside USA)

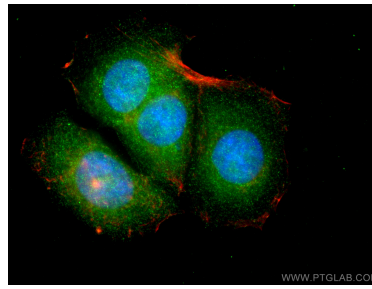
E: proteintech@ptglab.com  
W: ptglab.com

This product is exclusively available under Proteintech Group brand and is not available to purchase from any other manufacturer.

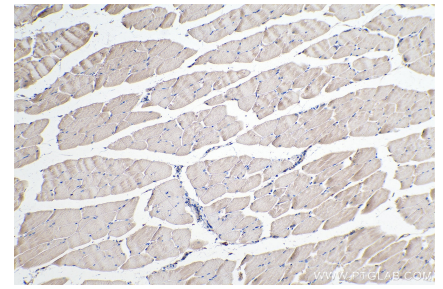
## Ausgewählte Validierungsdaten



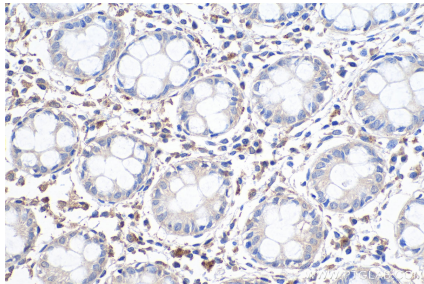
U2OS cells were subjected to SDS PAGE followed by western blot with 67834-1-Ig (LMCD1 antibody) at dilution of 1:20000 incubated at room temperature for 1.5 hours.



Immunofluorescent analysis of (4% PFA) fixed MCF-7 cells using LMCD1 antibody (67834-1-Ig, Clone: 2A7B3 ) at dilution of 1:400 and CoraLite@488-Conjugated AffiniPure Goat Anti-Mouse IgG(H+L), CL594-Phalloidin (red).



Immunohistochemical analysis of paraffin-embedded mouse skeletal muscle tissue slide using 67834-1-Ig (LMCD1 antibody) at dilution of 1:500 (under 10x lens). Heat mediated antigen retrieval with Tris-EDTA buffer (pH 9.0).



Immunohistochemical analysis of paraffin-embedded human colon tissue slide using 67834-1-Ig (LMCD1 antibody) at dilution of 1:500 (under 40x lens). Heat mediated antigen retrieval with Tris-EDTA buffer (pH 9.0).