

## Allgemeine Informationen

<b>Katalog-Nr.:</b> 67839-1-Ig	<b>GenBank-Zugangsnummer:</b> BC005189	<b>Reinigungsmethode:</b> Protein-A-Reinigung
<b>Größe:</b> 150ul , Konzentration: 1000 µg/ml von29079 Nanodrop und 448 µg/ml durch die Bradford-Methode mit BSA als Standard;	<b>GeneID (NCBI):</b> 29079	<b>CloneNo.:</b> 2E6F4
<b>Wirt:</b> Maus	<b>Vollständiger Name:</b> mediator complex subunit 4	<b>Empfohlene Verdünnungen:</b> WB 1:2000-1:10000 IHC 1:250-1:1000 IF 1:200-1:800
<b>Isotyp:</b> IgG2a	<b>Berechnete Masse:</b> 270 aa, 30 kDa	
<b>Immunogen Katalognummer:</b> AG8562	<b>Beobachtete Masse:</b> ~36 kDa	

## Anwendungen

<b>Geprüfte Anwendungen:</b> IF, IHC, WB,ELISA	<b>Positivkontrollen:</b> WB : LNCaP-Zellen, Hela, HEK-293, Jurkat, K-562, HSC- T6, PC-12, NIH/3T3, 4T1 IHC : humanes Mammakarzinomgewebe, IF : HepG2-Zellen,
<b>Getestete Reaktivität:</b> Human, Maus, Ratte	
<b>Hinweis-IHC: Antigenmaskierung mit TE- Puffer pH 9,0 empfohlen. (*) Wahlweise kann die Antigenmaskierung auch mit Citratpuffer pH 6,0 erfolgen.</b>	

## Hintergrundinformationen

MED4 is a component of the Mediator complex, which is a coactivator involved in the regulated transcription of nearly all RNA polymerase II-dependent genes. Mediator functions as a bridge to convey information from gene-specific regulatory proteins to the basal RNA polymerase II transcription machinery. It also has an alternative name called "Activator-recruited cofactor 36 kDa component (ARC36)".

## Lagerung

**Lagerungsbedingungen:**  
Bei -20°C lagern.  
**Lagerungspuffer:**  
PBS mit 0.02% Natriumazid und 50% Glycerin pH 7.3.  
Aliquotieren ist nicht notwendig bei -20°C Lagerung

\*\*\* 20ul-Größen enthalten 0.1% BSA

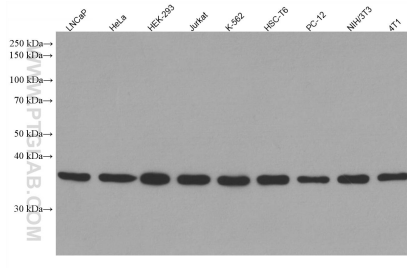
For technical support and original validation data for this product please contact:

T: 1 (888) 4PTGLAB (1-888-478-4522) (toll free  
in USA), or 1(312) 455-8498 (outside USA)

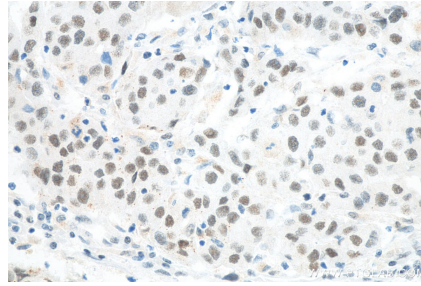
E: proteintech@ptglab.com  
W: ptglab.com

This product is exclusively available under Proteintech Group brand and is not available to purchase from any other manufacturer.

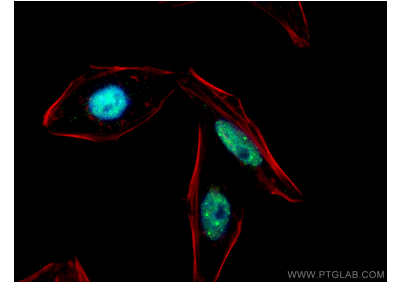
## Ausgewählte Validierungsdaten



Various lysates were subjected to SDS PAGE followed by western blot with 67839-1-Ig (MED4 antibody) at dilution of 1:5000 incubated at room temperature for 1.5 hours.



Immunohistochemical analysis of paraffin-embedded human breast cancer tissue slide using 67839-1-Ig (MED4 antibody) at dilution of 1:500 (under 40x lens). Heat mediated antigen retrieval with Tris-EDTA buffer (pH 9.0).



Immunofluorescent analysis of (4% PFA) fixed HepG2 cells using MED4 antibody (67839-1-Ig, Clone: 2E6F4) at dilution of 1:400 and Coralite® 488-Conjugated AffiniPure Goat Anti-Mouse IgG(H+L), CL594-Phalloidin (red). DAPI (Blue).