

Nur für Forschungszwecke

CIP2A Monoklonaler Antikörper

Katalog-Nr.:67843-1-Ig



Allgemeine Informationen

Katalog-Nr.: 67843-1-Ig	GenBank-Zugangsnummer: BC130564	Reinigungsmethode: Protein-G-Reinigung
Größe: 150ul, Konzentration: 1000 µg/ml von57650 Nanodrop;	GeneID (NCBI): 57650	CloneNo.: 2A3F3
Wirt: Maus	Vollständiger Name: KIAA1524	Empfohlene Verdünnungen: WB 1:5000-1:50000 IF 1:200-1:800
Isotyp: IgG1	Berechnete Masse: 905 aa, 102 kDa	
Immunogen Katalognummer: AG19598	Beobachtete Masse: 102 kDa	

Anwendungen

Geprüfte Anwendungen: IF, WB,ELISA	Positivkontrollen:
Getestete Reaktivität: Human, Ratte	WB: LNCaP-Zellen, HEK-293-Zellen, HeLa-Zellen, Jurkat-Zellen, K-562-Zellen, PC-12-Zellen
	IF: HeLa-Zellen,

Hintergrundinformationen

Cancerous inhibitor of protein phosphatase 2A (CIP2A) was originally identified as a cellular protein phosphatase 2A (PP2A) inhibitor, and has been shown to control oncogenic cellular signals by suppressing the tumor suppressor PP2A. CIP2A overexpression has been found in several human malignancies including breast cancer, hepatocellular carcinoma, gastric cancer, head and neck cancer, colon cancer, prostate cancer and non-small cell lung cancer. CIP2A is a 83-102 kDa cytoplasmic protein. (PMID: 26824320, PMID: 25458953, PMID: 29720672)

Lagerung

Lagerungsbedingungen:
Bei -20°C lagern.
Lagerungspuffer:
PBS mit 0.02% Natriumazid und 50% Glycerin pH 7.3.
Aliquotieren ist nicht notwendig bei -20°C Lagerung

*** 20ul-Größen enthalten 0.1% BSA

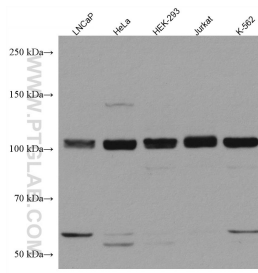
For technical support and original validation data for this product please contact:

T: 1 (888) 4PTGLAB (1-888-478-4522) (toll free
in USA), or 1(312) 455-8498 (outside USA)

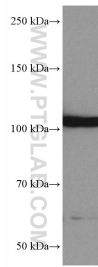
E: proteintech@ptglab.com
W: ptglab.com

This product is exclusively available under Proteintech Group brand and is not available to purchase from any other manufacturer.

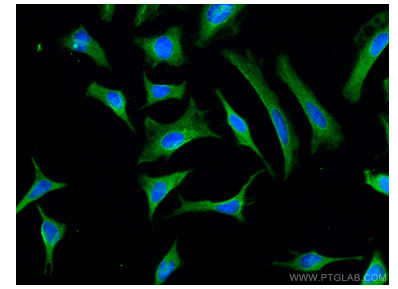
Ausgewählte Validierungsdaten



Various lysates were subjected to SDS PAGE followed by western blot with 67843-1-Ig (KIAA1524 antibody) at dilution of 1:10000 incubated at room temperature for 1.5 hours.



HSC-T6 cells were subjected to SDS PAGE followed by western blot with 67843-1-Ig (KIAA1524 antibody) at dilution of 1:10000 incubated at room temperature for 1.5 hours.



Immunofluorescent analysis of (-20°C Methanol) fixed HeLa cells using KIAA1524 antibody (67843-1-Ig, Clone: 2A3F3) at dilution of 1:400 and CoraLite®488-Conjugated AffiniPure Goat Anti-Mouse IgG(H+L).