

Nur für Forschungszwecke

PSMB1 Monoklonaler Antikörper

Katalog-Nr.:67847-1-Ig



Allgemeine Informationen

Katalog-Nr.: 67847-1-Ig	GenBank-Zugangsnummer: BC020807	Reinigungsmethode: Protein-G-Reinigung
Größe: 150ul, Konzentration: 1000 µg/ml von5689 Nanodrop;	GeneID (NCBI): 5689	CloneNo.: 1C7C5
Wirt: Maus	Vollständiger Name: proteasome (prosome, macropain) subunit, beta type, 1	Empfohlene Verdünnungen: WB 1:5000-1:50000 IHC 1:250-1:1000 IF 1:400-1:1600
Isotyp: IgG1	Berechnete Masse: 241 aa, 26 kDa	
Immunogen Katalognummer: AG30791	Beobachtete Masse: 25 kDa	

Anwendungen

Geprüfte Anwendungen:

IF, IHC, WB, ELISA

Getestete Reaktivität:

Human

Hinweis-IHC: Antigendemaskierung mit TE-Puffer pH 9,0 empfohlen. (*) Wahlweise kann die Antigendemaskierung auch mit Citratpuffer pH 6,0 erfolgen.

Positivkontrollen:

WB : Jurkat-Zellen, K-562-Zellen, THP-1-Zellen, U-937-Zellen

IHC : humanes Leberkarzinomgewebe,

IF : U2OS-Zellen,

Hintergrundinformationen

PSMB1(Proteasome subunit beta type-1) is also named as PSC5 and belongs to the peptidase T1B family. The proteasome is a multicatalytic proteinase complex which is characterized by its ability to cleave peptides with Arg, Phe, Tyr, Leu, and Glu adjacent to the leaving group at neutral or slightly basic pH. The gene encodes a 241 amino acid protein with a 28 amino acid propeptide and two glycosylation sites.

Lagerung

Lagerungsbedingungen:

Bei -20°C lagern. Nach dem Versand ein Jahr lang stabil

Lagerungspuffer:

PBS mit 0.02% Natriumazid und 50% Glycerin pH 7.3.

Aliquotieren ist nicht notwendig bei -20°C Lagerung

*** 20ul-Größen enthalten 0.1% BSA

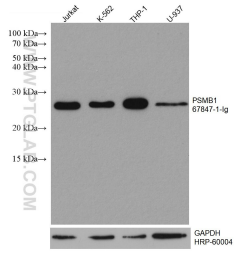
For technical support and original validation data for this product please contact:

T: 1 (888) 4PTGLAB (1-888-478-4522) (toll free in USA), or 1(312) 455-8498 (outside USA)

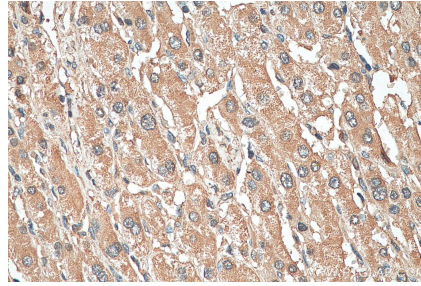
E: proteintech@ptglab.com
W: ptglab.com

This product is exclusively available under Proteintech Group brand and is not available to purchase from any other manufacturer.

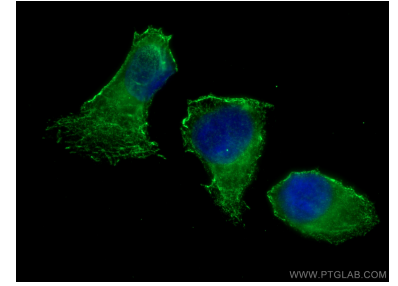
Ausgewählte Validierungsdaten



Various lysates were subjected to SDS PAGE followed by western blot with 67847-1-Ig (PSMB1 antibody) at dilution of 1:10000 incubated at room temperature for 1.5 hours. The membrane was stripped and reblotted with HRP-conjugated GAPDH Monoclonal antibody (HRP-60004) as loading control.



Immunohistochemical analysis of paraffin-embedded human liver cancer tissue slide using 67847-1-Ig (PSMB1 antibody) at dilution of 1:500 (under 40x lens). Heat mediated antigen retrieval with Tris-EDTA buffer (pH 9.0).



Immunofluorescent analysis of (-20°C Methanol) fixed U2OS cells using PSMB1 antibody (67847-1-Ig, Clone: 1C7C5) at dilution of 1:800 and CoraLite®488-Conjugated AffiniPure Goat Anti-Mouse IgG(H+L).