

Nur für Forschungszwecke

RUVBL2 Monoklonaler Antikörper

Katalog-Nr.:67851-1-Ig



Allgemeine Informationen

| | | |
|--|---|--|
| Katalog-Nr.: 67851-1-Ig | GenBank-Zugangsnummer: BC000428 | Reinigungsmethode: Protein-A-Reinigung |
| Größe: 150ul , Konzentration: 1000 µg/ml von10856 Nanodrop; | GeneID (NCBI): 150856 | CloneNo.: 1A1A4 |
| Wirt: Maus | Vollständiger Name: RuvB-like 2 (E. coli) | Empfohlene Verdünnungen: WB 1:5000-1:50000 IHC 1:500-1:2000 IF 1:200-1:800 |
| Isotyp: IgG2b | Berechnete Masse: 51 kDa | |
| Immunogen Katalognummer: AG0253 | Beobachtete Masse: 51 kDa | |

Anwendungen

Geprüfte Anwendungen:

IF, IHC, WB, ELISA

Getestete Reaktivität:

Human, Maus, Ratte

Hinweis-IHC: Antigendemaskierung mit TE-Puffer pH 9,0 empfohlen. (*) Wahlweise kann die Antigendemaskierung auch mit Citratpuffer pH 6,0 erfolgen.

Positivkontrollen:

WB: A549-Zellen, A431-Zellen, HeLa-Zellen, Jurkat-Zellen, K-562-Zellen, Neuro-2a-Zellen, NIH/3T3-Zellen, PC-12-Zellen

IHC: humanes Lungenkarzinomgewebe,

IF: HeLa-Zellen,

Hintergrundinformationen

RUVBL2 belongs to the conserved ATPases associated with various cellular activities (AAA+) protein subfamily, which is characterized by the presence of conserved Walker A and B motifs that are involved in ATP binding and hydrolysis. The AAA+ (ATPases associated with diverse cellular activities) ATPases, RUVBL1 and RUVBL2, were originally isolated as components of transcriptional complexes and shown to function in a number of different cellular processes, including transcriptional regulation, chromatin remodelling and DNA damage responses. (PMID: 31572066, PMID: 31138842)

Lagerung

Lagerungsbedingungen:

Bei -20°C lagern. Nach dem Versand ein Jahr lang stabil

Lagerungspuffer:

PBS mit 0.02% Natriumazid und 50% Glycerin pH 7.3.

Aliquotieren ist nicht notwendig bei -20°C Lagerung

*** 20ul-Größen enthalten 0.1% BSA

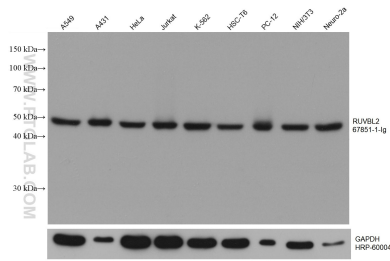
For technical support and original validation data for this product please contact:

T: 1 (888) 4PTGLAB (1-888-478-4522) (toll free in USA), or 1(312) 455-8498 (outside USA)

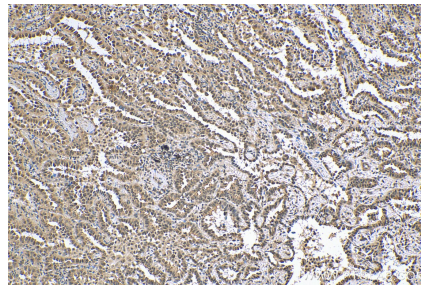
E: proteintech@ptglab.com
W: ptglab.com

This product is exclusively available under Proteintech Group brand and is not available to purchase from any other manufacturer.

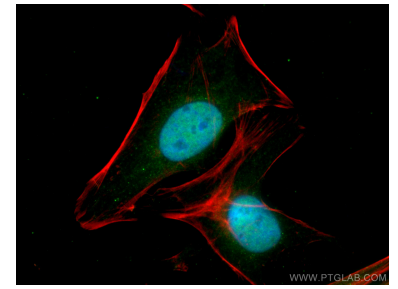
Ausgewählte Validierungsdaten



A549 cells were subjected to SDS PAGE followed by western blot with 67851-1-Ig (RUVBL2 antibody) at dilution of 1:10000 incubated at room temperature for 1.5 hours. The membrane was stripped and reblotted with HRP-conjugated GAPDH Monoclonal antibody (HRP-60004) as loading control.



Immunohistochemical analysis of paraffin-embedded human lung cancer tissue slide using 67851-1-Ig (RUVBL2 antibody) at dilution of 1:1000 (under 10x lens). Heat mediated antigen retrieval with Tris-EDTA buffer (pH 9.0).



Immunofluorescent analysis of (4% PFA) fixed HeLa cells using RUVBL2 antibody (67851-1-Ig, Clone: 1A1A4) at dilution of 1:400 and CoraLite®488-Conjugated AffiniPure Goat Anti-Mouse IgG(H+L), CL594-Phalloidin (red).