

Nur für Forschungszwecke

AFP Monoklonaler Antikörper

Katalog-Nr.:67852-1-Ig



Allgemeine Informationen

Katalog-Nr.: 67852-1-Ig	GenBank-Zugangsnummer: BC027881	Reinigungsmethode: Protein-A-Reinigung
Größe: 150ul , Konzentration: 1000 µg/ml von174 Nanodrop;	GeneID (NCBI): 174	CloneNo.: 4B3E4
Wirt: Maus	Vollständiger Name: alpha-fetoprotein	Empfohlene Verdünnungen: WB 1:5000-1:50000
Isotyp: IgG1	Berechnete Masse: 69 kDa	
Immunogen Katalognummer: AG6089	Beobachtete Masse: 68-72 kDa	

Anwendungen

Geprüfte Anwendungen: WB, ELISA	Positivkontrollen: WB : HepG2-Zellen, HuH-7-Zellen, humanes Hodengewebe, humanes Plazenta-Gewebe
Getestete Reaktivität: Human	

Hintergrundinformationen

AFP, also known as Alpha-fetoprotein, is a major plasma protein in the fetus and its concentration is very low in the adult (PubMed:24120489). AFP is considered a marker of hepatocyte precursors. AFP can be detected at abnormally high concentrations in hepatocellular carcinomas as well as in the plasma and ascitic fluid of adults with hepatoma. High AFP concentrations have been correlated with tumor cell growth, indicating that AFP can serve as a tumor marker (PubMed: 18669658).

Lagerung

Lagerungsbedingungen:
Bei -20°C lagern. Nach dem Versand ein Jahr lang stabil
Lagerungspuffer:
PBS mit 0.02% Natriumazid und 50% Glycerin pH 7.3.
Aliquotieren ist nicht notwendig bei -20°C Lagerung

*** 20ul-Größen enthalten 0.1% BSA

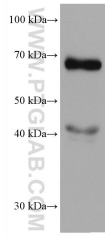
For technical support and original validation data for this product please contact:

T: 1 (888) 4PTGLAB (1-888-478-4522) (toll free
in USA), or 1(312) 455-8498 (outside USA)

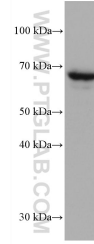
E: proteintech@ptglab.com
W: ptglab.com

This product is exclusively available under Proteintech Group brand and is not available to purchase from any other manufacturer.

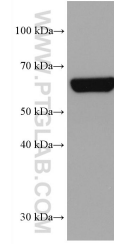
Ausgewählte Validierungsdaten



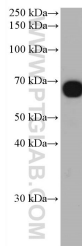
HuH-7 cells were subjected to SDS PAGE followed by western blot with 67852-1-Ig (AFP antibody) at dilution of 1:10000 incubated at room temperature for 1.5 hours.



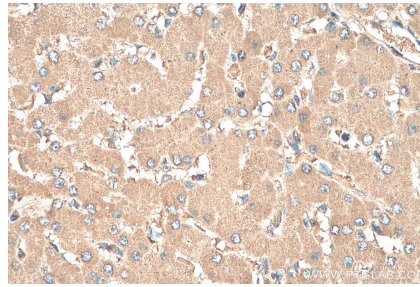
HepG2 cells were subjected to SDS PAGE followed by western blot with 67852-1-Ig (AFP antibody) at dilution of 1:10000 incubated at room temperature for 1.5 hours.



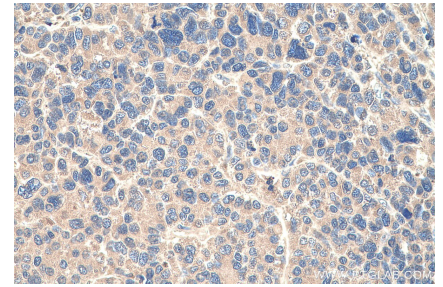
human testis tissue were subjected to SDS PAGE followed by western blot with 67852-1-Ig (AFP antibody) at dilution of 1:10000 incubated at room temperature for 1.5 hours.



human placenta tissue were subjected to SDS PAGE followed by western blot with 67852-1-Ig (AFP antibody) at dilution of 1:10000 incubated at room temperature for 1.5 hours.



Immunohistochemical analysis of paraffin-embedded human liver tissue slide using 67852-1-Ig (AFP antibody) at dilution of 1:1000 (under 40x lens). Heat mediated antigen retrieval with Tris-EDTA buffer (pH 9.0).



Immunohistochemical analysis of paraffin-embedded human liver cancer tissue slide using 67852-1-Ig (AFP antibody) at dilution of 1:1000 (under 40x lens). Heat mediated antigen retrieval with Tris-EDTA buffer (pH 9.0).