

Nur für Forschungszwecke

RCHY1 Monoklonaler Antikörper

Katalog-Nr.:67856-1-Ig

Vorgestelltes Produkt

1 Publikationen



Allgemeine Informationen

Katalog-Nr.: 67856-1-Ig	GenBank-Zugangsnummer: BC047393	Reinigungsmethode: Protein-A-Reinigung
Größe: 150ul, Konzentration: 1000 µg/ml von25898 Nanodrop;	GeneID (NCBI): Vollständiger Name: ring finger and CHY zinc finger domain containing 1	CloneNo.: 2C11C11
Wirt: Maus	Berechnete Masse: 261 aa, 30 kDa	Empfohlene Verdünnungen: WB 1:1000-1:6000 IHC 1:150-1:600 IF 1:400-1:1600
Isotyp: IgG2a	Immunogen Katalognummer: AG4942	

Anwendungen

Geprüfte Anwendungen: IF, IHC, WB, ELISA	Positivkontrollen: WB : HEK-293-Zellen, Daudi-Zellen, Jurkat-Zellen, K-562-Zellen, LNCaP-Zellen
In Publikationen genannte Anwendungen: WB	IHC : humanes Mammakarzinomgewebe,
Getestete Reaktivität: Human	IF : HeLa-Zellen, A549-Zellen
Zitierte Arten: Human	

Hinweis-IHC: Antigenmaskierung mit TE-Puffer pH 9,0 empfohlen. (*) Wahlweise kann die Antigenmaskierung auch mit Citratpuffer pH 6,0 erfolgen.

Hintergrundinformationen

Pirh2 is also named as RCHY1, ARNIP, CHIMP, PIRH2, RNF199, ZNF363 and has p53-induced ubiquitin-protein ligase activity, promoting p53 degradation. Pirh2 monoubiquitinates the translesion DNA polymerase POLH and contributes to the regulation of the cell cycle progression. This protein has 8 isoforms produced by alternative splicing and can exist as a monomer or homodimer.

Bemerkenswerte Veröffentlichungen

Verfasser	Pubmed ID	Journal	Anwendung
Sharanya Nag	36968077	iScience	WB

Lagerung

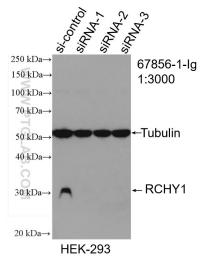
Lagerungsbedingungen:
Bei -20°C lagern. Nach dem Versand ein Jahr lang stabil
Lagerungspuffer:
PBS mit 0.02% Natriumazid und 50% Glycerin pH 7.3.
Aliquotieren ist nicht notwendig bei -20°C Lagerung

*** 20ul-Größen enthalten 0.1% BSA

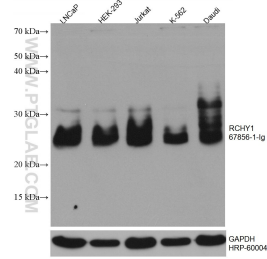
For technical support and original validation data for this product please contact:
T: 1 (888) 4PTGLAB (1-888-478-4522) (toll free in USA), or 1(312) 455-8498 (outside USA)
E: proteintech@ptglab.com
W: ptglab.com

This product is exclusively available under Proteintech Group brand and is not available to purchase from any other manufacturer.

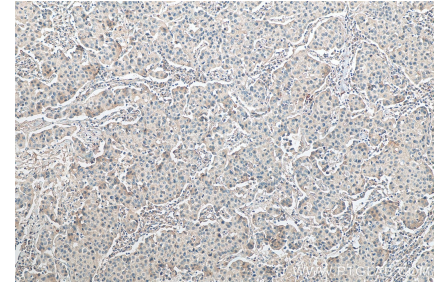
Ausgewählte Validierungsdaten



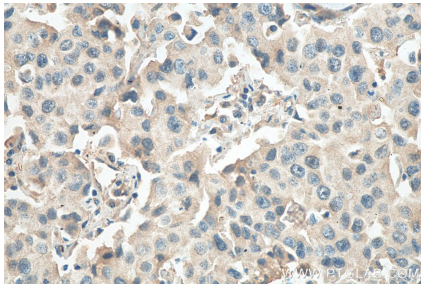
WB result of RCHY1 antibody (67856-1-Ig; 1:3000; incubated at room temperature for 1.5 hours) with sh-Control and sh-RCHY1 transfected HEK-293 cells.



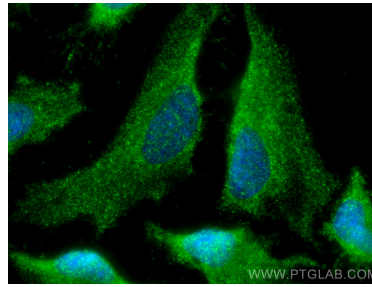
Various lysates were subjected to SDS PAGE followed by western blot with 67856-1-Ig (RCHY1 antibody) at dilution of 1:3000 incubated at room temperature for 1.5 hours. The membrane was stripped and reblotted with HRP-conjugated GAPDH Monoclonal antibody (HRP-60004) as loading control.



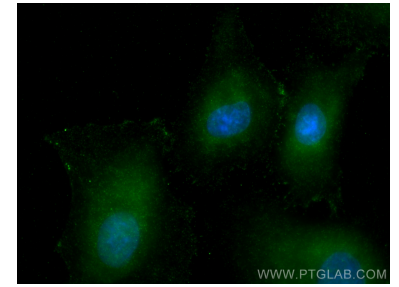
Immunohistochemical analysis of paraffin-embedded human breast cancer tissue slide using 67856-1-Ig (RCHY1 antibody) at dilution of 1:300 (under 10x lens). Heat mediated antigen retrieval with Tris-EDTA buffer (pH 9.0).



Immunohistochemical analysis of paraffin-embedded human breast cancer tissue slide using 67856-1-Ig (RCHY1 antibody) at dilution of 1:300 (under 40x lens). Heat mediated antigen retrieval with Tris-EDTA buffer (pH 9.0).



Immunofluorescent analysis of (-20°C Methanol) fixed HeLa cells using RCHY1 antibody (67856-1-Ig, Clone: 2C11C11) at dilution of 1:800 and CoraLite@488-Conjugated AffiniPure Goat Anti-Mouse IgG(H+L).



Immunofluorescent analysis of (-20°C Methanol) fixed A549 cells using RCHY1 antibody (67856-1-Ig, Clone: 2C11C11) at dilution of 1:800 and CoraLite@488-Conjugated AffiniPure Goat Anti-Mouse IgG(H+L).