

Nur für Forschungszwecke

# BCLAF1 Monoklonaler Antikörper

Katalog-Nr.:67860-1-Ig **1 Publikationen**



## Allgemeine Informationen

<b>Katalog-Nr.:</b> 67860-1-Ig	<b>GenBank-Zugangsnummer:</b> BC132780	<b>Reinigungsmethode:</b> Protein-G-Reinigung
<b>Größe:</b> 150ul, Konzentration: 1000 µg/ml von9774	<b>GeneID (NCBI):</b> 9774	<b>CloneNo.:</b> 1D6G7
<b>Nanodrop;</b>	<b>Vollständiger Name:</b> BCL2-associated transcription factor 1	<b>Empfohlene Verdünnungen:</b> WB 1:5000-1:50000
<b>Wirt:</b> Maus	<b>Berechnete Masse:</b> 920 aa, 106 kDa	<b>IF 1:400-1:1600</b>
<b>Isotyp:</b> IgG1	<b>Beobachtete Masse:</b> 145 kDa	
<b>Immunogen Katalognummer:</b> AG25210		

## Anwendungen

<b>Geprüfte Anwendungen:</b> FC, IF, WB, ELISA	<b>Positivkontrollen:</b>
<b>In Publikationen genannte Anwendungen:</b> WB	<b>WB:</b> LNCaP-Zellen, HEK-293-Zellen, HeLa-Zellen, Jurkat-Zellen, K-562-Zellen
<b>Getestete Reaktivität:</b> Human, Maus, Ratte	<b>IF:</b> HepG2-Zellen,
<b>Zitierte Arten:</b> Maus	

## Hintergrundinformationen

BCLF1, also named as Bcl-2-associated transcription factor 1, is a 920 amino acid protein, which interacts with Bcl-2 related proteins, EMD, with the adenovirus E1B 19 kDa protein and with DNA. BCLF1 as a death-promoting transcriptional repressor may be involved in cyclin-D1/CCND1 mRNA stability through the SNARP complex which associates with both the 3'end of the CCND1 gene and its mRNA. The calculated molecular weight of BCLF1 is a 110 kDa, but the modified BCLF1 protein is about 140-150 kDa.

## Bemerkenswerte Veröffentlichungen

Verfasser	Pubmed ID	Journal	Anwendung
Wenwen Liu	35786405	Autophagy	WB

## Lagerung

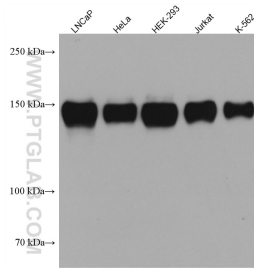
**Lagerungsbedingungen:**  
Bei -20°C lagern. Nach dem Versand ein Jahr lang stabil  
**Lagerungspuffer:**  
PBS mit 0.02% Natriumazid und 50% Glycerin pH 7.3.  
Aliquotieren ist nicht notwendig bei -20°C Lagerung

\*\*\* 20ul-Größen enthalten 0.1% BSA

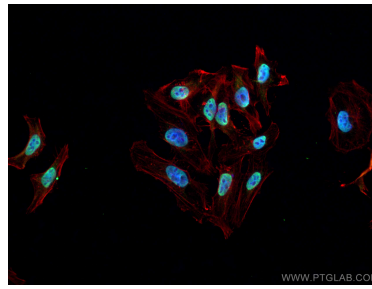
For technical support and original validation data for this product please contact:  
T: 1 (888) 4PTGLAB (1-888-478-4522) (toll free in USA), or 1(312) 455-8498 (outside USA)  
E: proteintech@ptglab.com  
W: ptglab.com

This product is exclusively available under Proteintech Group brand and is not available to purchase from any other manufacturer.

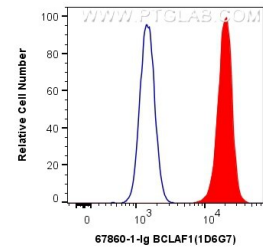
## Ausgewählte Validierungsdaten



Various lysates were subjected to SDS PAGE followed by western blot with 67860-1-Ig (BCLAF1 antibody) at dilution of 1:10000 incubated at room temperature for 1.5 hours.



Immunofluorescent analysis of (4% PFA) fixed HepG2 cells using BCLAF1 antibody (67860-1-Ig, Clone: 1D6G7 ) at dilution of 1:800 and CoraLite®488-Conjugated AffiniPure Goat Anti-Mouse IgG(H+L), CL594-Phalloidin (red).



1X10<sup>6</sup> HepG2 cells were intracellularly stained with 0.5 ug Anti-Human BCLAF1 (67860-1-Ig, Clone:1D6G7) (red) labeled with FlexAble CoraLite® Plus 555 Antibody Labeling Kit for Mouse IgG1 (KFA022), or 0.5 ug Control Antibody. Cells were fixed and permeabilized with Transcription Factor Staining Buffer Kit (PF00011).