

Nur für Forschungszwecke

# CSNK2B Monoklonaler Antikörper

Katalog-Nr.:67866-1-Ig

Vorgestelltes Produkt



## Allgemeine Informationen

<b>Katalog-Nr.:</b> 67866-1-Ig	<b>GenBank-Zugangsnummer:</b> BC112017	<b>Reinigungsmethode:</b> Protein-G-Reinigung
<b>Größe:</b> 150ul, Konzentration: 1000 µg/ml von1460 Nanodrop;	<b>GeneID (NCBI):</b> 150000000	<b>CloneNo.:</b> 1B5A6
<b>Wirt:</b> Maus	<b>Vollständiger Name:</b> casein kinase 2, beta polypeptide	<b>Empfohlene Verdünnungen:</b> WB 1:5000-1:20000 IHC 1:500-1:2000 IF 1:200-1:800
<b>Isotyp:</b> IgG1	<b>Berechnete Masse:</b> 215 aa, 25 kDa	
<b>Immunogen Katalognummer:</b> AG19180	<b>Beobachtete Masse:</b> 27 kDa	

## Anwendungen

### Geprüfte Anwendungen:

IF, IHC, WB, ELISA

### Getestete Reaktivität:

Hausschwein, Human, Maus, Ratte

**Hinweis-IHC: Antigendemaskierung mit TE-Puffer pH 9,0 empfohlen. (\*) Wahlweise kann die Antigendemaskierung auch mit Citratpuffer pH 6,0 erfolgen.**

### Positivkontrollen:

**WB:** A549-Zellen, Hausschwein-Hirngewebe, HeLa-Zellen, Jurkat-Zellen, LNCaP-Zellen, Maushirngewebe, MCF-7-Zellen, Rattenhirngewebe

**IHC:** humanes Mammakarzinomgewebe, humanes Kolonkarzinomgewebe

**IF:** HeLa-Zellen,

## Hintergrundinformationen

CSNK2B is a ubiquitous protein kinase which regulates metabolic pathways, signal transduction, transcription, translation, and replication. The enzyme is composed of three subunits, alpha, alpha prime and beta, which form a tetrameric holoenzyme. The alpha and alpha prime subunits are catalytic, while the beta subunit serves regulatory functions. The enzyme localizes to the endoplasmic reticulum and the Golgi apparatus. It participates in Wnt signaling, and plays a complex role in regulating the basal catalytic activity of the alpha subunit.

## Lagerung

### Lagerungsbedingungen:

Bei -20°C lagern. Nach dem Versand ein Jahr lang stabil

### Lagerungspuffer:

PBS mit 0.02% Natriumazid und 50% Glycerin pH 7.3.

Aliquotieren ist nicht notwendig bei -20°C Lagerung

\*\*\* 20ul-Größen enthalten 0.1% BSA

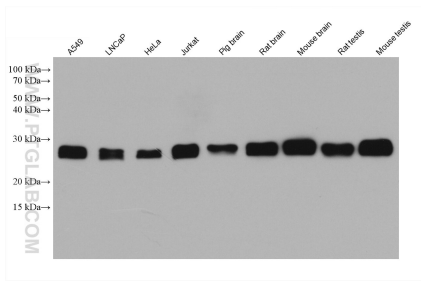
For technical support and original validation data for this product please contact:

T: 1 (888) 4PTGLAB (1-888-478-4522) (toll free in USA), or 1(312) 455-8498 (outside USA)

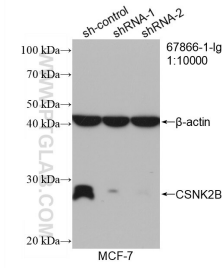
E: proteintech@ptglab.com  
W: ptglab.com

This product is exclusively available under Proteintech Group brand and is not available to purchase from any other manufacturer.

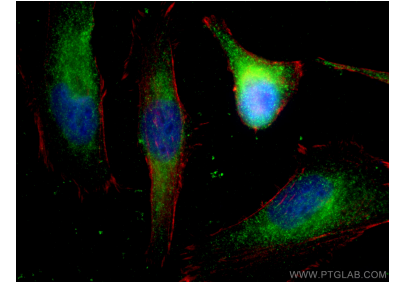
## Ausgewählte Validierungsdaten



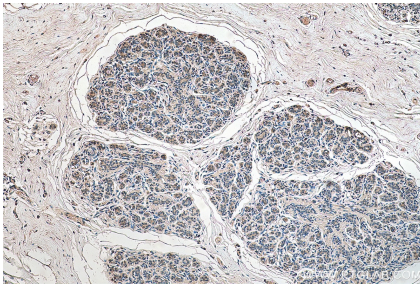
Various lysates were subjected to SDS PAGE followed by western blot with 67866-1-Ig (CSNK2B antibody) at dilution of 1:10000 incubated at room temperature for 1.5 hours.



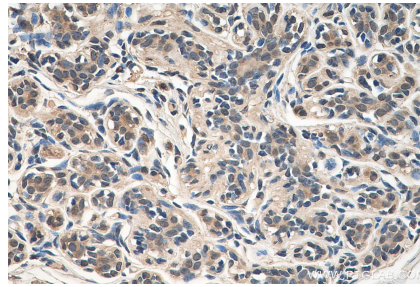
WB result of CSNK2B antibody (67866-1-Ig; 1:10000; incubated at room temperature for 1.5 hours) with sh-Control and sh-CSNK2B transfected MCF-7 cells.



Immunofluorescent analysis of (-20°C Ethanol) fixed HeLa cells using CSNK2B antibody (67866-1-Ig, Clone: 1B5A6) at dilution of 1:400 and CoraLite@488-Conjugated AffiniPure Goat Anti-Mouse IgG(H+L), CL594-Phalloidin (red).



Immunohistochemical analysis of paraffin-embedded human breast cancer tissue slide using 67866-1-Ig (CSNK2B antibody) at dilution of 1:1000 (under 10x lens). Heat mediated antigen retrieval with Tris-EDTA buffer (pH 9.0).



Immunohistochemical analysis of paraffin-embedded human breast cancer tissue slide using 67866-1-Ig (CSNK2B antibody) at dilution of 1:1000 (under 40x lens). Heat mediated antigen retrieval with Tris-EDTA buffer (pH 9.0).