

Nur für Forschungszwecke

GEMIN8 Monoklonaler Antikörper

Katalog-Nr.:67871-1-Ig



Allgemeine Informationen

Katalog-Nr.: 67871-1-Ig	GenBank-Zugangsnummer: BC003607	Reinigungsmethode: Protein-G-Reinigung
Größe: 150ul , Konzentration: 1000 µg/ml von54960 Nanodrop;	GeneID (NCBI): 54960	CloneNo.: 1A6B4
Wirt: Maus	Vollständiger Name: gem (nuclear organelle) associated protein 8	Empfohlene Verdünnungen: WB 1:2000-1:10000 IF 1:200-1:800
Isotyp: IgG1	Berechnete Masse: 29 kDa	
Immunogen Katalognummer: AG6774		

Anwendungen

Geprüfte Anwendungen: IF, WB, ELISA	Positivkontrollen: WB : NIH/3T3-Zellen, HeLa-Zellen
Getestete Reaktivität: Human, Maus, Ratte	IF : HepG2-Zellen,

Hintergrundinformationen

GEMIN8, also named as FAM51A1 and Gemin-8, is associated with the SMN complex and is localized in the cytoplasm and in the nucleus, where it is highly concentrated in Gems. Gemin6, Gemin7, and Unrip form a stable cytoplasmic complex whose association with SMN requires Gemin8. Gemin8 binds directly to SMN and mediates its interaction with the Gemin6/Gemin7 heterodimer. This antibody recognize GEMIN8(28-32kd) only.

Lagerung

Lagerungsbedingungen:
Bei -20°C lagern.
Lagerungspuffer:
PBS mit 0.02% Natriumazid und 50% Glycerin pH 7.3.
Aliquotieren ist nicht notwendig bei -20°C Lagerung

***** 20ul-Größen enthalten 0.1% BSA**

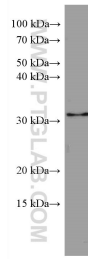
For technical support and original validation data for this product please contact:

T: 1 (888) 4PTGLAB (1-888-478-4522) (toll free
in USA), or 1(312) 455-8498 (outside USA)

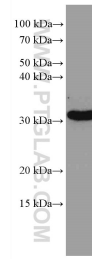
E: proteintech@ptglab.com
W: ptglab.com

This product is exclusively available under Proteintech Group brand and is not available to purchase from any other manufacturer.

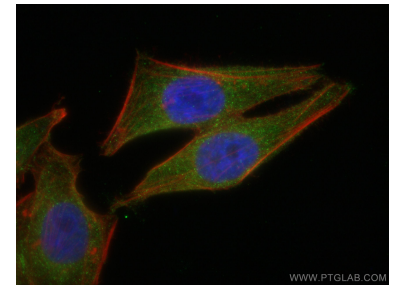
Ausgewählte Validierungsdaten



HeLa cells were subjected to SDS PAGE followed by western blot with 67871-1-Ig (GEMIN8 antibody) at dilution of 1:5000 incubated at room temperature for 1.5 hours.



NIH/3T3 cells were subjected to SDS PAGE followed by western blot with 67871-1-Ig (GEMIN8 antibody) at dilution of 1:5000 incubated at room temperature for 1.5 hours.



Immunofluorescent analysis of (4% PFA) fixed HepG2 cells using GEMIN8 antibody (67871-1-Ig, Clone: 1A6B4) at dilution of 1:400 and CoraLite®488-Conjugated AffiniPure Goat Anti-Mouse IgG(H+L), CL594-Phalloidin (red). DAPI (Blue).