

Allgemeine Informationen

Katalog-Nr.: 67894-1-Ig	GenBank-Zugangsnummer: BC010703	Reinigungsmethode: Protein-G-Reinigung
Größe: 150ul , Konzentration: 1000 µg/ml von2040 Nanodrop;	GeneID (NCBI): 2040	CloneNo.: 1A4D6
Wirt: Maus	Vollständiger Name: stomatin	Empfohlene Verdünnungen: WB 1:2000-1:10000 IHC 1:50-1:500
Isotyp: IgG1	Berechnete Masse: 288 aa, 32 kDa	
Immunogen Katalognummer: AG2676	Beobachtete Masse: 32 kDa	

Anwendungen

Geprüfte Anwendungen:

IHC, WB, ELISA

Getestete Reaktivität:

Human

Hinweis-IHC: Antigendemaskierung mit TE-Puffer pH 9,0 empfohlen. (*) Wahlweise kann die Antigendemaskierung auch mit Citratpuffer pH 6,0 erfolgen.

Positivkontrollen:

WB : humanes Plazenta-Gewebe, HeLa-Zellen, humanes Hodengewebe

IHC : humanes Lungenkarzinomgewebe,

Hintergrundinformationen

STOM, also named as BND7, EPB72, Stomatin and Protein 7.2b, belongs to the band 7/mec-2 family. It is thought to regulate cation conductance. STOM may regulate ACCN1 and ACCN3 gating. STOM is a membrane protein involved in regulation of monovalent cation transport through lipid membranes. Interestingly, STOM (which has a structure similar to caveolin) is a major lipid-raft component of erythrocytes. It may have a role in membrane microdomains modulation leading to membrane budding and MPs release.(PMID:19138258)

Lagerung

Lagerungsbedingungen:

Bei -20°C lagern.

Lagerungspuffer:

PBS mit 0.02% Natriumazid und 50% Glycerin pH 7.3.

Aliquotieren ist nicht notwendig bei -20°C Lagerung

***** 20ul-Größen enthalten 0.1% BSA**

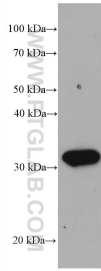
For technical support and original validation data for this product please contact:

T: 1 (888) 4PTGLAB (1-888-478-4522) (toll free in USA), or 1(312) 455-8498 (outside USA)

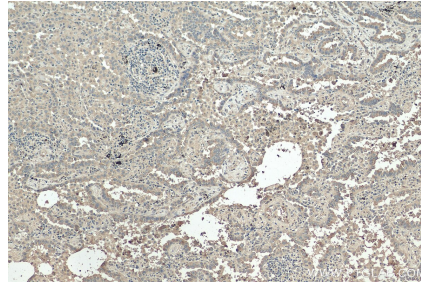
E: proteintech@ptglab.com
W: ptglab.com

This product is exclusively available under Proteintech Group brand and is not available to purchase from any other manufacturer.

Ausgewählte Validierungsdaten



human placenta tissue were subjected to SDS PAGE followed by western blot with 67894-1-Ig (Stomatin antibody) at dilution of 1:5000 incubated at room temperature for 1.5 hours.



Immunohistochemical analysis of paraffin-embedded human lung cancer tissue slide using 67894-1-Ig (Stomatin antibody) at dilution of 1:200 (under 10x lens). Heat mediated antigen retrieval with Tris-EDTA buffer (pH 9.0).