

Nur für Forschungszwecke

KBTBD2 Monoklonaler Antikörper

Katalog-Nr.:67895-1-Ig



Allgemeine Informationen

| | | |
|--|---|---|
| Katalog-Nr.: 67895-1-Ig | GenBank-Zugangsnummer: BC047107 | Reinigungsmethode: Protein-G-Reinigung |
| Größe: 150ul , Konzentration: 1000 µg/ml von25948 Nanodrop; | GeneID (NCBI): von25948 | CloneNo.: 2A9F3 |
| Wirt: Maus | Vollständiger Name: kelch repeat and BTB (POZ) domain containing 2 | Empfohlene Verdünnungen: WB 1:1000-1:6000 IF 1:200-1:800 |
| Isotyp: IgG1 | Berechnete Masse: 622 aa, 71 kDa | |
| Immunogen Katalognummer: AG4933 | Beobachtete Masse: 60-70 kDa | |

Anwendungen

Geprüfte Anwendungen:

IF, WB, ELISA

Getestete Reaktivität:

Human, Maus, Ratte

Positivkontrollen:

WB : A549-Zellen, HeLa-Zellen, Jurkat-Zellen, K-562-Zellen, U2OS-Zellen

IF : HeLa-Zellen,

Hintergrundinformationen

Kelch repeat and BTB domain containing 2(KBTBD2), also known as BTB and kelch domain-containing protein 1, encodes a BTB-Kelch family subunit that p85 α -specific recognition for the Cullin3-based E3 ubiquitin ligase complex, which regulates p85 α protein ubiquitination and subsequently regulates phosphoinositide-3 kinases (PI3K) signaling (PMID:27708159). However, the expression profile and functional significance of Kbtbd2 is still largely unknown. The Human Protein Atlas which is an online source shows high Kbtbd2 expression in the spleen and thymus, suggesting that Kbtbd2 might involved in immunization (PMID:29331106). In addition, Kbtbd2 is related to Src-induced phosphorylation of protein, spermatogonial stem cell activity(PMID:15623525, 29331106).

Lagerung

Lagerungsbedingungen:

Bei -20°C lagern. Nach dem Versand ein Jahr lang stabil

Lagerungspuffer:

PBS mit 0.02% Natriumazid und 50% Glycerin pH 7.3.

Aliquotieren ist nicht notwendig bei -20°C Lagerung

*** 20ul-Größen enthalten 0.1% BSA

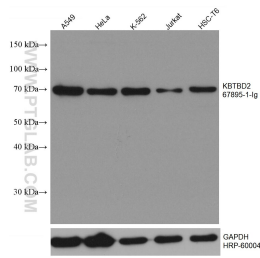
For technical support and original validation data for this product please contact:

T: 1 (888) 4PTGLAB (1-888-478-4522) (toll free
in USA), or 1(312) 455-8498 (outside USA)

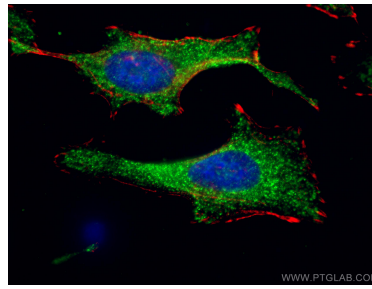
E: proteintech@ptglab.com
W: ptglab.com

This product is exclusively available under Proteintech Group brand and is not available to purchase from any other manufacturer.

Ausgewählte Validierungsdaten



Various lysates were subjected to SDS PAGE followed by western blot with 67895-1-Ig (KBTBD2 antibody) at dilution of 1:3000 incubated at room temperature for 1.5 hours. The membrane was stripped and reblotted with HRP-conjugated GAPDH Monoclonal antibody (HRP-60004) as loading control.



Immunofluorescent analysis of (-20°C Ethanol) fixed HeLa cells using KBTBD2 antibody (67895-1-Ig, Clone: 2A9F3) at dilution of 1:400 and CoraLite®488-Conjugated AffiniPure Goat Anti-Mouse IgG(H+L), CL594-Phalloidin (red). DAPI (blue).