

Nur für Forschungszwecke

RAB11A Monoklonaler Antikörper

Katalog-Nr.:67902-1-Ig



Allgemeine Informationen

Katalog-Nr.: 67902-1-Ig	GenBank-Zugangsnummer: BC013348	Reinigungsmethode: Protein-G-Reinigung
Größe: 150ul , Konzentration: 1000 µg/ml von8766 Nanodrop;	GeneID (NCBI): 8766	CloneNo.: 4A4C9
Wirt: Maus	Vollständiger Name: RAB11A, member RAS oncogene family	Empfohlene Verdünnungen: WB 1:5000-1:20000 IF 1:200-1:800
Isotyp: IgG1	Berechnete Masse: 216 aa, 24 kDa	
Immunogen Katalognummer: AG8879	Beobachtete Masse: 24 kDa	

Anwendungen

Geprüfte Anwendungen:

IF, WB, ELISA

Getestete Reaktivität:

Hausschwein, Human, Maus, Ratte

Positivkontrollen:

WB : Maushirngewebe, A431-Zellen, A549-Zellen, HeLa-Zellen, HepG2-Zellen, K-562-Zellen, Ratten-Cerebellum-Gewebe, Rattenhirngewebe

IF : HeLa-Zellen,

Hintergrundinformationen

Rab11a, Rab11b and Rab25 comprise a subfamily of Rab proteins that belong to the Ras-related small GTPase protein superfamily (PMID: 8074219, PMID: 10708602). Rab11 proteins are involved in endocytosis and plasma membrane recycling in non-polarized and polarized cells (PMID: 8638719, PMID: 8922376). Rab11a and Rab11b are ubiquitously expressed in most tissues, while Rab25 is only expressed in epithelial cells. Rab11a is known to regulate the recycling of internalized cell surface proteins and receptors from the early endosome through the trans-Golgi network (PMID: 11121436, PMID: 9600939).

Lagerung

Lagerungsbedingungen:

Bei -20°C lagern. Nach dem Versand ein Jahr lang stabil

Lagerungspuffer:

PBS mit 0.02% Natriumazid und 50% Glycerin pH 7.3.

Aliquotieren ist nicht notwendig bei -20°C Lagerung

*** 20ul-Größen enthalten 0.1% BSA

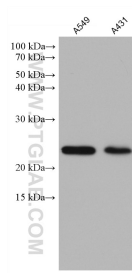
For technical support and original validation data for this product please contact:

T: 1 (888) 4PTGLAB (1-888-478-4522) (toll free
in USA), or 1(312) 455-8498 (outside USA)

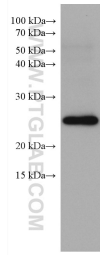
E: proteintech@ptglab.com
W: ptglab.com

This product is exclusively available under Proteintech Group brand and is not available to purchase from any other manufacturer.

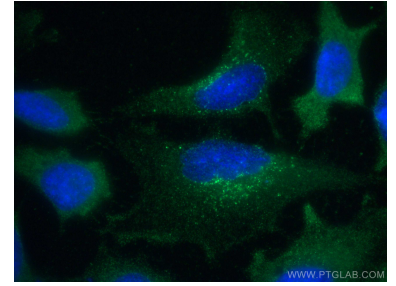
Ausgewählte Validierungsdaten



Various lysates were subjected to SDS PAGE followed by western blot with 67902-1-Ig (RAB11A antibody) at dilution of 1:10000 incubated at room temperature for 1.5 hours.



mouse brain tissue were subjected to SDS PAGE followed by western blot with 67902-1-Ig (RAB11A antibody) at dilution of 1:10000 incubated at room temperature for 1.5 hours.



Immunofluorescent analysis of (-20°C Methanol) fixed HeLa cells using RAB11A antibody (67902-1-Ig, Clone: 4A4C9) at dilution of 1:400 and CoraLite®488-Conjugated AffiniPure Goat Anti-Mouse IgG(H+L).