

Nur für Forschungszwecke

MRPS25 Monoklonaler Antikörper

Katalog-Nr.:67903-1-Ig



Allgemeine Informationen

Katalog-Nr.: 67903-1-Ig	GenBank-Zugangsnummer: BC003590	Reinigungsmethode: Protein-A-Reinigung
Größe: 150ul , Konzentration: 1000 µg/ml von64432	GeneID (NCBI): von64432	CloneNo.: 3B10B6
Nanodrop;	Vollständiger Name: mitochondrial ribosomal protein S25	Empfohlene Verdünnungen: WB 1:2000-1:10000
Wirt: Maus	Berechnete Masse: 20 kDa	
Isotyp: IgG2b	Beobachtete Masse: 20 kDa	
Immunogen Katalognummer: AG7846		

Anwendungen

Geprüfte Anwendungen:
WB, ELISA

Getestete Reaktivität:
Human, Maus, Ratte

Positivkontrollen:

WB : HeLa-Zellen, 4T1-Zellen, HepG2-Zellen, Jurkat-Zellen, K-562-Zellen, NIH/3T3-Zellen, PC-12-Zellen

Hintergrundinformationen

Mitochondrial ribosomal protein S25 (MRPS25) belongs to the ribosomal protein S25/L51 family. It is a component of the mitochondrial ribosome small subunit (28S). The variant segregated with the disease and substitutes a highly conserved proline residue with leucine (p.P72L) that, based on the high-resolution structure of the 28S ribosome, is predicted to compromise inter-protein contacts and destabilize the small subunit.

Lagerung

Lagerungsbedingungen:
Bei -20°C lagern. Nach dem Versand ein Jahr lang stabil

Lagerungspuffer:
PBS mit 0.02% Natriumazid und 50% Glycerin pH 7.3.

Aliquotieren ist nicht notwendig bei -20°C Lagerung

***** 20ul-Größen enthalten 0.1% BSA**

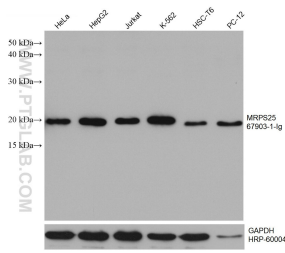
For technical support and original validation data for this product please contact:

T: 1 (888) 4PTGLAB (1-888-478-4522) (toll free in USA), or 1(312) 455-8498 (outside USA)

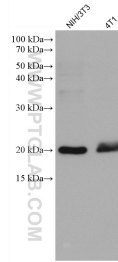
E: proteintech@ptglab.com
W: ptglab.com

This product is exclusively available under Proteintech Group brand and is not available to purchase from any other manufacturer.

Ausgewählte Validierungsdaten



Various lysates were subjected to SDS PAGE followed by western blot with 67903-1-Ig (MRPS25 antibody) at dilution of 1:5000 incubated at room temperature for 1.5 hours. The membrane was stripped and reblotted with HRP-conjugated GAPDH Monoclonal antibody (HRP-60004) as loading control.



Various lysates were subjected to SDS PAGE followed by western blot with 67903-1-Ig (MRPS25 antibody) at dilution of 1:5000 incubated at room temperature for 1.5 hours.