

Nur für Forschungszwecke

METTL7A Monoklonaler Antikörper

Katalog-Nr.:67905-1-Ig



Allgemeine Informationen

Katalog-Nr.: 67905-1-Ig	GenBank-Zugangsnummer: BC008180	Reinigungsmethode: Protein-A-Reinigung
Größe: 150ul, Konzentration: 1000 µg/ml von25840 Nanodrop;	GeneID (NCBI): methyltransferase like 7A	CloneNo.: 1A9B4
Wirt: Maus	Vollständiger Name: methyltransferase like 7A	Empfohlene Verdünnungen: WB 1:5000-1:50000 IHC 1:500-1:2000
Isotyp: IgG1	Berechnete Masse: 28 kDa	
Immunogen Katalognummer: AG29986	Beobachtete Masse: 28 kDa	

Anwendungen

Geprüfte Anwendungen:

IHC, WB, ELISA

Getestete Reaktivität:

Human, Kaninchen, Maus, Ratte

Hinweis-IHC: Antigendemaskierung mit TE-Puffer pH 9,0 empfohlen. (*) Wahlweise kann die Antigendemaskierung auch mit Citratpuffer pH 6,0 erfolgen.

Positivkontrollen:

WB : RattenLebergewebe, HepG2-Zellen, K-562-Zellen, KaninchenLebergewebe, LNCaP-Zellen, Mauslebergewebe, Mauslungengewebe

IHC : humanes Schilddrüsenkarzinomgewebe, humanes Leberkarzinomgewebe

Hintergrundinformationen

methyltransferase like 7A (METTL7A) is a 244 amino acid protein which belongs to the methyltransferase super family. Methyltransferase can transfer a methyl group from a donor to an acceptor. Methylation may be linked to cancer development as methylation of tumor suppressor genes promotes tumorigenesis and metastasis.

Lagerung

Lagerungsbedingungen:

Bei -20°C lagern. Nach dem Versand ein Jahr lang stabil

Lagerungspuffer:

PBS mit 0.02% Natriumazid und 50% Glycerin pH 7.3.

Aliquotieren ist nicht notwendig bei -20°C Lagerung

*** 20ul-Größen enthalten 0.1% BSA

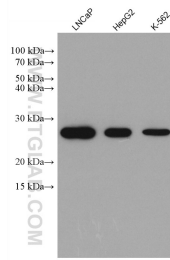
For technical support and original validation data for this product please contact:

T: 1 (888) 4PTGLAB (1-888-478-4522) (toll free in USA), or 1(312) 455-8498 (outside USA)

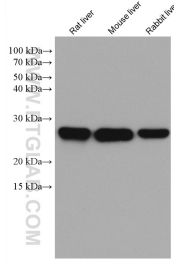
E: proteintech@ptglab.com
W: ptglab.com

This product is exclusively available under Proteintech Group brand and is not available to purchase from any other manufacturer.

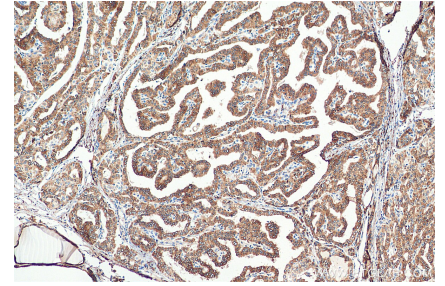
Ausgewählte Validierungsdaten



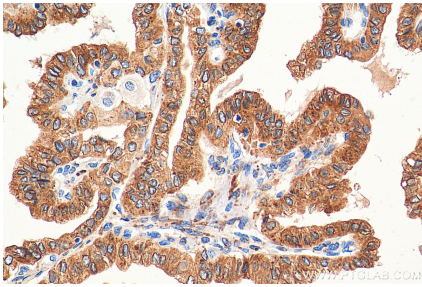
Various lysates were subjected to SDS PAGE followed by western blot with 67905-1-Ig (METTL7A antibody) at dilution of 1:10000 incubated at room temperature for 1.5 hours.



Various lysates were subjected to SDS PAGE followed by western blot with 67905-1-Ig (METTL7A antibody) at dilution of 1:10000 incubated at room temperature for 1.5 hours.



Immunohistochemical analysis of paraffin-embedded human thyroid cancer tissue slide using 67905-1-Ig (METTL7A antibody) at dilution of 1:1000 (under 10x lens). Heat mediated antigen retrieval with Tris-EDTA buffer (pH 9.0).



Immunohistochemical analysis of paraffin-embedded human thyroid cancer tissue slide using 67905-1-Ig (METTL7A antibody) at dilution of 1:1000 (under 40x lens). Heat mediated antigen retrieval with Tris-EDTA buffer (pH 9.0).