

Nur für Forschungszwecke

# PSMA1 Monoklonaler Antikörper

Katalog-Nr.:67910-1-Ig



## Allgemeine Informationen

<b>Katalog-Nr.:</b> 67910-1-Ig	<b>GenBank-Zugangsnummer:</b> BC015105	<b>Reinigungsmethode:</b> Protein-A-Reinigung
<b>Größe:</b> 150ul , Konzentration: 500 µg/ml von Nanodrop;	<b>GeneID (NCBI):</b> 5682	<b>CloneNo.:</b> 1D1D5
<b>Wirt:</b> Maus	<b>Vollständiger Name:</b> proteasome (prosome, macropain) subunit, alpha type, 1	<b>Empfohlene Verdünnungen:</b> WB 1:5000-1:50000 IHC 1:500-1:2000
<b>Isotyp:</b> IgG2b	<b>Berechnete Masse:</b> 30 kDa	
<b>Immunogen Katalognummer:</b> AG30527	<b>Beobachtete Masse:</b> 29-33 kDa	

## Anwendungen

### Geprüfte Anwendungen:

IHC, WB, ELISA

### Getestete Reaktivität:

Human, Maus, Ratte

**Hinweis-IHC: Antigendemaskierung mit TE-Puffer pH 9,0 empfohlen. (\*) Wahlweise kann die Antigendemaskierung auch mit Citratpuffer pH 6,0 erfolgen.**

### Positivkontrollen:

WB : LNCaP-Zellen, 4T1-Zellen, HeLa-Zellen, HepG2-Zellen, Jurkat-Zellen, K-562-Zellen, NIH/3T3-Zellen, RAW 264.7-Zellen

IHC : humanes Kolonkarzinomgewebe,

## Hintergrundinformationen

PSMA1(Proteasome subunit alpha type-1) is also named as HC2, NU, PROS30, PSC2 and belongs to the peptidase T1A family. The proteasome is a multicatalytic proteinase complex which is characterized by its ability to cleave peptides with Arg, Phe, Tyr, Leu, and Glu adjacent to the leaving group at neutral or slightly basic pH. It is induced in breast cancer tissue and up-regulated in liver tumor tissues (PMID:17127214;16317774;17004105).

## Lagerung

### Lagerungsbedingungen:

Bei -20°C lagern. Nach dem Versand ein Jahr lang stabil

### Lagerungspuffer:

PBS mit 0.02% Natriumazid und 50% Glycerin pH 7.3.

Aliquotieren ist nicht notwendig bei -20°C Lagerung

\*\*\* 20ul-Größen enthalten 0.1% BSA

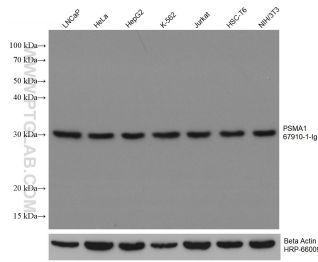
For technical support and original validation data for this product please contact:

T: 1 (888) 4PTGLAB (1-888-478-4522) (toll free in USA), or 1(312) 455-8498 (outside USA)

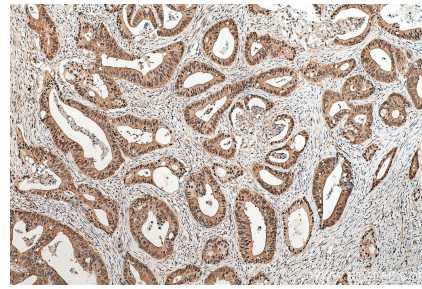
E: proteintech@ptglab.com  
W: ptglab.com

This product is exclusively available under Proteintech Group brand and is not available to purchase from any other manufacturer.

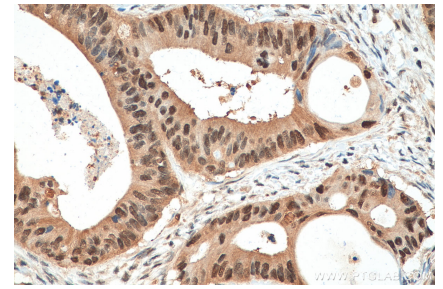
## Ausgewählte Validierungsdaten



Various lysates were subjected to SDS PAGE followed by western blot with 67910-1-Ig (PSMA1 antibody) at dilution of 1:10000 incubated at room temperature for 1.5 hours. The membrane was stripped and reblotted with HRP-conjugated Beta Actin Monoclonal antibody (HRP-66009) as loading control.



Immunohistochemical analysis of paraffin-embedded human colon cancer tissue slide using 67910-1-Ig (PSMA1 antibody) at dilution of 1:1000 (under 10x lens). Heat mediated antigen retrieval with Tris-EDTA buffer (pH 9.0).



Immunohistochemical analysis of paraffin-embedded human colon cancer tissue slide using 67910-1-Ig (PSMA1 antibody) at dilution of 1:1000 (under 40x lens). Heat mediated antigen retrieval with Tris-EDTA buffer (pH 9.0).