

Nur für Forschungszwecke

# PGD Monoklonaler Antikörper

Katalog-Nr.:67916-1-Ig



## Allgemeine Informationen

<b>Katalog-Nr.:</b> 67916-1-Ig	<b>GenBank-Zugangsnummer:</b> BC000368	<b>Reinigungsmethode:</b> Protein-G-Reinigung
<b>Größe:</b> 150ul , Konzentration: 1000 µg/ml von5226 Nanodrop;	<b>GeneID (NCBI):</b> 5226	<b>CloneNo.:</b> 2A10G4
<b>Wirt:</b> Maus	<b>Vollständiger Name:</b> phosphogluconate dehydrogenase	<b>Empfohlene Verdünnungen:</b> WB 1:5000-1:50000 IF 1:400-1:1600
<b>Isotyp:</b> IgG1	<b>Berechnete Masse:</b> 53 kDa	
<b>Immunogen Katalognummer:</b> AG6871	<b>Beobachtete Masse:</b> 53 kDa, 45 kDa	

## Anwendungen

<b>Geprüfte Anwendungen:</b> IF, WB, ELISA	<b>Positivkontrollen:</b> WB : LNCaP-Zellen, HEK-293-Zellen, HeLa-Zellen, Jurkat-Zellen, K-562-Zellen
<b>Getestete Reaktivität:</b> Human	IF : HepG2-Zellen,

## Hintergrundinformationen

PGD, also named as PGDH, belongs to the 6-phosphogluconate dehydrogenase family. PGD catalyses the oxidative decarboxylation of 6-phosphogluconate to ribulose 5-phosphate in the context of the oxidative part of the pentose phosphate pathway. PGD is important for the production of NADPH, which is necessary for reductive biosynthesis, such as the formation of lipids and nucleotides, and the activity of enzymes involved in maintaining cell integrity, in combatting oxidative stress and in the first line of immunological defence. (PMID: 35234135)

## Lagerung

**Lagerungsbedingungen:**  
Bei -20°C lagern.  
**Lagerungspuffer:**  
PBS mit 0.02% Natriumazid und 50% Glycerin pH 7.3.  
Aliquotieren ist nicht notwendig bei -20°C Lagerung

\*\*\* 20ul-Größen enthalten 0.1% BSA

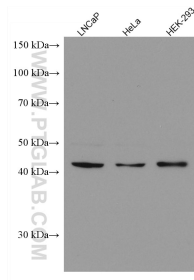
For technical support and original validation data for this product please contact:

T: 1 (888) 4PTGLAB (1-888-478-4522) (toll free  
in USA), or 1(312) 455-8498 (outside USA)

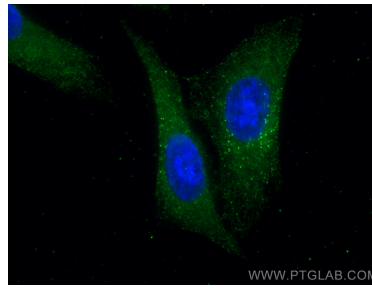
E: proteintech@ptglab.com  
W: ptglab.com

This product is exclusively available under Proteintech Group brand and is not available to purchase from any other manufacturer.

## Ausgewählte Validierungsdaten



Various lysates were subjected to SDS PAGE followed by western blot with 67916-1-Ig (PGD antibody) at dilution of 1:25000 incubated at room temperature for 1.5 hours.



Immunofluorescent analysis of (-20°C Methanol) fixed HepG2 cells using PGD antibody (67916-1-Ig, Clone: 2A10G4) at dilution of 1:800 and CoraLite®488-Conjugated AffiniPure Goat Anti-Mouse IgG(H+L).