

Nur für Forschungszwecke

ROBO1 Monoklonaler Antikörper

Katalog-Nr.:67922-1-Ig



Allgemeine Informationen

Katalog-Nr.: 67922-1-Ig	GenBank-Zugangsnummer: BC112336	Reinigungsmethode: Protein-G-Reinigung
Größe: 150ul, Konzentration: 1000 µg/ml von6091 Nanodrop;	GeneID (NCBI): 2H4H5	CloneNo.: 2H4H5
Wirt: Maus	Vollständiger Name: roundabout, axon guidance receptor, homolog 1 (Drosophila)	Empfohlene Verdünnungen: WB 1:5000-1:50000 IHC 1:2500-1:10000
Isotyp: IgG1	Berechnete Masse: 1651 aa, 181 kDa	
Immunogen Katalognummer: AG18074	Beobachtete Masse: 200 kDa	

Anwendungen

Geprüfte Anwendungen:

IHC, WB, ELISA

Getestete Reaktivität:

Human, Maus

Hinweis-IHC: Antigendemaskierung mit TE-Puffer pH 9,0 empfohlen. (*) Wahlweise kann die Antigendemaskierung auch mit Citratpuffer pH 6,0 erfolgen.

Positivkontrollen:

WB : Y79-Zellen, HEK-293-Zellen, HeLa-Zellen, HepG2-Zellen, U-87 MG-Zellen

IHC : Maus-Cerebellum-Gewebe,

Hintergrundinformationen

ROBO1, also named as DUTT1, belongs to the immunoglobulin superfamily and ROBO family. It is a receptor for SLIT1 and SLIT2 which are thought to act as molecular guidance cue in cellular migration, including axonal navigation at the ventral midline of the neural tube and projection of axons to different regions during neuronal development. In axon growth cones, the silencing of the attractive effect of NTN1 by SLIT2 may require the formation of a ROBO1-DCC complex. It may be required for lung development.

Lagerung

Lagerungsbedingungen:

Bei -20°C lagern.

Lagerungspuffer:

PBS mit 0.02% Natriumazid und 50% Glycerin pH 7.3.

Aliquotieren ist nicht notwendig bei -20°C Lagerung

*** 20ul-Größen enthalten 0.1% BSA

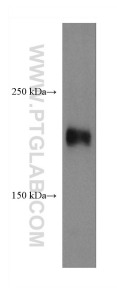
For technical support and original validation data for this product please contact:

T: 1 (888) 4PTGLAB (1-888-478-4522) (toll free in USA), or 1(312) 455-8498 (outside USA)

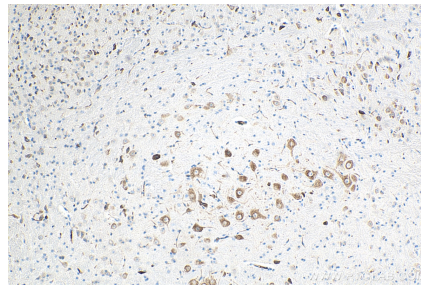
E: proteintech@ptglab.com
W: ptglab.com

This product is exclusively available under Proteintech Group brand and is not available to purchase from any other manufacturer.

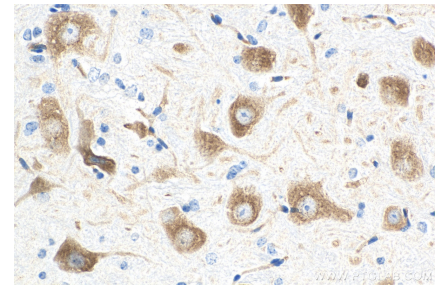
Ausgewählte Validierungsdaten



Y79 cells were subjected to SDS PAGE followed by western blot with 67922-1-Ig (ROBO1 antibody) at dilution of 1:10000 incubated at room temperature for 1.5 hours.



Immunohistochemical analysis of paraffin-embedded mouse cerebellum tissue slide using 67922-1-Ig (ROBO1 antibody) at dilution of 1:5000 (under 10x lens). Heat mediated antigen retrieval with Tris-EDTA buffer (pH 9.0).



Immunohistochemical analysis of paraffin-embedded mouse cerebellum tissue slide using 67922-1-Ig (ROBO1 antibody) at dilution of 1:5000 (under 40x lens). Heat mediated antigen retrieval with Tris-EDTA buffer (pH 9.0).