

Nur für Forschungszwecke

# PSME1 Monoklonaler Antikörper

Katalog-Nr.:67928-1-Ig



## Allgemeine Informationen

<b>Katalog-Nr.:</b> 67928-1-Ig	<b>GenBank-Zugangsnummer:</b> BC007503	<b>Reinigungsmethode:</b> Protein-G-Reinigung
<b>Größe:</b> 150ul , Konzentration: 1000 µg/ml von5720 Nanodrop;	<b>GeneID (NCBI):</b> 5720	<b>CloneNo.:</b> 1F7E2
<b>Wirt:</b> Maus	<b>Vollständiger Name:</b> proteasome (prosome, macropain) activator subunit 1 (PA28 alpha)	<b>Empfohlene Verdünnungen:</b> WB 1:5000-1:50000 IF 1:500-1:2000
<b>Isotyp:</b> IgG1	<b>Berechnete Masse:</b> 29 kDa	
<b>Immunogen Katalognummer:</b> AG30549	<b>Beobachtete Masse:</b> 29 kDa	

## Anwendungen

### Geprüfte Anwendungen:

IF, WB, ELISA

### Getestete Reaktivität:

Human, Maus

### Positivkontrollen:

WB : MDA-MB-231-Zellen, C6-Zellen, HEK-293-Zellen, HeLa-Zellen, Jurkat-Zellen, K-562-Zellen, NIH/3T3-Zellen und 4T1-Zellen.

IF : MCF-7-Zellen,

## Hintergrundinformationen

The principal function of the proteasome is targeted degradation of intracellular proteins. Activity of the 20S proteasome is controlled by regulatory complexes that bind to the ends of the cylindrical proteasome. 11S regulator (REG or PA28), is a complex of 28 kDa subunits that is thought to activate proteasomes toward the production of antigenic peptides. Human PSME1 and PSME2 genes encode the two proteasome activators PA28 alpha and beta, respectively, which have been implicated in antigen processing for loading class I MHC molecules. The PA28 activator complex enhances the generation of class I binding peptides by altering the cleavage pattern of the proteasome.

## Lagerung

### Lagerungsbedingungen:

Bei -20°C lagern. Nach dem Versand ein Jahr lang stabil

### Lagerungspuffer:

PBS mit 0.02% Natriumazid und 50% Glycerin pH 7.3.

Aliquotieren ist nicht notwendig bei -20°C Lagerung

\*\*\* 20ul-Größen enthalten 0.1% BSA

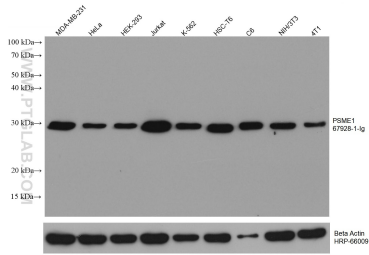
For technical support and original validation data for this product please contact:

T: 1 (888) 4PTGLAB (1-888-478-4522) (toll free in USA), or 1(312) 455-8498 (outside USA)

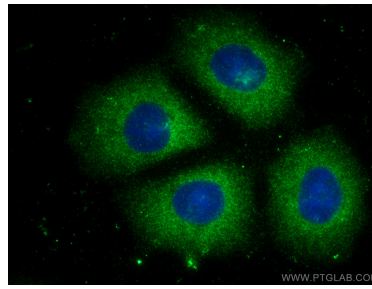
E: proteintech@ptglab.com  
W: ptglab.com

This product is exclusively available under Proteintech Group brand and is not available to purchase from any other manufacturer.

## Ausgewählte Validierungsdaten



Various lysates were subjected to SDS PAGE followed by western blot with 67928-1-Ig (PSME1 antibody) at dilution of 1:10000 incubated at room temperature for 1.5 hours. The membrane was stripped and reblotted with HRP-conjugated Beta Actin Monoclonal antibody (HRP-66009) as loading control.



Immunofluorescent analysis of (-20°C Methanol) fixed MCF-7 cells using PSME1 antibody (67928-1-Ig, Clone: 1F7E2) at dilution of 1:1000 and CoraLite®488-Conjugated AffiniPure Goat Anti-Mouse IgG(H+L).