

Nur für Forschungszwecke

PSMA3 Monoklonaler Antikörper

Katalog-Nr.:67938-1-Ig



Allgemeine Informationen

Katalog-Nr.: 67938-1-Ig	GenBank-Zugangsnummer: BC029402	Reinigungsmethode: Protein-A-Reinigung
Größe: 150ul , Konzentration: 1000 µg/ml von5684 Nanodrop;	GeneID (NCBI): 5684	CloneNo.: 1A8C9
Wirt: Maus	Vollständiger Name: proteasome (prosome, macropain) subunit, alpha type, 3	Empfohlene Verdünnungen: WB 1:5000-1:50000 IHC 1:250-1:1000
Isotyp: IgG2b	Berechnete Masse: 255 aa, 28 kDa	
Immunogen Katalognummer: AG30552	Beobachtete Masse: 28 kDa	

Anwendungen

Geprüfte Anwendungen:

IHC, WB, ELISA

Getestete Reaktivität:

Human, Maus, Ratte

Hinweis-IHC: Antigenmaskierung mit TE-Puffer pH 9,0 empfohlen. (*) Wahlweise kann die Antigenmaskierung auch mit Citratpuffer pH 6,0 erfolgen.

Positivkontrollen:

WB : A431-Zellen, 4T1-Zellen, HEK-293-Zellen, HeLa-Zellen, Jurkat-Zellen, K-562-Zellen, NIH/3T3-Zellen, U2OS-Zellen

IHC : humanes Leberkarzinomgewebe,

Hintergrundinformationen

PSMA3(Proteasome subunit alpha type-3) is also named as HC8, PSC8 and belongs to the peptidase T1A family. The proteasome is a multicatalytic protease complex that catalyzes an energy-dependent, extralysosomal proteolytic pathway responsible for selective elimination of proteins with aberrant structures and naturally occurring short-lived proteins related to metabolic regulation and cell cycle progression. It has 2 isoforms produced by alternative splicing.

Lagerung

Lagerungsbedingungen:

Bei -20°C lagern.

Lagerungspuffer:

PBS mit 0.02% Natriumazid und 50% Glycerin pH 7.3.

Aliquotieren ist nicht notwendig bei -20°C Lagerung

*** 20ul-Größen enthalten 0.1% BSA

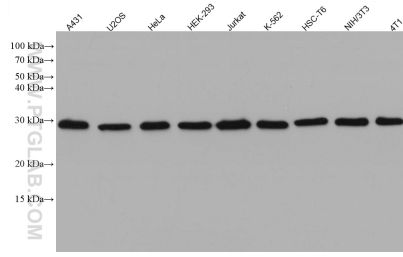
For technical support and original validation data for this product please contact:

T: 1 (888) 4PTGLAB (1-888-478-4522) (toll free in USA), or 1(312) 455-8498 (outside USA)

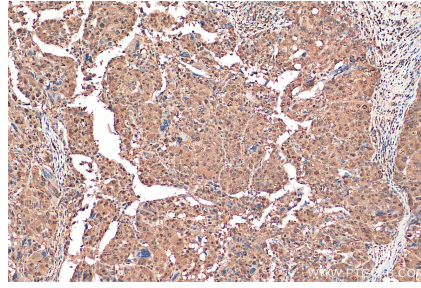
E: proteintech@ptglab.com
W: ptglab.com

This product is exclusively available under Proteintech Group brand and is not available to purchase from any other manufacturer.

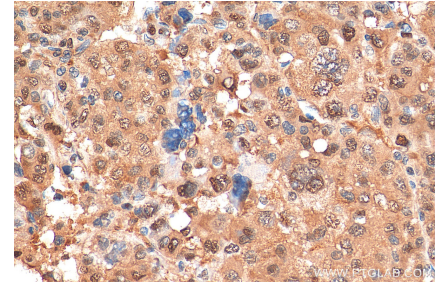
Ausgewählte Validierungsdaten



Various lysates were subjected to SDS PAGE followed by western blot with 67938-1-Ig (PSMA3 antibody) at dilution of 1:20000 incubated at room temperature for 1.5 hours.



Immunohistochemical analysis of paraffin-embedded human liver cancer tissue slide using 67938-1-Ig (PSMA3 antibody) at dilution of 1:500 (under 10x lens). Heat mediated antigen retrieval with Tris-EDTA buffer (pH 9.0).



Immunohistochemical analysis of paraffin-embedded human liver cancer tissue slide using 67938-1-Ig (PSMA3 antibody) at dilution of 1:500 (under 40x lens). Heat mediated antigen retrieval with Tris-EDTA buffer (pH 9.0).