

Nur für Forschungszwecke

PSMB5 Monoklonaler Antikörper

Katalog-Nr.:67959-1-Ig



Allgemeine Informationen

Katalog-Nr.: 67959-1-Ig	GenBank-Zugangsnummer: BC057840	Reinigungsmethode: Protein-A-Reinigung
Größe: 150ul , Konzentration: 1000 µg/ml von5693 Nanodrop;	GeneID (NCBI): 5693	CloneNo.: 2E9H1
Wirt: Maus	Vollständiger Name: proteasome (prosome, macropain) subunit, beta type, 5	Empfohlene Verdünnungen: WB 1:5000-1:50000 IHC 1:500-1:2000 IF 1:200-1:800
Isotyp: IgG2a	Berechnete Masse: 263 aa, 28 kDa	
Immunogen Katalognummer: AG5828	Beobachtete Masse: 22 kDa	

Anwendungen

Geprüfte Anwendungen:
IF, IHC, WB, ELISA

Getestete Reaktivität:
Human

Hinweis-IHC: Antigendemaskierung mit TE-Puffer pH 9,0 empfohlen. (*) Wahlweise kann die Antigendemaskierung auch mit Citratpuffer pH 6,0 erfolgen.

Positivkontrollen:

WB: A431-Zellen, HEK-293-Zellen, HeLa-Zellen, Jurkat-Zellen, K-562-Zellen, U2OS-Zellen

IHC: humanes Mammakarzinomgewebe,

IF: HeLa-Zellen,

Hintergrundinformationen

PSMB5(Proteasome subunit beta type-5) is also named as LMPX, MB1, X and belongs to the peptidase T1B family. The proteasome is a multicatalytic proteinase complex which is characterized by its ability to cleave peptides with Arg, Phe, Tyr, Leu, and Glu adjacent to the leaving group at neutral or slightly basic pH. RNAi-mediated silencing of it has 2 isoforms produced by alternative splicing.

Lagerung

Lagerungsbedingungen:

Bei -20°C lagern. Nach dem Versand ein Jahr lang stabil

Lagerungspuffer:

PBS mit 0.02% Natriumazid und 50% Glycerin pH 7.3.

Aliquotieren ist nicht notwendig bei -20°C Lagerung

***** 20ul-Größen enthalten 0.1% BSA**

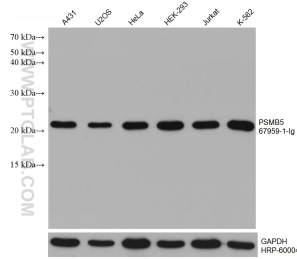
For technical support and original validation data for this product please contact:

T: 1 (888) 4PTGLAB (1-888-478-4522) (toll free in USA), or 1(312) 455-8498 (outside USA)

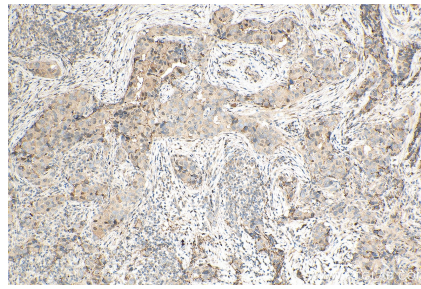
E: proteintech@ptglab.com
W: ptglab.com

This product is exclusively available under Proteintech Group brand and is not available to purchase from any other manufacturer.

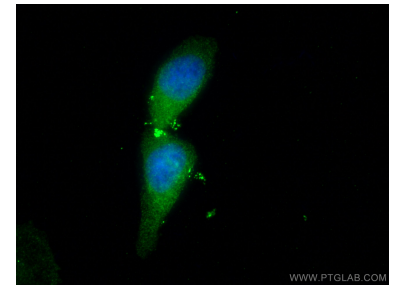
Ausgewählte Validierungsdaten



Various lysates were subjected to SDS PAGE followed by western blot with 67959-1-Ig (PSMB5 antibody) at dilution of 1:10000 incubated at room temperature for 1.5 hours. The membrane was stripped and reblotted with HRP-conjugated GAPDH Monoclonal antibody (HRP-60004) as loading control.



Immunohistochemical analysis of paraffin-embedded human breast cancer tissue slide using 67959-1-Ig (PSMB5 antibody) at dilution of 1:1000 (under 10x lens). Heat mediated antigen retrieval with Tris-EDTA buffer (pH 9.0).



Immunofluorescent analysis of (4% PFA) fixed HeLa cells using PSMB5 antibody (67959-1-Ig, Clone: 2E9H1) at dilution of 1:400 and CoraLite®488-Conjugated AffiniPure Goat Anti-Mouse IgG(H+L).