

Nur für Forschungszwecke

ABCE1 Monoklonaler Antikörper

Katalog-Nr.:67960-1-Ig



Allgemeine Informationen

Katalog-Nr.: 67960-1-Ig	GenBank-Zugangsnummer: BC016283	Reinigungsmethode: Protein-A-Reinigung
Größe: 150ul , Konzentration: 1000 µg/ml von6059 Nanodrop;	GeneID (NCBI): von6059	CloneNo.: 1B7E8
Wirt: Maus	Vollständiger Name: ATP-binding cassette, sub-family E (OABP), member 1	Empfohlene Verdünnungen: WB 1:5000-1:50000 IF 1:200-1:800
Isotyp: IgG2b	Berechnete Masse: 599 aa, 67 kDa	
Immunogen Katalognummer: AG28493	Beobachtete Masse: 68 kDa	

Anwendungen

Geprüfte Anwendungen:

IF, WB, ELISA

Getestete Reaktivität:

Human, Maus, Ratte

Positivkontrollen:

WB : HepG2-Zellen, 4T1-Zellen, A431-Zellen, Jurkat-Zellen, K-562-Zellen, NIH/3T3-Zellen, U2OS-Zellen

IF : U2OS-Zellen,

Hintergrundinformationen

ABCE1 is an ATPase that is a member of the ATP-binding cassette (ABC) transporters superfamily and OABP subfamily, it is an essential and highly conserved protein that is required for both eukaryotic translation initiation as well as ribosome biogenesis.

Lagerung

Lagerungsbedingungen:

Bei -20°C lagern. Nach dem Versand ein Jahr lang stabil

Lagerungspuffer:

PBS mit 0.02% Natriumazid und 50% Glycerin pH 7.3.

Aliquotieren ist nicht notwendig bei -20°C Lagerung

*** 20ul-Größen enthalten 0.1% BSA

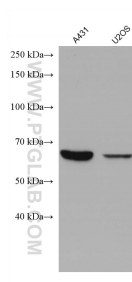
For technical support and original validation data for this product please contact:

T: 1 (888) 4PTGLAB (1-888-478-4522) (toll free
in USA), or 1(312) 455-8498 (outside USA)

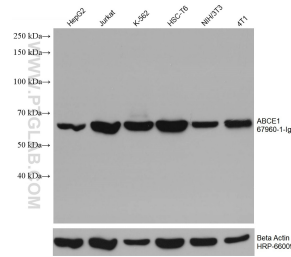
E: proteintech@ptglab.com
W: ptglab.com

This product is exclusively available under Proteintech Group brand and is not available to purchase from any other manufacturer.

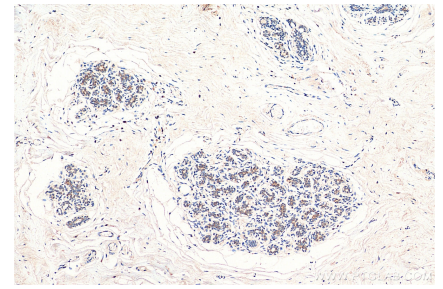
Ausgewählte Validierungsdaten



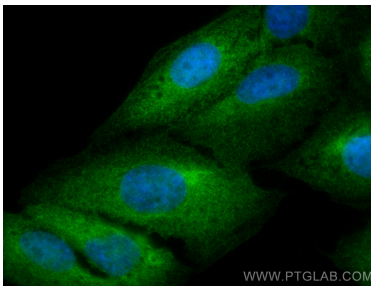
Various lysates were subjected to SDS PAGE followed by western blot with 67960-1-Ig (ABCE1 antibody) at dilution of 1:10000 incubated at room temperature for 1.5 hours.



Various lysates were subjected to SDS PAGE followed by western blot with 67960-1-Ig (ABCE1 antibody) at dilution of 1:10000 incubated at room temperature for 1.5 hours. The membrane was stripped and reblotted with HRP-conjugated Beta Actin Monoclonal antibody (HRP-66009) as loading control.



Immunohistochemical analysis of paraffin-embedded human breast cancer tissue slide using 67960-1-Ig (ABCE1 antibody) at dilution of 1:1000 (under 10x lens). Heat mediated antigen retrieval with Tris-EDTA buffer (pH 9.0).



Immunofluorescent analysis of (4% PFA) fixed U2OS cells using ABCE1 antibody (67960-1-Ig, Clone: 1B7E8) at dilution of 1:400 and CoraLite®488-Conjugated AffiniPure Goat Anti-Mouse IgG(H+L).