

Nur für Forschungszwecke

# CCT6B Monoklonaler Antikörper

Katalog-Nr.:67961-1-Ig



## Allgemeine Informationen

|  |   |   |
|--|---|---|
| <b>Katalog-Nr.:</b><br>67961-1-Ig  | <b>GenBank-Zugangsnummer:</b><br>BC027591                                     | <b>Reinigungsmethode:</b><br>Protein-G-Reinigung  |
| <b>Größe:</b><br>150ul , Konzentration: 1000 µg/ml von10693<br>Nanodrop; | <b>GeneID (NCBI):</b><br>10693  | <b>CloneNo.:</b><br>2F11A9  |
| <b>Wirt:</b><br>Maus   | <b>Vollständiger Name:</b><br>chaperonin containing TCP1, subunit 6B (zeta 2) | <b>Empfohlene Verdünnungen:</b><br>WB 1:2000-1:10000<br>IHC 1:50-1:500<br>IF 1:400-1:1600 |
| <b>Isotyp:</b><br>IgG1   | <b>Berechnete Masse:</b><br>530 aa, 58 kDa                                    |   |
| <b>Immunogen Katalognummer:</b><br>AG31295                               | <b>Beobachtete Masse:</b><br>53-58 kDa  |   |

## Anwendungen

### Geprüfte Anwendungen:

FC, IF, IHC, WB, ELISA

### Getestete Reaktivität:

Human, Maus, Ratte

**Hinweis-IHC: Antigendemaskierung mit TE-Puffer pH 9,0 empfohlen. (\*) Wahlweise kann die Antigendemaskierung auch mit Citratpuffer pH 6,0 erfolgen.**

### Positivkontrollen:

WB : Jurkat-Zellen, HEK-293-Zellen, K-562-Zellen, NIH/3T3-Zellen

IHC : Maushodengewebe,

IF : U2OS-Zellen,

## Hintergrundinformationen

CCT6B, also named as CCT-zeta-2, TCP-1-zeta-like, CCT-zeta-like, Testis-specific Tcp20 and Testis-specific protein TSA303, belongs to the TCP-1 chaperonin family. CCT6B is a molecular chaperone which assists the folding of proteins upon ATP hydrolysis. It is known to play a role, in vitro, in the folding of actin and tubulin. CCT6B has 3 isoforms with the molecular mass of 53-58 kDa.

## Lagerung

### Lagerungsbedingungen:

Bei -20°C lagern. Nach dem Versand ein Jahr lang stabil

### Lagerungspuffer:

PBS mit 0.02% Natriumazid und 50% Glycerin pH 7.3.

Aliquotieren ist nicht notwendig bei -20°C Lagerung

\*\*\* 20ul-Größen enthalten 0.1% BSA

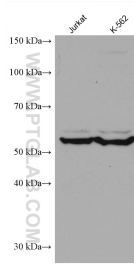
For technical support and original validation data for this product please contact:

T: 1 (888) 4PTGLAB (1-888-478-4522) (toll free in USA), or 1(312) 455-8498 (outside USA)

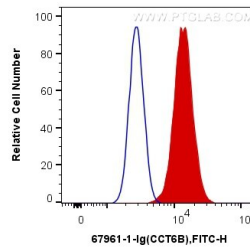
E: proteintech@ptglab.com  
W: ptglab.com

This product is exclusively available under Proteintech Group brand and is not available to purchase from any other manufacturer.

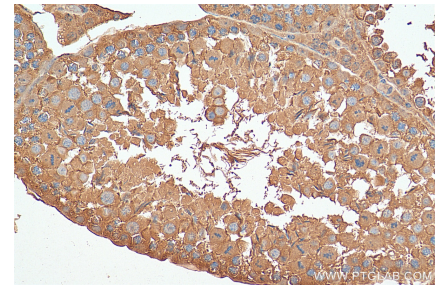
## Ausgewählte Validierungsdaten



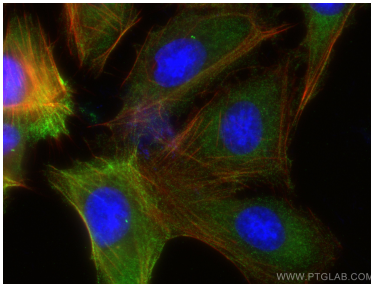
Various lysates were subjected to SDS PAGE followed by western blot with 67961-1-Ig (CCT6B antibody) at dilution of 1:5000 incubated at room temperature for 1.5 hours.



$1 \times 10^6$  U2OS cells were intracellularly stained with 0.4  $\mu$ g Anti-Human CCT6B (67961-1-Ig, Clone:2F11A9) and CoraLite®488-Conjugated AffiniPure Goat Anti-Mouse IgG(H+L) at dilution 1:1000 (red), or 0.4  $\mu$ g Control Antibody. Cells were fixed with 4% PFA and permeabilized with Flow Cytometry Perm Buffer (PF00011-C).



Immunohistochemical analysis of paraffin-embedded mouse testis tissue slide using 67961-1-Ig (CCT6B antibody) at dilution of 1:200 (under 40x lens). Heat mediated antigen retrieval with Tris-EDTA buffer (pH 9.0).



Immunofluorescent analysis of (-20°C Ethanol) fixed U2OS cells using CCT6B antibody (67961-1-Ig, Clone: 2F11A9) at dilution of 1:800 and CoraLite®488-Conjugated AffiniPure Goat Anti-Mouse IgG(H+L), CL594-Phalloidin (red).