

Nur für Forschungszwecke

MFSD2 Monoklonaler Antikörper

Katalog-Nr.:67965-1-Ig



Allgemeine Informationen

Katalog-Nr.: 67965-1-Ig	GenBank-Zugangsnummer: BC092414	Reinigungsmethode: Protein-A-Reinigung
Größe: 150ul , Konzentration: 1000 µg/ml von84879 Nanodrop;	GeneID (NCBI): 84879	CloneNo.: 2D2B4
Wirt: Maus	Vollständiger Name: major facilitator superfamily domain containing 2	Empfohlene Verdünnungen: WB 1:5000-1:50000 IF 1:200-1:800
Isotyp: IgG2a	Berechnete Masse: 543 aa, 60 kDa	
Immunogen Katalognummer: AG31028	Beobachtete Masse: 60 kDa	

Anwendungen

Geprüfte Anwendungen: IF, WB, ELISA	Positivkontrollen:
Getestete Reaktivität: Human, Maus	WB : humanes Plazenta-Gewebe, humanes Hodengewebe
	IF : Maushirngewebe,

Hintergrundinformationen

MFSD2, also named as MFSD2A, belongs to a large family of presumptive carbohydrate transporters with 10-12 membrane-spanning domains, is located at chromosomal position 1p34.2, and is conserved in evolution. It plays a role in thermogenesis via beta-adrenergic signaling pathway. It may be the main plasma membrane tunicamycin transporter. MFSD2 has three isoforms with MW 50 kDa and 59-60 kDa.

Lagerung

Lagerungsbedingungen:
Bei -20°C lagern. Nach dem Versand ein Jahr lang stabil

Lagerungspuffer:
PBS mit 0.02% Natriumazid und 50% Glycerin pH 7.3.

Aliquotieren ist nicht notwendig bei -20°C Lagerung

***** 20ul-Größen enthalten 0.1% BSA**

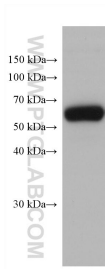
For technical support and original validation data for this product please contact:

T: 1 (888) 4PTGLAB (1-888-478-4522) (toll free in USA), or 1(312) 455-8498 (outside USA)

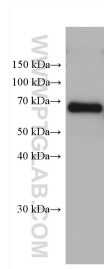
E: proteintech@ptglab.com
W: ptglab.com

This product is exclusively available under Proteintech Group brand and is not available to purchase from any other manufacturer.

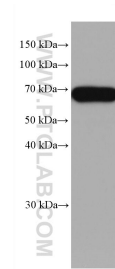
Ausgewählte Validierungsdaten



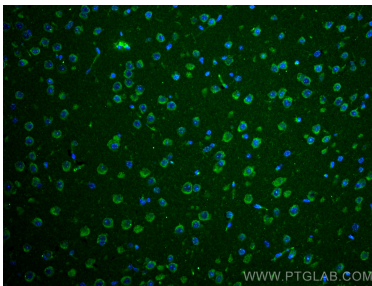
human testis tissue were subjected to SDS PAGE followed by western blot with 67965-1-Ig (MFSD2 antibody) at dilution of 1:10000 incubated at room temperature for 1.5 hours.



human placenta tissue were subjected to SDS PAGE followed by western blot with 67965-1-Ig (MFSD2 antibody) at dilution of 1:10000 incubated at room temperature for 1.5 hours.



human testis tissue were subjected to SDS PAGE followed by western blot with 67965-1-Ig (MFSD2 antibody) at dilution of 1:5200 incubated at room temperature for 1.5 hours.



Immunofluorescent analysis of (4% PFA) fixed mouse brain tissue using MFSD2 antibody (67965-1-Ig, Clone: 2D2B4) at dilution of 1:400 and CoraLite®488-Conjugated AffiniPure Goat Anti-Mouse IgG(H+L).