

Nur für Forschungszwecke

# ARHGEF16 Monoklonaler Antikörper

Katalog-Nr.:67975-1-Ig



## Allgemeine Informationen

<b>Katalog-Nr.:</b> 67975-1-Ig	<b>GenBank-Zugangsnummer:</b> BC002681	<b>Reinigungsmethode:</b> Protein-A-Reinigung
<b>Größe:</b> 150ul , Konzentration: 1000 µg/ml von27237	<b>GeneID (NCBI):</b> von27237	<b>CloneNo.:</b> 1D8E3
<b>Nanodrop;</b>	<b>Vollständiger Name:</b> Rho guanine exchange factor (GEF) 16	<b>Empfohlene Verdünnungen:</b> IF 1:400-1:1600
<b>Wirt:</b> Maus	<b>Berechnete Masse:</b> 80 kDa	
<b>Isotyp:</b> IgG2b	<b>Beobachtete Masse:</b> 80 kDa	
<b>Immunogen Katalognummer:</b> AG28675		

## Anwendungen

<b>Geprüfte Anwendungen:</b> IF, WB, ELISA	<b>Positivkontrollen:</b> WB : A549-Zellen, HEK-293-Zellen, HeLa-Zellen, HepG2-Zellen, MCF-7-Zellen
<b>Getestete Reaktivität:</b> Human	IF : MCF-7-Zellen,

## Hintergrundinformationen

Small GTPases of the Rho family are critical regulators of various cellular functions including actin cytoskeleton organization, activation of kinase cascades, mitogenesis, transcriptional activation and stimulation of DNA synthesis. Rho proteins cycle between a biologically active GTP-bound state and an inactive GDP-bound state. Rho guanine nucleotide exchange factor (GEF) has a crucial role in activating small GTPase by exchange GDP for GTP. ARGEF16 is one of the multiple GEF members. Although the specific function of this protein is not known yet, it is thought to be involved in protein-protein and protein-lipid interactions.

## Lagerung

**Lagerungsbedingungen:**  
Bei -20°C lagern.  
**Lagerungspuffer:**  
PBS mit 0.02% Natriumazid und 50% Glycerin pH 7.3.  
Aliquotieren ist nicht notwendig bei -20°C Lagerung

**\*\*\* 20ul-Größen enthalten 0.1% BSA**

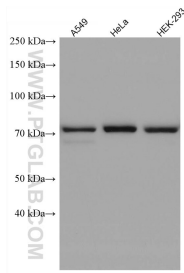
For technical support and original validation data for this product please contact:

T: 1 (888) 4PTGLAB (1-888-478-4522) (toll free in USA), or 1(312) 455-8498 (outside USA)

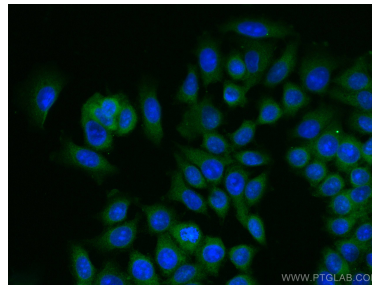
E: [proteintech@ptglab.com](mailto:proteintech@ptglab.com)  
W: [ptglab.com](http://ptglab.com)

**This product is exclusively available under Proteintech Group brand and is not available to purchase from any other manufacturer.**

## Ausgewählte Validierungsdaten



Various lysates were subjected to SDS PAGE followed by western blot with 67975-1-Ig (ARHGEF16 antibody) at dilution of 1:10000 incubated at room temperature for 1.5 hours.



Immunofluorescent analysis of (-20°C Methanol) fixed MCF-7 cells using ARHGEF16 antibody (67975-1-Ig, Clone: 1D8E3) at dilution of 1:800 and CoraLite®488-Conjugated AffiniPure Goat Anti-Mouse IgG(H+L).